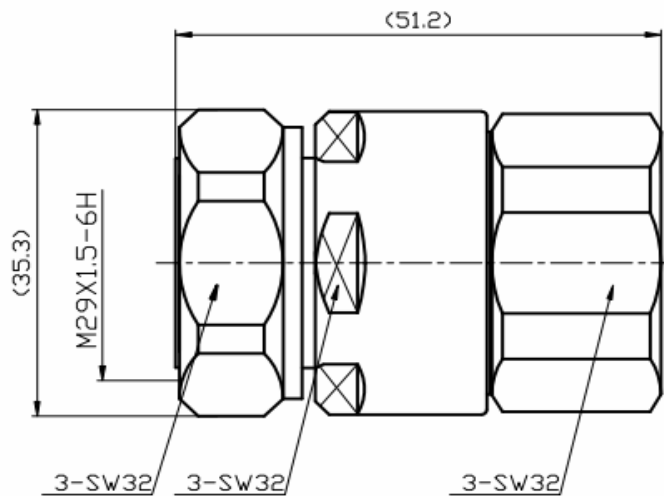


# Synergy Telecom P Ltd.

## 7/16 DIN Female Connector for 7/8" Super Flex Cable



### Interface

According to

IEC 60169-4

### Electrical

Characteristic Impedance  
 Frequency Range  
 VSWR  
 Insertion Loss  
 Dielectric Withstanding Voltage  
 Dielectric Resistance  
 Contact Resistance

50 ohm  
 DC-7.5GHz  
 $\leq 1.10 @ DC-3000MHz$   
 $\leq 0.08dB @ 2200MHz$   
 $\geq 4000V$  RMS, 50Hz, at sea level  
 $\geq 10000M\Omega$   
 Center Contact  $\leq 0.4m\Omega$   
 Outer Contact  $\leq 1 m\Omega$

### Mechanical

Durability

Mating cycles  $\geq 500$

### Material and plating

	Material	Plating
Body	Brass	Tri-metal
Insulator	PTFE	-
Center conductor	Phosphor bronze	Ag
Coupling Nut	Brass	Ni
Other Parts	Brass	Ni
Gasket	Silicone Rubber	-

### Environmental

Temperature Range  
 Weatherproof Rate  
 RoHs (2002/95/EC)

-40°C ~ +85°C  
 IP 67  
 Compliant