



**GPS+GSM Combination Antennas**



Model: STA-0822GPS28A

Name: GPS+GSM Combination Antenna



Model: STA-0822GPS28B

Name: GPS+GSM Combination Antenna



Model: STA-0822GPS28C

Name: GPS+GSM Combination Antenna

Model	STA-0822GPS28A		STA-0822GPS28B		STA-0822GPS28C	
<b>Electrical specifications</b>						
Frequency range-MHz	1575.42±5	824-960/1710-2170	1575.42±5	824-960/1710-2170	1575.42±5	824-960/1710-2170
VSWR	≤2.0	≤2.0	≤2.0	≤2.0	≤2.0	≤2.0
Gain-dBi	2	2	2	2	2	2
LNA Gain -dBi	28	/	28	/	28	/
Noise Figure-dB	<1.5	/	<1.5	/	<1.5	/
Polarization	RHCP	Vertical	RHCP	Vertical	RHCP	Vertical
Impedance-Ω	50	50	50	50	50	50
DC Voltage-V	3-5	/	3-5	/	3-5	/

<b>Mechanical specifications</b>						
Cable Length -m	3 or customized		3 or customized		3 or customized	
Connector	Fakra or customized		Fakra or customized		Fakra or customized	
Dimension -mm	Φ80×14		60×51×15.5		Φ46×15	
Net Weight-g	142		150		160	
Mounting Way	Magnet		Magnet		Screw	
Waterproof	IP67		IP67		IP67	

Description: Apply to car navigation, logistics positioning and so on.

**GPS Active Navigation Antennas**



Model:STA-GPS28A-1.5  
Name:GPS Antenna



Model:STA-GPS28B-3  
Name:GPS Antenna



Model :STA-GPS28C-3  
Name:GPS Antenna

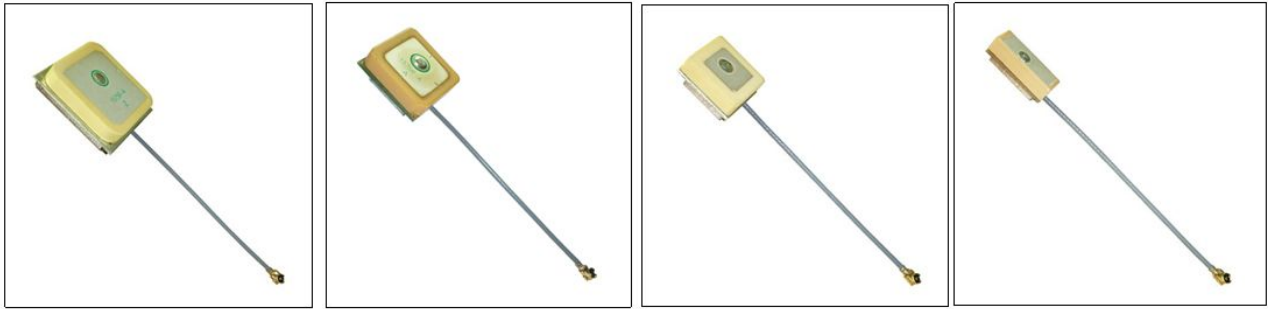


Model :STA-GPS40D-0.5  
Name: Marine GPS Antenna

Model	STA-GPS28A-1.5	STA-GPS28B-3	STA-GPS28C-3	STA-GPS40D-0.5
<b>Electrical specifications</b>				
Frequency range-MHz	1575.42±5	1575.42±5	1575.42±5	1575.42±5
VSWR	≤2.0	≤2.0	≤2.0	≤2.0
LNA Gain -dBi	28	28	28	40
Noise Figure-dB	<1.5	<1.5	<1.5	<1.5
Polarization	RHCP	RHCP	RHCP	RHCP
Impedance-Ω	50	50	50	50
DC Voltage -V	3-5	3-5	3-5	3-5
<b>Mechanical specifications</b>				
Cable Length -m	1.5 or customized	3 or customized	3 or customized	0.5 or customized
Connector	SMA-J or customized	SMA-J or customized	Fakra or customized	BNC or customized
Dimension-mm	46×38×13	50×37×17	Φ46×15	Φ95×130
Net Weight-g	75	77	77	200
Mounting Way	Magnet or Adhesive	Magnet or Adhesive	Screw	Pole
Operation Temperature-°C	-40~+60	-40~+60	-40~+60	-40~+60
Waterproof	IP67	IP67	IP67	IP67
Description: Apply to car navigation, logistics positioning, sea navigation and so on.				



**Internal GPS Antennas**



Model: STA-IGPS28A-60

Model: STA-IGPS18B-30

Model: STA-IGPS18C-60

Model: STA-IGPS18D-60

Name: Internal GPS Antenna

Name: Internal GPS Antenna

Name: Internal GPS Antenna

Name: Internal GPS Antenna

Model	STA-IGPS28A-60	STA-IGPS18B-30	STA-IGPS18C-60	STA-IGPS18D-60
<b>Electrical specifications</b>				
Frequency Range -MHz	1575.42	1575.42	1575.42	1575.42
VSWR	≤2.0	≤2.0	≤2.0	≤2.0
Bandwidth-MHz	±2	±2	±2	±2
LNA Gain -dBi	28	18	18	18
Noise Figure -dB	<1.5	<1.5	<1.5	<1.5
Polarization	RHCP	RHCP	RHCP	RHCP
Impedance -Ω	50	50	50	50
DC Voltage -V	3-5	3-5	3-5	3-5
<b>Mechanical specifications</b>				
Cable Length -mm	60 or customized	30 or customized	60 or customized	60 or customized
Connector	IPEX or customized	IPEX or customized	IPEX or customized	IPEX or customized
Dimension -mm	25×25×7.5	18×18×6.5	15×15×6.5	6×15×4.5
Net Weight -g	21	8	7	3.5
Operation Temperature-°C	-40~+60	-40~+60	-40~+60	-40~+60
Mounting Way	embedded	embedded	embedded	embedded
Description: Embedded internal type, applied to car navigation, logistics positioning and so on.				



**DVB-T Passive Antennas**



Model: STA-0208DTF  
Name: DVB-T Antenna



Model: STA-0208DTE  
Name: ATSC Antenna



Model: STA-0208DTD  
Name: DVB-T Antenna



Model: STA-0208DTB  
Name: DVB-T Antenna

Model	STA-0208DTF	STA-0208DTE	STA-0208DTD	STA-0208DTB
<b>Electrical specifications</b>				
Frequency Range -MHz	174-230/470-860	174-230/470-860	174-230/470-860	174-230/470-860
VSWR	≤2.0	≤2.0	≤2.0	≤2.0
Gain-dBi	3.0	3.0	2.0	5.0
Polarization	Vertical	Vertical	Vertical	Vertical
Impedance-Ω	75	75	75	75
Max.Power-W	50	50	50	50
<b>Mechanical specifications</b>				
Connector	IEC-J or customized	MCX-J or customized	SMA-J or customized	SMA-J or customized
Cable Length-m	3 or customized	1.5 or customized	1.5 or customized	1.5 or customized
Dimension-mm	Φ60×400	Φ43×(Extension365) (Truncated120)	Φ29×112	Φ63×129
Net Weight-g	170	41	50	190
Mounting Way	Screw	Magnetic	Magnet	Magnet
Operation Temperature-°C	-40~+60	-40~+60	-40~+60	-40~+60
Humidity-%	5~95	5~95	5~95	5~95
Description: Apply to mobile TV terminals.				

**DVB-T Passive Antennas**



Model: STA-0208DTF  
Name: DVB-T Antenna



Model: STA-0208DTE  
Name: ATSC Antenna



Model: STA-0208DTD  
Name: DVB-T Antenna



Model: STA-0208DTB  
Name: DVB-T Antenna

Model	STA-0208DTF	STA-0208DTE	STA-0208DTD	STA-0208DTB
<b>Electrical specifications</b>				
Frequency Range -MHz	174-230/470-860	174-230/470-860	174-230/470-860	174-230/470-860
VSWR	≤2.0	≤2.0	≤2.0	≤2.0
Gain-dBi	3.0	3.0	2.0	5.0
Polarization	Vertical	Vertical	Vertical	Vertical
Impedance-Ω	75	75	75	75
Max.Power-W	50	50	50	50
<b>Mechanical specifications</b>				
Connector	IEC-J or customized	MCX-J or customized	SMA-J or customized	SMA-J or customized
Cable Length-m	3 or customized	1.5 or customized	1.5 or customized	1.5 or customized
Dimension-mm	Φ60×400	Φ43×(Extension365) (Truncated120)	Φ29×112	Φ63×129
Net Weight-g	170	41	50	190
Mounting Way	Screw	Magnetic	Magnet	Magnet
Operation Temperature-°C	-40~+60	-40~+60	-40~+60	-40~+60
Humidity-%	5~95	5~95	5~95	5~95
Description: Apply to mobile TV terminals.				

**DVB-T Active Antennas**



Model: STA-0208ATB18  
Name: DVB-T Active Antenna



Model: STA-0208ATC18  
Name: DVB-T Active Antenna



Model: STA-0208ATA18  
Name: DVB-T Active Antenna

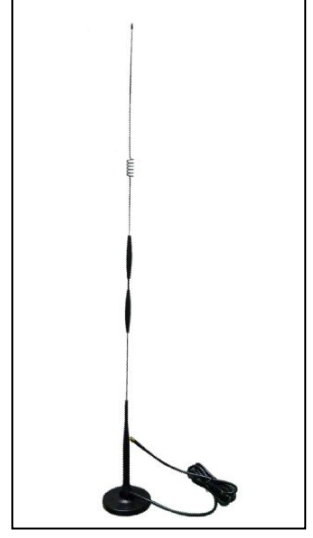
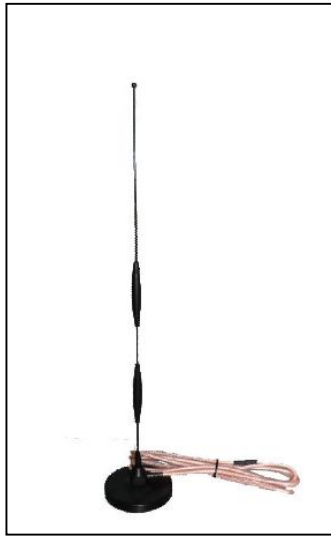
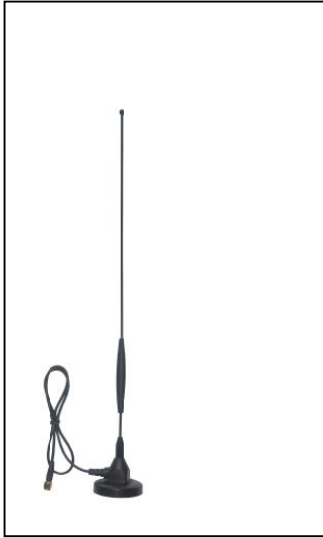


Model: STA-0208ATA18A  
Name: DVB-T Active Antenna

Model	STA-0208ATB18	STA-0208ATC18	STA-0208ATA18	STA-0208ATA18A
<b>Electrical specifications</b>				
Frequency Range -MHz	174-230/470-860	174-230/470-860	174-230/470-860	174-230/470-860
VSWR	≤2.0	≤2.0	≤2.0	≤2.0
LNA Gain -dBi	18	18	18	18
Polarization	Vertical	Vertical	Vertical	Vertical
Impedance-Ω	75	75	75	75
DC Voltage -V	3-5	3-5	3-5	3-5
Max. Power-W	50	50	50	50
<b>Mechanical specifications</b>				
Connector	IEC-J or customized	F-J or customized	F-J or customized	DC 3.5
Cable Length-m	5 or customized	3 or customized	3 or customized	5 or customized
Dimension-mm	Φ50×132	35×219	21×9×200	21×9×200
Net Weight-g	184	72	54	91
Radome material	Plastic	Plastic	Plastic	Plastic
Mounting Way	Magnet	3M Adhesive	3M Adhesive	3M Adhesive
Operation Temperature-°C	-40~+60	-40~+60	-40~+60	-40~+60
Humidity-%	5~95	5~95	5~95	5~95
Description: Apply to mobile TV terminals.				



**Car Antennas**



Model: STA-0918MSA-3

Model : STA-0918MSB5A-1.5

Model : STA-0918MSB5-3

Model: STA-0918MSB7-3

Name: GSM Vehicle Antenna

Name: GSM Vehicle Antenna

Name: GSM Vehicle Antenna

Name: GSM Vehicle Antenna

Model	STA-0918MSA-3	STA-0918MSB5A-1.5	STA-0918MSB5-3	STA-0918MSB7-3
<b>Electrical specifications</b>				
Frequency Range -MHz	890-960/1710-1990	890-960/1710-1990	890-960/1710-1990	890-960/1710-1990
VSWR	≤2.0	≤2.0	≤2.0	≤2.0
Gain-dBi	3.0	5.0	5.0	7.0
Polarization	Vertical	Vertical	Vertical	Vertical
Impedance-Ω	50	50	50	50
Max. Power-W	50	50	50	50
<b>Mechanical specifications</b>				
Connector	SMA-J or customized	SMA-J or customized	SMA-J or customized	SMA-J or customized
Cable Length-m	3or customized	1.5or customized	3or customized	3or customized
Dimension-mm	Φ48×385	Φ84×475	Φ84×720	Φ84×810
Net Weight-g	120	395	397	400
Radome Material	-40~+60	-40~+60	-40~+60	-40~+60
Operation Temperature-°C	Magnet	Magnet	Magnet	Magnet

Description: Apply to CDMA800/GSM network terminals and car mobile terminals.



**GSM Car Antennas**



Model : STA-0918SA-3  
Name: GSM Vehicle Antenna



Model : STA-0918SB-3  
Name: GSM Vehicle Antenna



Model : STA-0918SC-3  
Name: GSM Vehicle Antenna



Model : STA-0918SD5-3  
Name: GSM Vehicle Antenna

Model	STA-0918SA-3	STA-0918SB-3	STA-0918SC-3	STA-0918SD5-3
<b>Electrical specifications</b>				
Frequency Range -MHz	824-960/1710-1990	824-960/1710-1990	824-960/1710-1990	824-960/1710-1990
VSWR	≤2.0	≤2.0	≤2.0	≤2.0
Gain-dBi	2.0	2.0	2.0	5.0
Polarization	Vertical	Vertical	Vertical	Vertical
Impedance-Ω	50	50	50	50
Max. Power-W	50	50	50	50
<b>Mechanical specifications</b>				
Connector	SMA-J or customized	SMA-J or customized	SMA-J or customized	SMA-J or customized
Cable Length-m	3 or customized	3 or customized	3 or customized	3 or customized
Dimension-mm	Φ29×200	Φ42×290	Φ45×290	Φ48×470
Net Weight-g	38	45	45	130
Radome Material	-40~+60	-40~+60	-40~+60	-40~+60
Operation Temperature-°C	Magnet	Magnet	Magnet	Magnet
Description: Apply to CDMA800/GSM network terminals and car mobile terminals.				



**Terminal Antennas**



Model: STA-0918TEA  
Name: GSM Antenna



Model: STA-0918TEB  
Name: GSM Antenna



Model: STA-0819TEC  
Name: GSM Antenna



Model: STA-0918TED  
Name: GSM Antenna

Model	STA-0918TEA	STA-0918TEB	STA-0819TEC	STA-0918TED
<b>Electrical specifications</b>				
Frequency Range -MHz	890-960/1710-1880	890-960/1710-1880	824-960/1710-1990	890-960/1710-1880
VSWR	≤2.0	≤2.0	≤2.0	≤2.0
Gain-dBi	2.0	2.0	2.0	2.0
Polarization	Vertical	Vertical	Vertical	Vertical
Impedance-Ω	50	50	50	50
Max. Power-W	50	50	50	50
<b>Mechanical specifications</b>				
Connector	SMA-JW	SMA-JW	SMA-JW	SMA-JW
Dimension-mm	Φ10.5×51	Φ8×59	Φ10.5×115	Φ10.5×108
Net Weight-g	9	7	18	12
Radome material	Plastic	Plastic	Plastic	Plastic
Operation Temperature-°C	-40~+60	-40~+60	-40~+60	-40~+60
Humidity-%	5~95	5~95	5~95	5~95
Description: Apply to GSM900/GSM1800 terminal equipment and GPRS wireless transmission.				



**Terminal Antenna**



Model: STA-0918TEF  
Name:: GSM Antenna



Model: STA-0918TEG  
Name:: GSM Antenna



Model: STA-0918TEH  
Name:: GSM Antenna



Model: STA-0918TEG  
Name:: GSM Antenna

Model	STA-0918TEF	STA-0918TEG	STA-0819TEH	STA-0918TEG
<b>Electrical specifications</b>				
Frequency Range -MHz	890-960/1710-1880	890-960/1710-1880	824-960/1710-1990	890-960/1710-1880
VSWR	≤2.0	≤2.0	≤2.0	≤2.0
Gain-dBi	2.0	2.0	2.0	2.0
Polarization	Vertical	Vertical	Vertical	Vertical
Impedance-Ω	50	50	50	50
Max. Power-W	50	50	50	50
<b>Mechanical specifications</b>				
Connector	SMA-J	SMA-J	SMA-J	SMA-JW
Dimension-mm	Φ10.5×51	Φ8×51	Φ10.5×76	Φ10.5×51
Net Weight-g	9	7	18	12
Radome material	Plastic	Plastic	Plastic	Plastic
Operation Temperature-°C	-40~+60	-40~+60	-40~+60	-40~+60
Humidity-%	5~95	5~95	5~95	5~95
Description: Apply to GSM900/GSM1800 terminal equipment and GPRS wireless transmission.				

**Terminal Antennas**



Model: STA-0819TMA  
Name: GSM Antenna



Model: STA-0819TMB  
Name: GSM Antenna



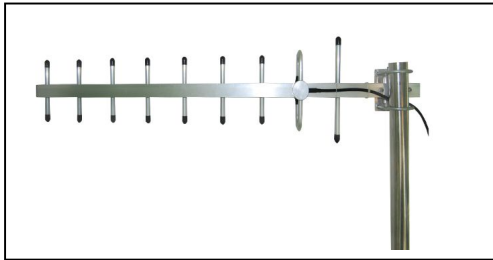
Model: STA-2100TMC  
Name: 3GHz Antenna



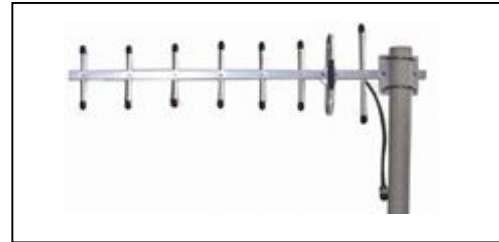
Model: STA-0922TMD  
Name: 3GHz Antenna

Model	STA-0819TMA	STA-0819TMB	STA-2100TMC	STA-0922TMD
<b>Electrical specifications</b>				
Frequency Range -MHz	824-960/1710-1990	824-960/1710-1990	2100-2170	890-960/1710-2170
VSWR	≤2.0	≤2.0	≤2.0	≤2.0
Gain-dBi	2.0	5/4	2.0	2/3
Polarization	Vertical	Vertical	Vertical	Vertical
Impedance-Ω	50	50	50	50
Max. Power-W	50	50	50	50
<b>Mechanical specifications</b>				
Connector	SMA-J or customized	SMA-J or customized	SMA-J or customized	N-K
Dimension-mm	Φ29.5×89	Φ29.5×89	Φ30×81	Φ20×185
Net Weight-g	60	92	66	120
Radome Material	Plastic	Plastic	Plastic	Plastic
Operation Temperature-°C	-40~+60	-40~+60	-40~+60	-40~+60
Mounting Way	Screw	Screw	Screw	Wall Mounting
Humidity-%	5~95	5~95	5~95	5~95
Description: Apply to GSM900/GSM1800 terminal equipment and GPRS wireless transmission.				

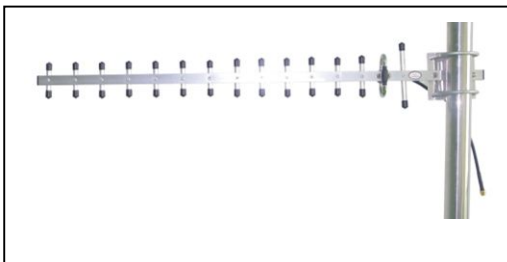
**Terminal Yagi Antennas**



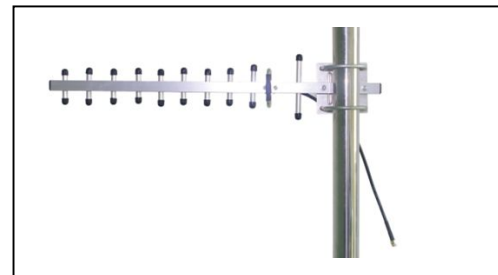
Model: STA-800YA9  
Name: 800M Yagi Antenna



Model: STA-900YA8  
Name: 900M Yagi Antenna



Model: STA-1800YA15  
Name: 1800M Yagi Antenna



Model: STA-2100YA11  
Name: 2100M Yagi Antenna

Model	STA-800YA9	STA-900YA8	STA-1800YA15	STA-2100YA11
<b>Electrical specifications</b>				
Frequency Range -MHz	824-894	890-960	1710-1880	2100-2170
VSWR	≤1.5	≤1.5	≤1.5	≤1.5
Gain-dBi	10	10	15	12
Polarization	Vertical	Vertical	Vertical	Vertical
Impedance-Ω	50	50	50	50
Max. Power-W	100	100	100	100
<b>Mechanical specifications</b>				
Connector	TNC or customized	N-K or customized	SMA or customized	SMA or customized
Cable Length-m	0.3 or customized	0.3 or customized	0.3 or customized	0.3 or customized
Dimension-mm	890×190	795×190	710×105	650×95
Net Weight-g	380	360	332	270
Operation Temperature-°C	-40~+60	-40~+60	-40~+60	-40~+60
Mounting Way	PoleΦ40-50	PoleΦ40-50	PoleΦ40-50	PoleΦ40-50
Description: Apply to GSM900/GSM1800 terminal equipment and GPRS wireless transmission.				



**Data Transmission and Security Antennas**



Model: STA-0918CPA-3  
Name: GSM Antenna

Model: STA-0919CPB-3  
Name: GSM Antenna

Model: STA-0919CPC-3  
Name: GSM Antenna

Model: STA-0919CPD-3  
Name: GSM Antenna

Model	STA-0918CPA-3	STA-0919CPB-3	STA-0919CPC-3	STA-0919CPD-3
<b>Electrical specifications</b>				
Frequency Range -MHz	890-960/1710-1880	890-960/1710-1990	890-960/1710-1990	890-960/1710-1990
VSWR	≤2.0	≤2.0	≤2.0	≤2.0
Gain-dBi	2.0	2.0	2.0	2.0
Polarization	Vertical	Vertical	Vertical	Vertical
Impedance-Ω	50	50	50	50
Max. Power-W	50	50	50	50
<b>Mechanical specifications</b>				
Connector	SMA-J or customized	SMA-J or customized	SMA-J or customized	SMA-J or customized
Cable Length-m	3 or customized	3 or customized	3 or customized	3 or customized
Dimension-mm	99×17.5×9	106×8.6×11.5	115.5×21.5×5.5	123×21.6×6
Net Wight-g	51	20	55	58
Radome Material	Plastic	Plastic	Plastic	Plastic
Operation Temperature-°C	-40~+60	-40~+60	-40~+60	-40~+60
Mounting Way	3M Adhesive	3M Adhesive	3M Adhesive	3M Adhesive
Description: Compact structure and nice design, patched by 3M Glues, which is applied to car security and WAMR.				



# SYNERGY TELECOM PVT LTD

## LPDA Antennas & Decorative Antennas



Model: STA-0825LA  
Name: LPDA Antenna

Model: STA-0825LB  
Name: LPDA Antenna

Model: STA-0825WA  
Name: Wall Mount Antenna

Model: STA-0825CD  
Name: Ceiling Mount Antenna

Model	STA-0825LA	STA-0825LB	STA-0825WA	STA-0825CD
<b>Electrical specifications</b>				
Frequency Range -MHz	806-960/1710-2500	806-960/1710-2500	806-960/1710-2500	806-960/1710-2500
VSWR	≤1.5	≤1.5	≤1.5	≤1.5
Gain-dBi	7/9	10/11	7/10	3/5
Vertical Beamwidth-°	50/40	60/55	55/45	120/120
Horizontal Beamwidth -°	65/50	90/70	70/60	360/120
F/B Ratio-dB	≥18	≥19	----	----
Polarization	Vertical	Vertical	Vertical	Vertical
Impedance-Ω	50	50	50	50
Max. Power-W	100	100	50	50
Lightning Protection	DC Ground	DC Ground	DC Ground	DC Ground
<b>Mechanical specifications</b>				
Connector	N-K or customized	N-K or customized	N-K or customized	N-K or customized
Dimension-mm	295×210×64	400×265×65	210×180×47	Φ187×86×M18
Net Weight-g	723	1000	415	198
Mounting Mast Diameter -mm	Pole Φ40-50	Pole Φ40-50	Wall Mount	Ceiling Mount
Operation Temperature-°C	-40~+60	-40~+60	-40~+60	-40~+60

Description: Apply to base station, indoor coverage system and GSM/CDMA/PCS/3G/WLAN system.



**Indoor Distributed Antennas**



Model: STA-0825CA  
Name: Ceiling Antenna



Model: STA-0825CB  
Name: Ceiling Antenna



Model: STA-0825CC  
Name: Ceiling Antenna



Model: STA-0825CE  
Name: Ceiling Antenna

Model	STA-0825CA	STA-0825CB	STA-0825CC	STA-0825CE
<b>Electrical specifications</b>				
Frequency Range -MHz	806-960/1710-2500	806-960/1710-2500	806-960/1710-2500	806-960/1710-2500
VSWR	≤1.5	≤1.5	≤1.5	≤1.5
Gain-dBi	2/5	2/5	2/5	2/5
Vertical Beamwidth-°	55	120	55	55
Horizontal Beamwidth -°	/	65/50	/	/
Polarization	Vertical	Vertical	Vertical	Vertical
Impedance-Ω	50	50	50	50
Max. Power-W	50	50	50	50
Lightning protection	DC Ground	DC Ground	DC Ground	DC Ground
<b>Mechanical specifications</b>				
Connector	N-K or customized	N-K or customized	N-K or customized	N-K or customized
Dimension-mm	Φ166×90×M18	Φ170×70×M18	Φ123×72×M18	Φ167×74×M18
Net Weight-g	205	260	198	246
Mounting Way	Ceiling Mount	Ceiling Mount	Ceiling Mount	Ceiling Mount
Operation Temperature-°C	-40~+60	-40~+60	-40~+60	-40~+60
Description: Apply to indoor coverage system and GSM/CDMA/PCS/3G/WLAN system.				



**WLAN & WiFi Antennas**



Model: STA-2400MSC9A-1.5  
Name: 2.4G Magnetic Antenna



Model: STA-2400SE-3  
Name: 2.4G Magnetic Antenna



Model: STA-2400SF-3  
Name: 2.4G Magnetic Antenna



Model: STA-2400SG-3  
Name: 2.4G Magnetic Antenna

Model	STA-2400MSC9A-1.5	STA-2400SE-3	STA-2400SF-3	STA-2400SG-3
<b>Electrical specifications</b>				
Frequency Range -MHz	2400-2483	2400-2483	2400-2483	2400-2483
VSWR	≤2.0	≤2.0	≤2.0	≤2.0
Gain-dBi	9.0	9.0	9.0	7.0
Polarization	Vertical	Vertical	Vertical	Vertical
Impedance-Ω	50	50	50	50
Max. Power-W	50	50	50	50
<b>Mechanical specifications</b>				
Connector	RPSMA-J	RPSMA-J	RPSMA-J	RPSMA-J
Cable Length-m	1.5 or customized	3 or customized	3 or customized	3 or customized
Dimension-mm	114×69×430	Φ60×435	Φ61×420	Φ62×260
Net Weight-g	233	124	107	64
Radome Material	Plastic/ABS	Plastic/ABS	Plastic/ABS	Plastic/ABS
Operation Temperature-°C	-40~+60	-40~+60	-40~+60	-40~+60

Description: Apply to 2.4GHz WLAN/WiFi system and car mobile communication system, with hotspot covered.

**WLAN & WiFi Antennas**



Model: STA-2400TFB5  
Name: 2.4G Folded Antenna



Model: STA-2400TFC5  
Name: 2.4G Folded Antenna



Model: STA-2400TFD5  
Name: 2.4G Folded Antenna



Model: STA-2400TFE4  
Name: 2.4G Folded Antenna

Model	STA-2400TFB5	STA-2400TFC5	STA-2400TFD5	STA-2400TFE4
<b>Electrical specifications</b>				
Frequency Range -MHz	2400-2483	2400-2483	2400-2483	2400-2483
VSWR	≤2.0	≤2.0	≤2.0	≤2.0
Gain-dBi	5.0	5.0	5.0	4.0
Polarization	Vertical	Vertical	Vertical	Vertical
Impedance-Ω	50	50	50	50
Max. Power-W	50	50	50	50
<b>Mechanical specifications</b>				
Connector	RPSMA-J	RPSMA-J	RPSMA-J	RPSMA-J
Dimension -mm	Φ14×210	Φ13.5×186	Φ13×195	Φ8×170
Radome Material	Plastic	Plastic	Plastic	Plastic
Net Weight-g	33	17	21	13
Operation Temperature-°C	-40~+60	-40~+60	-40~+60	-40~+60
Humidity-%	5~95	5~95	5~95	5~95
Description: Apply to 2.4GHz WLAN/WiFi system.				

**WLAN & WiFi Antennas**



Model: STA-2400TFF  
Name: 2.4G Folded Antenna

Model: STA-2400TFG5  
Name: 2.4G Folded Antenna

Model: STA-2400TFH  
Name: 2.4G Folded Antenna

Model: STA-2400TFI7  
Name: 2.4G Folded Antenna

Model	STA-2400TFF	STA-2400TFG5	STA-2400TFH	STA-2400TFI7
<b>Electrical specifications</b>				
Frequency Range -MHz	2400-2483	2400-2483	2400-2483	2400-2483
VSWR	≤2.0	≤2.0	≤2.0	≤2.0
Gain-dBi	2.5	5.0	3.0	7.0
Polarization	Vertical	Vertical	Vertical	Vertical
Impedance-Ω	50	50	50	50
Max. Power-W	50	50	50	50
<b>Mechanical specifications</b>				
Connector	RPSMA-J	RPSMA-J	RPSMA-J	RPSMA-J
Dimension -mm	Φ10×110	Φ13×155	12.7×9.8×153	Φ13×255
Net Weight-g	8.5	18	14	30
Radome Material	Plastic	Plastic	Plastic	Plastic
Operation Temperature-℃	-40~+60	-40~+60	-40~+60	-40~+60
Description: Apply to 2.4GHz WLAN/WiFi system.				



**WLAN & WiFi Antennas**



Model: STA-2400TFJ7  
Name: 2.4GHz Antenna



Model: STA-2400TFA9  
Name: 2.4GHz Antenna



Model: STA-2400TFK10  
Name: 2.4GHz Antenna



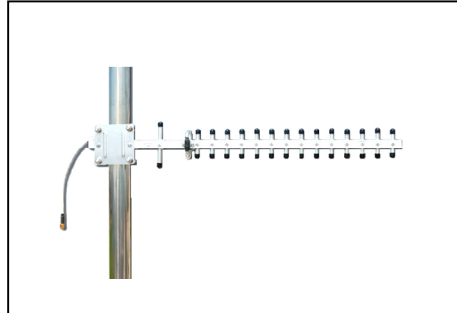
Model: STA-2400TFL9  
Name: 2.4GHz Antenna

Model	STA-2400TFJ7	STA-2400TFA9	STA-2400TFK10	STA-2400TFL9
<b>Electrical specifications</b>				
Frequency Range -MHz	2400-2483	2400-2483	2400-2483	2400-2483
VSWR	≤2.0	≤2.0	≤2.0	≤2.0
Gain-dBi	7.0	9.0	10.0	9.0
Polarization	Vertical	Vertical	Vertical	Vertical
Impedance-Ω	50	50	50	50
Max. Power-W	50	50	50	50
<b>Mechanical specifications</b>				
Connector	RPSMA-J	RPSMA-J	RPSMA-J	RPSMA-J
Dimension -mm	Φ13.5×275	Φ13.5×375	Φ13.5×395	Φ13.5×390
Net Weight-g	32	50	48	45
Radome Material	Plastic	Plastic	Plastic	Plastic
Operation Temperature-°C	-40~+60	-40~+60	-40~+60	-40~+60
Humidity-%	5~95	5~95	5~95	5~95
Description: Apply to 2.4GHz WLAN/WiFi system.				

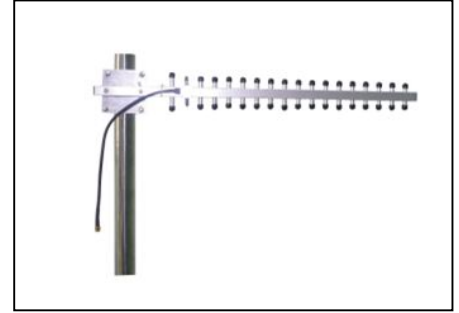
**WLAN & WiFi Antennas**



Model: STA-2400YB15  
Name: 2.4GHz Yagi Antenna



Model: STA-2400YA16  
Name: 2.4GHz Yagi Antenna



Model: STA-2400YA18  
Name: 2.4GHz Yagi Antenna

Model	STA-2400YB15	STA-2400YA16	STA-2400YA18
<b>Electrical specifications</b>			
Frequency Range -MHz	2400-2483	2400-2483	2400-2483
VSWR	≤2.0	≤2.0	≤2.0
Gain-dBi	15	16	18
Vertical Beamwidth-°	17	24	24
Horizontal Beamwidth -°	11	26	26
Front-to-Back Ratio -dB	≥25	≥30	≥32
Polarization	Vertical	Vertical	Vertical
Impedance-Ω	50	50	50
Max. Power-W	50	50	50
Lightning protection	DC Ground	DC Ground	DC Ground
<b>Mechanical specifications</b>			
Connector	RPSMA-J	RPSMA-J	RPSMA-J
Dimension-mm	Φ51×465	610×90	580×70
Net Weight-g	415	270	308
Mounting Mast Diameter -mm	Φ40~50	Φ40~50	Φ40~50
Description: Apply to 2.4GHz WLAN system and 2.4GHz ISM frequency with wireless bridge.			

**2.3~2.7GHz Wall Outdoor/Indoor antenna**



Model: STA-2327WE10  
Name: 2.3-2.7GHz Wall Antenna



Model: STA-2327WA12  
Name: 2.3-2.7GHz Wall Antenna



Model: STA-2327WA12A  
Name: 2.3-2.7GHz Wall Antenna

Model	STA-2327WE10	STA-2327WA12	STA-2327WA12A
<b>Electrical specifications</b>			
Frequency Range -MHz	2300~2700	2300~2700	2300~2700
Gain-dBi	14x2	14	13
Polarization	Vertical	Vertical	Vertical
VSWR	≤1.5	≤1.5	≤1.5
Horizontal Beamwidth -°	50	54	54
Vertical Beamwidth-°	45	32	32
Front-to-Back Ratio -dB	≥15	≥23	≥23
Impedance-Ω	50	50	50
Max. Power-W	50	50	50
<b>Mechanical specifications</b>			
Connector	N-K	N-K	N-K
Dimension-mm	140x120x38	210x180x45	210x180x45
Net Weight-g	0.35	0.5	0.4
Operation Temperature-°C	-40~+60	-40~+60	-40~+60
Description: Apply to 2.3~2.7GHz frequency WLAN /Wi-Fi system /ISM frequency, support IEEE802.11b/g; Wireless point-to-point, Wireless digital image transmission, Public hotspot.			

**2.4GHz Panel Antennas**



Model: STA-2400D90C14  
Name: 2.4GHz Panel Antenna



Model: STA-2400V90C14  
Name: 2.4GHz Panel Antenna



Model: STA-2400V120C13  
Name: 2.4GHz Panel Antenna

Model	STA-2400D90C14	STA-2400V90C14	STA-2400V120C13
<b>Electrical specifications</b>			
Frequency range -MHz	2400~2500	2400~2500	2400~2500
Gain-dBi	14x2	14	13
Polarization	±45°	Vertical	Vertical
VSWR	≤1.5	≤1.5	≤1.5
Horizontal Beamwidth -°	90	90	120
Vertical Beamwidth-°	15	15	15
Front-to-Back Ratio -dBi	≥25	≥25	≥23
Impedance-Ω	50	50	50
Max. Power-W	200	200	200
<b>Mechanical specifications</b>			
Connector	N-K	N-K	N-K
Dimension-mm	490x128x56	490x128x56	490x128x56
Net Weight-g	1.6	1.4	1.4
Operation Temperature-°C	-40~+60	-40~+60	-40~+60
Description : Apply in 2.4GHz frequency WLAN /Wi-Fi system /ISM frequency , Support IEEE802.11b/g; Sector coverage, Long-distance point-to-point and point-to-multipoint wireless bridge .			



**2.4GHz Flat Panel Antennas**



Model: STA-2400PG12

Model: STA-2400PB14

Model: STA-2400PF18

Model: STA-2400EPF18

Name: 2.4GHz Panel Antenna

Name: 2.4GHz Panel Antenna

Name: 2.4GHz Panel Antenna

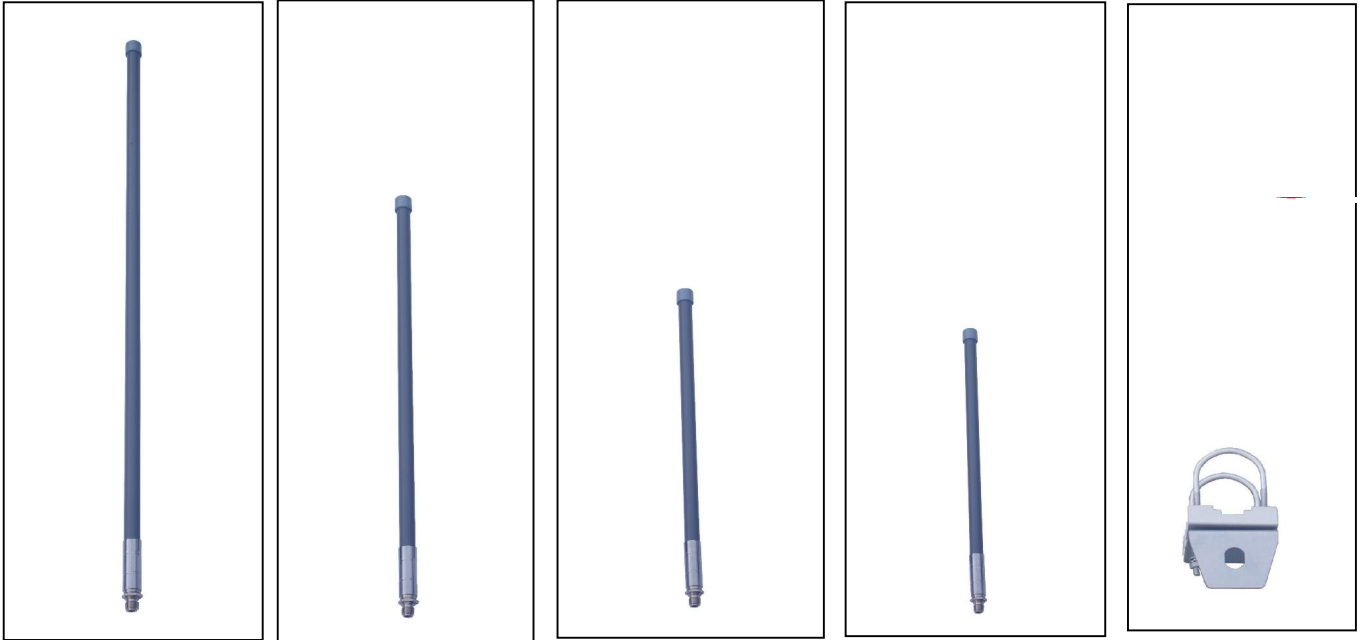
Name: 2.4GHz Panel Antenna

Model	STA-2400PG12	STA-2400PB14	STA-2400PF18	STA-2400EPF18
<b>Electrical specifications</b>				
Frequency Range-MHz	2400~2483	2400~2483	2400~2483	2400~2483
Gain-dBi	12	14	18	18
Polarization	Vertical	Vertical	Vertical	Vertical
VSWR	≤1.5	≤1.5	≤1.5	≤1.5
Vertical Beamwidth-°	54	32	20	20
Horizontal Beamwidth -°	32	30	20	20
Front-to-Back Ratio -dB	≥25	≥25	≥25	≥25
Impedance-Ω	50	50	50	50
Max. Power-W	50	50	50	50
<b>Mechanical specifications</b>				
Connector	N-K	N-K	N-K	N-K
Dimension-mm	190×190×30	234×194×35	305×305×25	305×305×25
Net Weight-g	0.55	0.75	1.4	2.6
Operation Temperature-°C	-40~+60	-40~+60	-40~+60	-40~+60
Description: For 2.4GHz frequency WLAN /Wi-Fi system /ISM frequency, support IEEE802.11b/g; Wide range of applications, Wireless digital image transmission, Public hotspot, point-to-point and point-to-multipoint wireless bridge.				



# SYNERGY TELECOM PVT LTD

## 2.4GHz Fiberglass Omni-directional Antennas (A series)



Model: STA-2400FA12  
Name: 2.4GHz Antenna

Model: STA-2400FA10  
Name: 2.4GHz Antenna

Model: STA-2400FA8  
Name: 2.4GHz Antenna

Model: STA-2400FA6  
Name: 2.4GHz Antenna

Model: STA-LC  
Name: U Clamp

Model	STA-2400FA12	STA-2400FA10	STA-2400FA8	STA-2400FA6
<b>Electrical specifications</b>				
Frequency range-MHz	2400~2483	2400~2483	2400~2483	2400~2483
Gain-dBi	12	10	8	6
Polarization	Vertical	Vertical	Vertical	Vertical
VSWR	≤1.5	≤1.5	≤1.5	≤1.5
Vertical Beam width-°	7	10	16	25
Horizontal Beam width -°	360	360	360	360
Impedance-Ω	50	50	50	50
Max. Power-W	100	100	100	100
<b>Mechanical specifications</b>				
Connector	N-K	N-K	N-K	N-K
Dimension-mm	Φ21×1200	Φ21×1000	Φ21×550	Φ21×400
Net Weight-kg	1.2	1.0	0.5	0.4
Operation Temperature-°C	-40~+60	-40~+60	-40~+60	-40~+60
Description: For 2.4GHz frequency WLAN /Wi-Fi system /ISM frequency, support IEEE802.11b/g; Wide range of applications, Wireless digital image transmission, Public hotspot, point-to-point and point-to-multipoint wireless bridge.				



**2.4GHz Grid Parabolic Antennas**



Model: STA-2400GP19

Name: 2.4GHz Grid Parabolic Antenna



Model: STA-2400GP24

Name: 2.4GHz Grid Parabolic Antenna



Model: STA-2400GP27

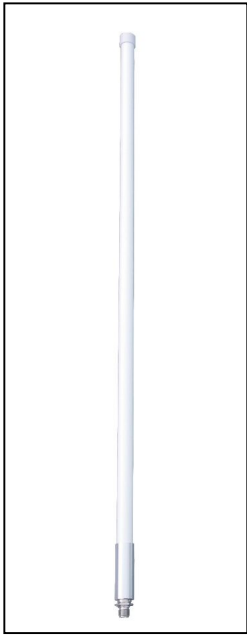
Name: 2.4GHz Grid Parabolic Antenna

Model	STA-2400GP19	STA-2400GP24	STA-2400GP27
<b>Electrical specifications</b>			
Frequency Range -MHz	2400~2483	2400~2483	2400~2483
Gain-dBi	19	24	27
Polarization	Vertical or horizontal	Vertical or horizontal	Vertical or horizontal
VSWR	≤1.5	≤1.5	≤1.5
Horizontal Beamwidth -°	12	10	6.5
Vertical Beamwidth-°	16	14	6.5
Front-to-Back Ratio -dB	≥20	≥25	≥32
Impedance-Ω	50	50	50
Max. Power-W	100	100	100
<b>Mechanical specifications</b>			
Connector	N -K	N -K	N -K
Dimension-mm	600×400	900×600	Φ1200
Net Weight-kg	2.4	3.7	20
Operation Temperature-°C	-40~+60	-40~+60	-40~+60
Description: For 2.4GHz frequency WLAN /Wi-Fi system /ISM frequency , Support IEEE802.11b/g ; High gain, good effect, Wireless digital image transmission, point-to-point wireless bridge.			

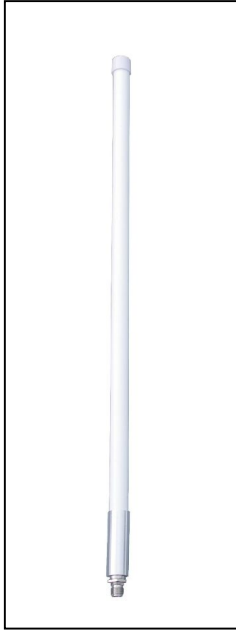


# SYNERGY TELECOM PVT LTD

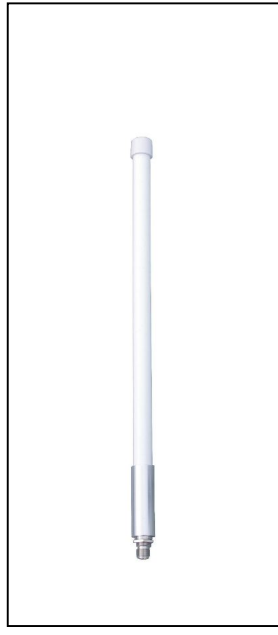
## 3GHz Fiberglass Omni-directional Antennas (C series)



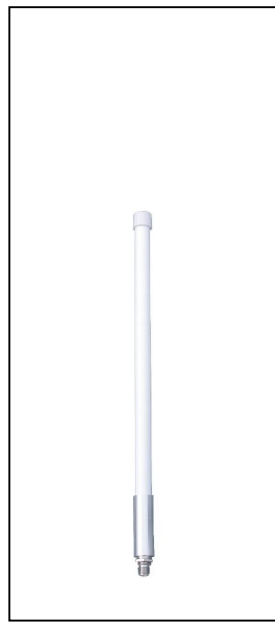
Model: STA-1921FC11  
Name: 3GHz Antenna



Model: STA-1921FC10  
Name: 3GHz Antenna



Model: STA-1921FC8  
Name: 3GHz Antenna



Model: STA-1921FC6  
Name: 3GHz Antenna



Model: STA-LC  
Name: U Clamp

Model	STA-1921FC11	STA-1921FC10	STA-1921FC8	STA-1921FC6
<b>Electrical specifications</b>				
Frequency Range -MHz	1880~2025	1880~2025	1880~2025	1880~2025
Gain-dBi	11	10	8	6
Polarization	Vertical	Vertical	Vertical	Vertical
VSWR	≤1.5	≤1.5	≤1.5	≤1.5
Vertical Beamwidth-°	9	10	16	24
Horizontal Beamwidth-°	360	360	360	360
Impedance-Ω	50	50	50	50
Max. Power-W	100	100	100	100
<b>Mechanical specifications</b>				
Connector	N-K	N-K	N-K	N-K
Dimension-mm	Φ27×1280	Φ27×1065	Φ27×850	Φ27×530
Net Weight-kg	0.8	0.68	0.56	0.40
Operation Temperature-°C	-40~+60	-40~+60	-40~+60	-40~+60
Description: Apply in 3GHz TD-SCDMA network; good radiation, Omni-directional coverage.				

**3.5GHz Panel Antennas**



Model: STA-3338D90C17  
Name: 3.5GHz Panel Antenna



Model: STA-3338V90C17  
Name: 3.5GHz Panel Antenna



Model: STA-3338V120C16  
Name: 3.5GHz Panel Antenna

Model	STA-3338D90C17	STA-3338V90C17	STA-3338V120C16
<b>Electrical specifications</b>			
Frequency Range -MHz	3300~3800	3300~3800	3300~3800
Gain-dBi	17x2	17	16
Polarization	±45°	Vertical	Vertical
VSWR	≤1.5	≤1.5	≤1.5
Vertical Beamwidth-°	7	7	7
Horizontal Beamwidth-°	90	90	120
Front-to-Back Ratio -dB	≥28	≥28	≥25
Impedance-Ω	50	50	50
Max. Power-W	200	200	200
<b>Mechanical specifications</b>			
Connector	N-K	N-K	N-K
Dimension-mm	800x128x56	800x128x56	800x128x56
Net Weight-kg	2.8	2.6	2.6
Operation Temperature-°C	-40~+60	-40~+60	-40~+60
Description: 3.5GHz WiMAX system; high gain, Sector coverage, Applicable to wireless access systems, Multipoint wireless bridge.			



**3.5GHz Flat Panel Antennas**



Model: STA-3338PG15

Model: STA-3338PB16

Model: STA-3338PD18

Model: STA-3500EPF18

Name: 3.5G z Panel Antenna

Name: 3.5GHz Panel Antenna

Name: 3.5GHz Panel Antenna

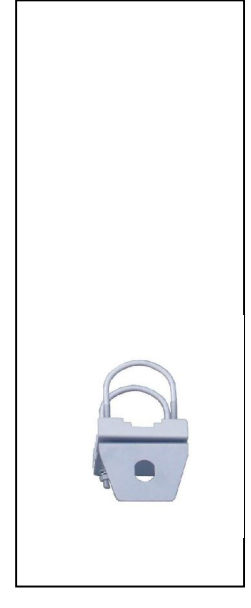
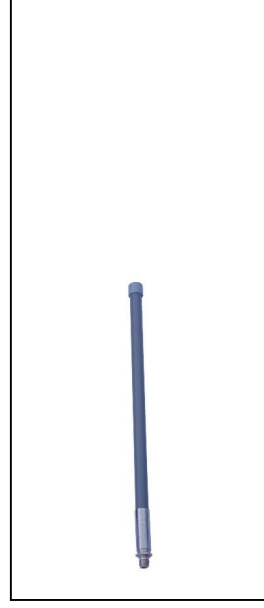
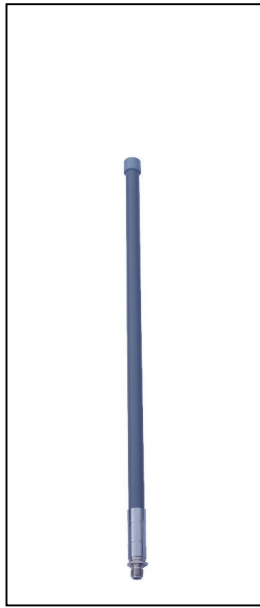
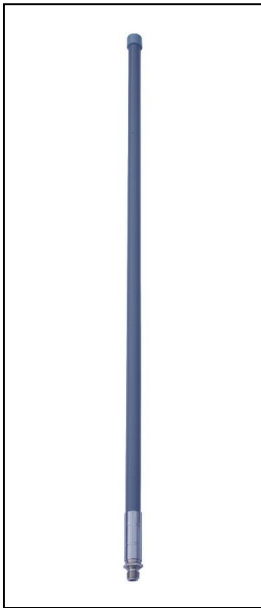
Name: 3.5GHz Panel Antenna

Model	STA-3338PG15	STA-3338PB16	STA-3338PD18	STA-3500EPF18
<b>Electrical specifications</b>				
Frequency Range -MHz	3300~3800	3300~3800	3300~3800	3400~3600
Gain-dBi	15	16	18	18
Polarization	Vertical or Horizontal	Vertical or Horizontal	Vertical or Horizontal	Vertical or Horizontal
VSWR	≤1.5	≤1.5	≤1.5	≤1.5
Vertical Beamwidth-°	30	30	17	17
Horizontal Beamwidth-°	30	24	17	17
Front-to-Back Ratio -dB	≥25	≥25	≥25	≥25
Impedance-Ω	50	50	50	50
Max. Power-W	50	50	50	50
<b>Mechanical specifications</b>				
Connector	N-K	N-K	N-K	N-K
Dimension-mm	190×190×30	234×194×35	261×261×35	305×305×25
Net Weight-kg	0.55	0.75	1.4	2.5
Operation Temperature-°C	-40~+60	-40~+60	-40~+60	-40~+60
Description: For 3.5GHz WiMAX, system; small size, low profile, for small area coverage, Applicable to wireless access systems, point-to-point and point-to-multipoint wireless bridge.				



# SYNERGY TELECOM PVT LTD

## 3.5GHz Fiberglass Omni-directional Antennas



Model: STA-3500FA12  
Name: 3.5GHz Antenna

Model: STA-3500FA10  
Name: 3.5GHz Antenna

Model: STA-3500FA8  
Name: 3.5GHz Antenna

Model: STA-3500FA6  
Name: 3.5GHz Antenna

Model: STA-LC  
Name: U Clamp

Model	STA-3500FA12	STA-3500FA10	STA-3500FA8	STA-3500FA6
<b>Electrical specifications</b>				
Frequency Range -MHz	3400~3600	3500~3600	3400~3600	3400~3600
Gain-dBi	12	10	8	6
Polarization	Vertical	Vertical	Vertical	Vertical
VSWR	≤1.5	≤1.5	≤1.5	≤1.5
Vertical Beamwidth-°	7	10	16	24
Horizontal Beamwidth-°	360	360	360	360
Impedance-Ω	50	50	50	50
Max. Power-W	100	100	100	100
<b>Mechanical specifications</b>				
Connector	N-K	N-K	N-K	N-K
Dimension-mm	φ21×900	φ21×600	φ21×500	φ21×300
Net Weight-kg	0.55	0.68	0.25	0.42
Operation Temperature-°C	-40~+60	-40~+60	-40~+60	-40~+60
Description: 3.5GHz WiMAX systems; Radiation effects, Wide range of Omni-directional Coverage, Wireless access systems, point-to-multipoint wireless bridge.				



**3.5GHz Parabolic Antennas**



Model: STA-3338GP19  
Name: 3.5GHz Antenna



Model: STA-3338GP22  
Name: 3.5GHz Antenna



Model: STA-3338GP25  
Name: 3.5GHz Antenna



Model: STA-3338GP28  
Name: 3.5GHz Antenna

Model	STA-3338GP19	STA-3338GP22	STA-3338P25	STA-3338P28
<b>Electrical specifications</b>				
Frequency Range -MHz	3300~3800	3300~3800	3300~3800	3300~3800
Gain-dBi	19	22	25	28
Polarization	Vertical or Horizontal	Vertical or Horizontal	Vertical or Horizontal	Vertical or Horizontal
VSWR	≤1.5	≤1.5	≤1.5	≤1.5
Vertical Beamwidth-°	16	13	10	7.5
Horizontal Beamwidth-°	12	9	10	7.5
Front-to-Back Ratio -dB	≥20	≥25	≥32	≥35
Impedance-Ω	50	50	50	50
Max. Power-W	100	100	100	100
<b>Mechanical specifications</b>				
Connector	N-K	N-K	N-K	N-K
Dimension-mm	400×300	600×400	Φ600	Φ900
Net Weight-kg	1.4	2.4	5	10
Operation Temperature-°C	-40~+60	-40~+60	-40~+60	-40~+60
Description: For 3.5GHz WiMAX system; high gain, good effect, Applicable to wireless access systems, long-distance point-to-point wireless bridge				

**5.8GHz Panel Antennas**



Model: STA-5800D90D16  
Name: 5.8GHz Panel Antenna



Model: STA-5800V90C17  
Name: 5.8GHz Panel Antenna



Model: STA-5800V120C15  
Name: 5.8GHz Panel Antenna

Model	STA-5800D90D16	STA-5800V90C17	STA-5800V120C15
<b>Electrical specifications</b>			
Frequency Range -MHz	5725~5850	5725~5850	5725~5850
Gain-dBi	16x2	17	15
Polarization	±45°	Vertical	Vertical
VSWR	≤1.5	≤1.5	≤1.5
Horizontal Beamwidth-°	90	90	120
Vertical Beamwidth-°	8	7	7
Front-to-Back Ratio -dBi	≥25	≥25	≥23
Impedance-Ω	50	50	50
Max. Power-W	100	100	100
<b>Mechanical specifications</b>			
Connector	N-K	N-K	N-K
Dimension-mm	450x168x56	450x128x56	450x128x56
Net Weight-kg	2.0	1.2	1.4
Operation Temperature-°C	-40~+60	-40~+60	-40~+60
Description: For 5GHz frequency ,WLAN /Wi-Fi system, Support IEEE802.11a; Sector coverage, Applicable to wireless access systems, Multipoint wireless bridge. .			



**5.1~5.8GHz Flat Panel Antennas**



Model: STA-5158PG18  
Name: 5.8GHz Panel Antenna

Model: STA-5158PB15V90  
Name: 5.8GHz Panel Antenna

Model: STA-5158PD18x2  
Name: 5.8GHz Panel Antenna

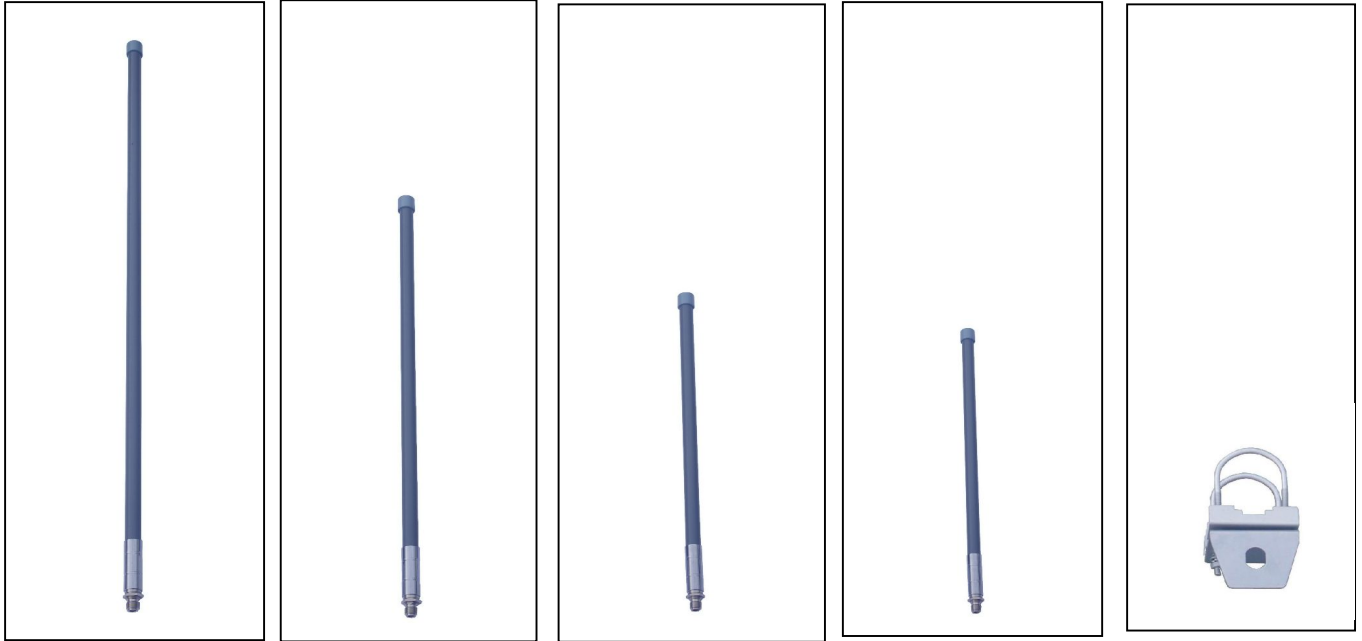
Model: STA-5158EPF23  
Name: 5.8GHz Panel Antenna

Model	STA-5158PG18	STA-5158PB15V90	STA-5158PD18x2	STA-5158EPF23
<b>Electrical specifications</b>				
Frequency Range -MHz	5150~5850	5150~5850	5150~5850	5150~5850
Gain-dBi	18	15	18x2	23
Polarization	Vertical or horizontal	Vertical	Vertical or horizontal	Vertical or horizontal
VSWR	≤1.5	≤1.5	≤1.5	≤1.5
Vertical Beamwidth-°	20	14	17	11
Horizontal Beamwidth-°	20	90	17	11
Front-to-Back Ratio -dB	≥25	≥25	≥25	≥25
Impedance-Ω	50	50	50	50
Max. Power-W	50	50	50	50
<b>Mechanical specifications</b>				
Connector	N-K	N-K	N-K	N-K
Dimension-mm	190×190×30	235×195×35	260×260×35	305×305×25
Net Weight-kg	0.55	0.75	1.4	2.5
Operation Temperature-°C	-40~+60	-40~+60	-40~+60	-40~+60

Description: For 5GHz frequency WLAN /WiFi system, support IEEE802.11a; Wide range of applications, Applicable to a public hot spot coverage, Wireless digital image transmission, Point-to-point and point-to-multipoint wireless bridge.



**5.8GHz Fiberglass Omni-directional Antennas**



Model: STA-5800FA12

Model: STA-5800FA10

Model: STA-5800FA8

Model: STA-5800FA6

Model: STA-LC

Name: 5.8GHz Antenna

Name: 5.8GHz Antenna

Name: 5.8GHz Antenna

Name: 5.8GHz Antenna

Name: U Clamp

Model	STA-5800FA12	STA-5800FA10	STA-5800FA8	STA-5800FA6
<b>Electrical specifications</b>				
Frequency Range -MHz	5725~5850	5725~5850	5725~5850	5725~5850
Gain-dBi	12	10	8	6
Polarization	Vertical	Vertical	Vertical	Vertical
VSWR	≤1.5	≤1.5	≤1.5	≤1.5
Vertical Beamwidth-°	7	10	16	25
Horizontal Beamwidth-°	360	360	360	360
Impedance-Ω	50	50	50	50
Max. Power-W	50	50	50	50
<b>Mechanical specifications</b>				
Connector	N-K	N-K	N-K	N-K
Dimension-mm	Φ21×550	Φ21×430	Φ21×330	Φ21×260
Net Weight-kg	0.55	0.35	0.2	0.18
Operation Temperature-°C	-40~+60	-40~+60	-40~+60	-40~+60
Description : For 5GHz frequency WLAN/WiFi system, support IEEE802.11a ; Wide range of applications, applicable to public hot spot coverage, Wireless digital image transmission, Point-to-point and point-to-multipoint wireless bridge.				



**5.8GHz Grid Parabolic Antennas**



Model: STA-5800GP24

Model: STA-5800GP27

Model: STA-5800GP30

Name: 5.8GHz Grid Parabolic Antenna

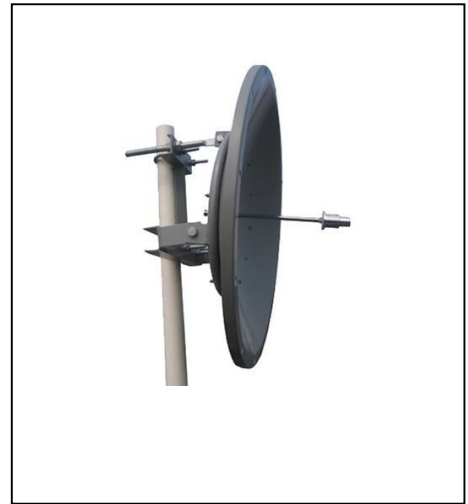
Name: 5.8GHz Grid Parabolic Antenna

Name: 5.8GHz Grid Parabolic Antenna

Model	STA-5800GP24	STA-5800GP27	STA-5800GP30
<b>Electrical specifications</b>			
Frequency Range -MHz	5725~5850	5725~5850	5725~5850
Gain-dBi	24	27	30
Polarization	Vertical or horizontal	Vertical or horizontal	Vertical or horizontal
Horizontal Beamwidth-°	9	6	4
Vertical Beamwidth-°	12	9	6
VSWR	≤1.5	≤1.5	≤1.5
Front-to-Back Ratio -dB	≥20	≥25	≥32
Impedance-Ω	50	50	50
Max. Power-W	100	100	100
<b>Mechanical specifications</b>			
Connector	N-K	N-K	N-K
Dimension-mm	400x300	600x400	900x600
Net Weight-kg	1.4	2.4	4.6
Operation Temperature-°C	-40~+60	-40~+60	-40~+60
Description: For 5GHz frequency WLAN /WiFi system, Support IEEE802.11a; high gain, good effect, Applies to wireless digital image transmission, Point-to-point wireless bridge .			



**5.8GHz Parabolic Antennas**



Model: STA-5800P29

Name: 5.8GHz Parabolic Antenna

Model: STA-5800P32

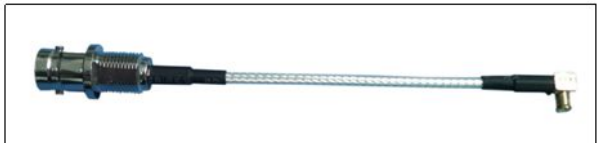
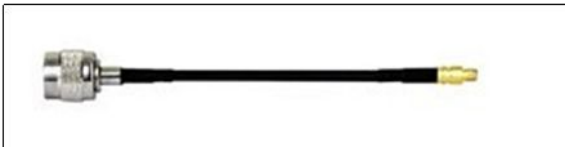
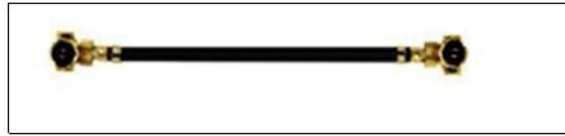
Name: 5.8GHz Parabolic Antenna

Model: STA-5800P34

Name: 5.8GHz Parabolic Antenna

Model	STA-5800P29	STA-5800P32	STA-5800P34
<b>Electrical specifications</b>			
Frequency Range -MHz	5725~5850	5725~5850	5725~5850
Gain-dBi	29	32	34
Polarization	Vertical or horizontal	Vertical or horizontal	Vertical or horizontal
VSWR	≤1.5	≤1.5	≤1.5
Horizontal Beamwidth-°	6	4	3
Vertical Beamwidth-°	6	4	3
Front-to-Back Ratio -dB	≥20	≥25	≥32
Impedance-Ω	50	50	50
Max. Power-W	100	100	100
<b>Mechanical specifications</b>			
Connector	N-K	N-K	N-K
Dimension-mm	Φ600	Φ900	Φ1250
Net Weight-kg	5	10	24.5
Operation Temperature-°C	-40~+60	-40~+60	-40~+60
Description: For 5GHz frequency WLAN /Wi-Fi system, Support IEEE802.11a; high gain, good effect, Applies to wireless digital image transmission, Point-to-point wireless bridge.			

**Interface Cable Series**

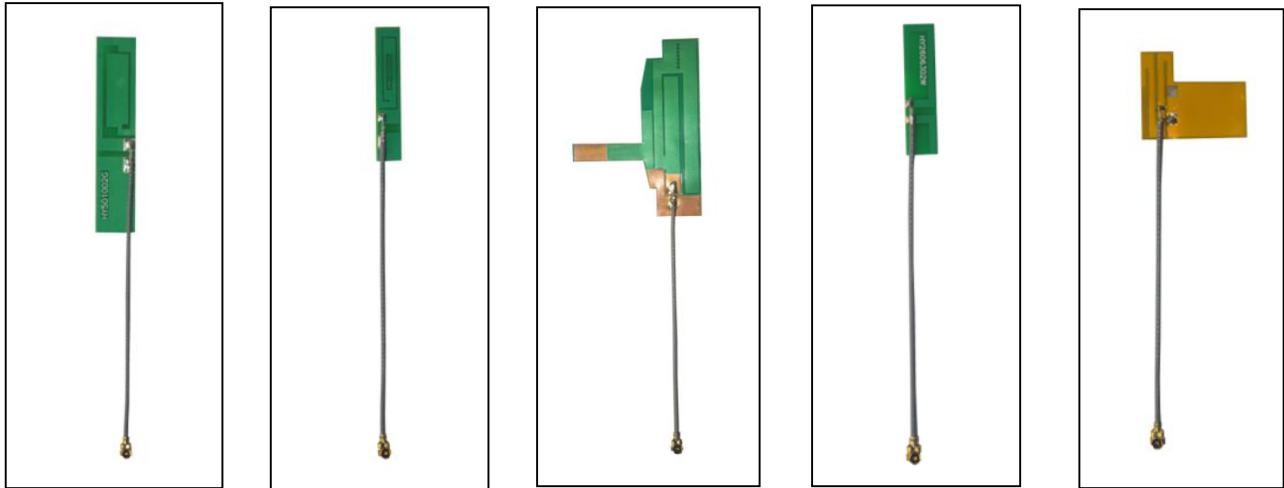


Electrical specifications					Mechanical specifications		
Model	Frequency Range -MHz	VSWR	Insertion Loss-db	Impedance-Ω	Connector	Cable	Length-mm
SMB-MCX-60	DC-3000	≤1.3	≤0.2	50	SMB-MCX	RG174	60 or customized
IPEX-IPEX-60	DC-3000	≤1.3	≤0.2	50	IPEX-IPEX	1.13	60 or customized
TNC-MCX-60	DC-3000	≤1.3	≤0.2	50	TNC-MCX	RG174	60 or customized
CRC9-FME-60	DC-3000	≤1.3	≤0.2	50	CRC9-FME	RG316	60 or customized
SMA-IPEX-100	DC-3000	≤1.3	≤0.2	50	SMA-IPEX	1.13	100 or customized
Fakra-SMA-100	DC-3000	≤1.3	≤0.2	50	Fakra-SMA	RG178	100 or customized
BNC-MCX-100	DC-3000	≤1.3	≤0.2	50	BNC-MCX	RG178	100 or customized
NJ-NK-300	DC-3000	≤1.3	≤0.2	50	NJ-NK	3D-FB	300 or customized

Description: The connection between the RF port or module to the antenna used in a variety of devices.



**Internal Antennas Series**



Model: STA-0819ITF1-60    Model: STA-0918ITF2-60    Model: STA-0819ITF3-60    Model: STA-2400ITF4-60    Model: STA-2400ITF5-60  
 Name: GSM Antenna    Name: GSM Antenna    Name: GSM Antenna    Name: WiFi Antenna    Name: W i Antenna

Model	STA-0819ITF1-60	STA-0918ITF2-60	STA-0819ITF3-60	STA-2400ITF4-60	STA-2400ITF5-60
<b>Electrical specifications</b>					
Frequency Range -MHz	850/900/1800/1900	900/1800	850/900/1800/1900	2400-2483	2400-2483
VSWR	≤2.5	≤2.5	≤2.5	≤2.0	≤2.0
Gain-dBi	2.0	2.0	2.0	2.0	2.0
Polarization	Vertical	Vertical	Vertical	Vertical	Vertical
Impedance-Ω	50	50	50	50	50
Max. Power-W	20	20	20	20	20
<b>Mechanical specifications</b>					
Connector	IPEX	IPEX	IPEX	IPEX	IPEX
Dimension-mm	50×10×0.6	40×5.5×0.6	46.5×33.5×0.2	26×6.5×0.6	18.3×22×0.2
Cable Length-mm	60 or customized	60 or customized	60 or customized	60 or customized	60 or customized
Material	FR4	FR4	FPC	FR4	FPC
Mounting Way	3M Adhesive	3M Adhesive	3M Adhesive	3M Adhesive	3M Adhesive
Operation Temperature-°C	-40~+60	-40~+60	-40~+60	-40~+60	-40~+60
Humidity-%	5~95	5~95	5~95	5~95	5~95
Description: Application in GSM/GPRS/2.4GHz WLAN / WiFi system and the user terminal.					