



Mob: +91 7217885948

[www.rfconnector.in](http://www.rfconnector.in)

[pradeep@rfconnector.in](mailto:pradeep@rfconnector.in)



[www.rfconnector.in](http://www.rfconnector.in)



## BNC/BNC 75 HDTV/BNC-TRX

R141/R142/R266



Mob: +91 7217885948

[www.rfconnector.in](http://www.rfconnector.in)

[pradeep@rfconnector.in](mailto:pradeep@rfconnector.in)



[www.rfconnector.in](http://www.rfconnector.in)



Section 9 Table of Contents

**BNC**

Introduction..... 9-4 to 9-5  
Interface.....9-6 to 9-7  
Characteristics . ..... 9-8 to 9-11  
Panel Drilling . .....9-31 to 9-32

**COMPOSITE BNC 75 HDTV**

Plugs ..... 9-12

**BNC 75 HDTV**

Plugs . ..... 9-13  
Jacks . ..... 9-14  
Receptacles..... 9-14  
Adapters. .... 9-15

**BNC 50Ω**

Plugs ..... 9-16 to 9-17  
Jacks ..... 9-18 to 9-19  
Receptacles.....9-20 to 9-22  
Adapters..... 9-23 to 9-24  
Caps.....9-24

**BNC 75Ω**

Plugs .....9-25 to 9-26  
Jacks .....9-26 to 9-27  
Receptacles. ....9-28  
Adapters. ....9-29

**BNC-TRX**

Characteristics . .....9-30  
Plugs .....9-30  
Jacks .....9-30  
Receptacles.....9-30



BNC



50Ω	DC - 4 GHz
	DC - 1.5 GHz (Commercial)
	DC - 1.0 GHz (Eco)
	DC - 10 GHz (TRIAxIAL)
75Ω	DC - 1.5 GHz
	DC - 6 GHz (HDTV)
	DC - 1.0 GHz (Eco)

## INTRODUCTION

### GENERAL

- Worldwide standardized coaxial connectors
- Bayonet coupling
- Proven strength and reliability
- Good RF performance

### APPLICABLE STANDARDS

- MIL-C-39012 / MIL STD 348-A/301
- IEC 169-8
- CECC 22120
- NF-C-93564 KBN series
- UTE-C-93564

### APPLICATIONS

- Civil and military radio-telecommunication equipment
- Test and measurement
- Video communication
- Broadcast
- Industrial network
- General electronics

The BNC connector is the most popular coaxial connector series in the world, featuring a two-pin bayonet coupling system for quick and reliable engagement and disengagement.

#### • WIDE RANGE

Radiall's BNC connectors are available with two characteristic impedances: 50Ω and 75Ω. They are completely intermateable. RADIALL also offers low-cost BNC range, and a triaxial BNC TRX series.

#### • CONVENIENT THREE PIECE DESIGN

Straight and right angle crimp type cable connectors feature a three piece design: single piece body + center contact + outer ferrule.





BNC

**• FAST AND RELIABLE CABLE ATTACHMENT**

- Cable connectors can be either fully crimped or soldered/crimped, offering full flexibility for fast, reliable, high-volume production with standard manual or pneumatic tooling.
- The center contact can be either crimped or soldered.
- The outer contact is attached to the cable by crimping a ferrule.

**COMPOSITE BNC 75Ω HDTV CONNECTOR****GENERAL**

- The first lightweight composite HDTV BNC available on the market
- Easy to connect and disconnect from the rear-ideal for high-density and recessed bulkhead applications
- Color-coded boots directly on the connector for easy video signal identification
- Guaranteed frequency up to 6 GHz for studio-quality performance
- 1000 mating cycles minimum for guaranteed durability in the field
- True 75Ω design

HDTV places new demands on maintaining high signal integrity at high data rates, from studio-quality broadcast production to video conferencing equipment, our selection of affordable HDTV BNC connectors offer more bandwidth, more performance, and are easier to use.

Our new technologically advanced high-speed composite BNC 75Ω HDTV connector features an incredible easy-to-use two-piece design that makes it easy to crimp on the cable. This new connector can handle data rates up to 3 Gbps or higher while meeting or exceeding SMPTE 292M and 424M standards. The gold plated center and outer contacts provide outstanding electrical performance with a frequency range of up to 6 GHz, and a low return loss of -32 dB at 3 GHz.

The connector comes in a wide variety of colors for signal cable identification and its special curved interface composite material design with positioning marks makes it easy and fast to connect in high-density and recessed bulkhead applications.

**APPLICATIONS**

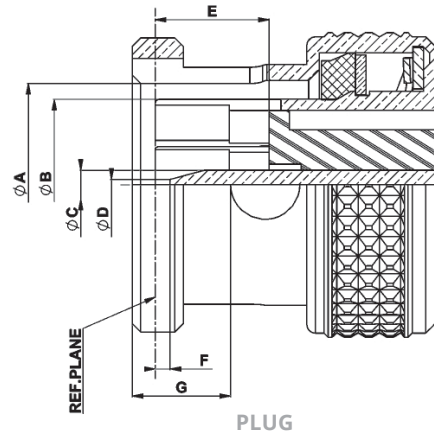
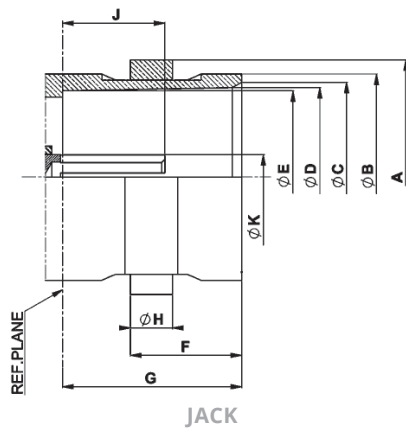
- Broadcast TV stations and studios
- Video routing and production
- Video surveillance equipment
- Video conference equipment





BNC 75 HDTV/BNC 50Ω

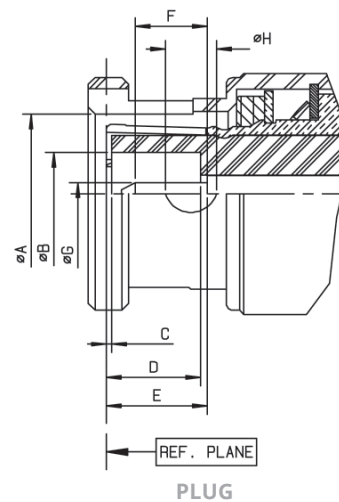
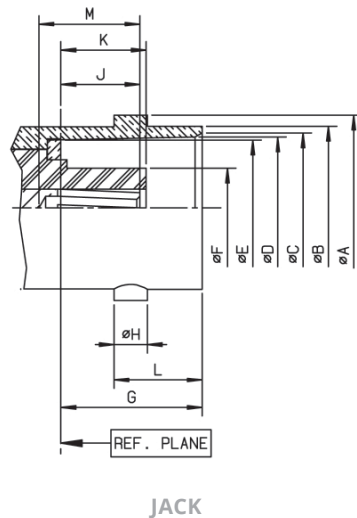
### INTERFACE BNC 75 HDTV



LETTER	MM		INCH	
	MIN	MAX	MIN	MAX
A	10.97	11.07	.432	.436
B	9.60	9.67	.378	.381
C	8.80	9.00	.346	.354
D	8.32	8.46	.328	.333
E	8.10	8.15	.319	.321
F	5.18	5.28	.204	.208
G	8.30	8.50	.327	.335
H	1.90	2.06	.075	.081
J	4.72	5.22	.186	.206
K	2.10	2.14	.083	.084

LETTER	MM		INCH	
	MIN	MAX	MIN	MAX
A	9.80	9.90	.386	.390
B	8.30	8.40	.327	.331
C	1.32	1.37	.052	.054
D	0.35	0.65	.014	.026
E	5.30	5.50	.209	.217
F	0.10	0.90	.004	.035
G	4.57	4.67	.180	.184

### INTERFACE BNC 50Ω



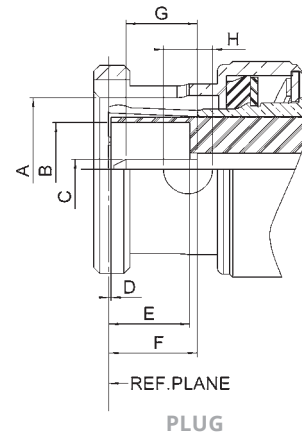
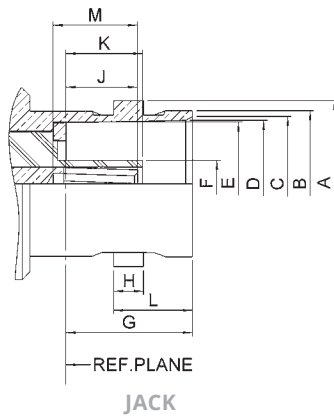


BNC 50Ω/BNC 75Ω

LETTER	MM		INCH	
	MIN	MAX	MIN	MAX
A DIA	10.97	11.07	.432	.436
B DIA	9.60	9.70	.378	.382
C DIA	8.79	9.04	.346	.356
D DIA	8.31	8.46	.327	.333
E DIA	8.10	8.15	.319	.321
F DIA	-	4.72	-	.186
G	8.31	8.51	.327	.335
H	1.91	2.06	.075	.081
J	4.72	5.23	.186	.206
K	4.78	5.28	.188	.208
L	5.18	5.28	.204	.208
M	4.95	-	.195	-

LETTER	MM		INCH	
	MIN	MAX	MIN	MAX
A DIA	9.78	9.91	.385	.390
B DIA	4.83	-	.190	-
C	0.15	-	.006	-
D	5.28	5.79	.208	.228
E	5.33	5.84	.210	.230
F	1.98	-	.078	-
G DIA	1.32	1.37	.052	.054
H DIA	2.31	2.46	.091	.097

**INTERFACE BNC 75Ω**



LETTER	MM		INCH	
	MIN	MAX	MIN	MAX
A DIA	10.97	11.07	.432	.436
B DIA	9.60	9.67	.378	.381
C DIA	8.80	9.00	.347	.354
D DIA	8.32	8.46	.328	.333
E DIA	8.10	8.15	.319	.321
F DIA	4.62	4.72	.182	.186
G	8.30	8.50	.326	.334
H	1.90	2.06	.074	.081
J	4.72	5.23	.186	.205
K	4.78	5.28	.196	.206
L	5.18	5.28	.204	.208
M	5.30	5.90	.209	.232

LETTER	MM		INCH	
	MIN	MAX	MIN	MAX
A DIA	9.80	9.90	.386	.389
B DIA	6.10	6.30	.240	.248
C DIA	1.32	1.37	.052	.054
D	0.05	-	.002	-
E	5.42	5.78	.213	.227
F	5.35	5.87	.211	.231
G	3.00	3.40	.118	.134
H DIA	3.15	3.35	.124	.132



BNC 75 HDTV

## CHARACTERISTICS

TEST / CHARACTERISTICS	VALUES / REMARKS
------------------------	------------------

### ELECTRICAL CHARACTERISTICS

Frequency Range	DC - 6 GHz (Optimized at 3 GHz)		
Impedance	75Ω		
V.S.W.R. (max)	DC - 1.5 GHz	1.5 - 3 GHz	3 - 6 GHz
• Interface (Plug + Jack)	1.02	1.05	1.08
• Mated Pair	1.05	1.12	1.25
• In Series Adapters	1.04	1.07	1.12
Working Voltage	500 Vrms		
Dielectric Withstanding Voltage	1500 Vrms		
RF Leakage @ 1 GHz	75 dB		
RF Leakage @ 3 GHz	60 dB		
RF Leakage @ 6 GHz	50 dB		

### MECHANICAL CHARACTERISTICS

Mating	Intermateable with 50Ω and 75Ω Standard BNC Connectors
Long Life Duration (Mating Endurance)	1000 cycles
Engagement Force	13.6 N
Mating Torque (Bayonet)	28.6 N.cm
Coupling Nut Retention Force	Axial Force: 450 N Bending Stress: 1000 N.cm
Center Contact Insertion Force	10 N max
Vibration	MIL STD 202 Meth.204 Cond B

### ENVIRONMENTAL CHARACTERISTICS

Temperature Range	-65 °C + 165 °C
Moisture Resistance	MIL STD 202, Meth. 106 CECC 22000 Paragraph 4.6.6
Corrosion Resistance	MIL STD 202, Meth. 101 Cond B (48 hours Salt Spray)

### MATERIALS AND PLATING

Components	Material	Plating
Body	Brass	NPGR / BBR / Nickel
Center Contact	Brass or Beryllium Copper	NPGR
Outer Contact	Brass	NPGR
Insulator	PTFE	-
Gasket	Silicone Rubber	-

## COMPOSITE VERSION

### CHARACTERISTICS

Frequency Range	DC up to 6 GHz
Impedance	75Ω
VSWR	1.05 @ 3GHz (Return loss -32dB)
Mating Cycles	1000
Temperature Range	-40 °C ~ + 85 °C

### MATERIALS AND PLATING

Parts	Material	Plating
Coupling Nut	Composite	-
Body	Brass	Gold
Outer Contact	Brass	Gold
Center Contact	Brass	Gold
Insulator	PTFE	-



BNC 50Ω

## CHARACTERISTICS

TEST / CHARACTERISTICS	STANDARD REFERENCE	VALUES / REMARKS		
<b>ELECTRICAL CHARACTERISTICS</b>				
Impedance	-	50Ω		
Frequency Range	-	DC - 4 GHz		
Typical V.S.W.R.	-	1 GHz	2.5 GHz	4 GHz
• Straight Models Cable Group: 2/50, 2.6/50, 5/50, 10 + 11/50, .141"	-	1.12	1.18 1.30 max	1.22
• Right Angle Models: 2/50, 2.6/50, 5/50	-	1.13	1.20	1.22
Insertion Loss	MIL	0.05	0.07	0.13
• Straight Connector		0.08	0.16	0.20
• Right-Angle Connector				
RF Leakage		-55 dB min from 2 to 3 GHz		
Insulation Resistance		5000 MΩ min		
Contact Resistance	MIL	1.5 mΩ		
• Center Contact		0.2 mΩ		
• Outer Contact				
Working Voltage in VRMS		500		
• At Sea Level (at 21000m)		125		
Dielectric Withstanding Voltage in VRMS		1500		
• At Sea Level (at 21000m)		375		
RF Testing Voltage in VRMS Sea Level (5 MHz)	-	1000		

## MECHANICAL CHARACTERISTICS

Durability	MIL	500 Matings		
Force to Engage and Disengage		13.6 N max		
• Axial		28.6 Ncm		
• Torque		445 N		
Coupling Nut Retention Force		227 N		
Cable Retention Force		27.2 N		
• Cable 2/50, 2.6/50				
• Cable 5/50, 10 + 11/50				
• Cable .141"				
Center Contact Retention Force				

## ENVIRONMENTAL CHARACTERISTICS

Temperature Range	MIL	-65 °C + 165 °C		
• Flexible Cables		-65 °C + 105 °C		
• Semi-Rigid Cables		MIL STD 202, Method 107, Condition B		
Thermo Cycling Test		MIL STD 202, Method 107, Condition B		
Thermal Shock		MIL STD 202, Method 108		
High Temperature Endurance		MIL STD 202, Method 101, Condition B		
Corrosion Salt Spray		MIL STD 202, Method 204, Condition B		
Vibration		MIL STD 202, Method 213, Condition G		
Shock		MIL STD 202, Method 106		
Moisture Resistance		MIL STD 202, Method 112, Condition C		
Hermetic Test	Vacuum 10 <sup>-6</sup> Hgmm (Torr) Leakage Rate < 10 <sup>-6</sup> atm/cm <sup>3</sup> /s			
Barometric Pressure		Pressure Test: 3.5 bars; Duration: 2 mn; Temperature: 15 °C to 25 °C		

## MATERIALS AND PLATING

	Material	Plating
Bodies	Brass	Nickel / BBR
Center Contact	Brass	Gold
• Male	Bronze or Heat Treated Beryllium Following QQ-C-530	
• Female		
Nut	Brass	-
Insulator	PTFE	-
Gasket	Silicone Rubber	-

### Notes

All dimensions are given in mm.



BNC 75Ω

## CHARACTERISTICS

TEST / CHARACTERISTICS	STANDARD REFERENCE	VALUES / REMARKS
<b>ELECTRICAL CHARACTERISTICS</b>		
Impedance	-	75Ω
Frequency Range	-	DC - 1.5 GHz
V.S.W.R. max	-	1.30
• Straight Models Cable Group: 2.6/75, 5/75, 6/75, 8/75, 10 + 11/75	-	1.35
• Right Angle Models: 2.6/75, 6/75	-	1.35
Insertion Loss	MIL	0.2 dB max at 1 GHz
• Straight Connector		0.3 dB max at 1 GHz
• Right-Angle Connector		
RF Leakage		-55 dB min from 2 to 3 GHz
Insulation Resistance		5000 MΩ min
Contact Resistance		1.5 mΩ
• Center Contact		0.2 mΩ
• Outer Contact		
Working Voltage in VRMS		500
• At Sea Level		125
(at 21000m)		
Dielectric Withstanding Voltage in VRMS		1500
• At Sea Level		375
(at 21000m)		
RF Testing Voltage in VRMS Sea Level (5 MHz)	-	1000

## MECHANICAL CHARACTERISTICS

Durability	MIL	500 Matings
Force to Engage and Disengage		
• Axial		13.6 N max
• Torque		28.6 Ncm
Coupling Nut Retention Force		445 N
Cable Retention Force		340 N
Cable 2.6/75, 5/75, 6/75, 8/75, 10 + 11/75		
Center Contact Retention Force		27 N

## ENVIRONMENTAL CHARACTERISTICS

Temperature Range	MIL	-65 °C + 105 °C
• Flexible Cables		
Thermo Cycling Test		MIL STD 202, Method 107, Condition B
High Temperature Endurance		MIL STD 202, Method 108
Corrosion Salt Spray		MIL STD 202, Method 101, Condition B
Vibration		MIL STD 202, Method 204, Condition B
Shock		MIL STD 202, Method 213, Condition G
Moisture Resistance		MIL STD 202, Method 106
Barometric Pressure		Pressure test: 3.5 bars; duration: 2 mn; temperature: 15°C to 25°C

## MATERIALS AND PLATING

	Material	Plating
Bodies	Brass	Nickel
Center Contact	Brass Bronze or Heat Treated Beryllium Following QQ-C-530	Gold
• Male		
• Female		
Nut	Brass	-
Insulator	PTFE	-
Gasket	Silicone Rubber	-

### Notes

Standard packaging = 100 pieces



BNC

## CHARACTERISTICS

### COMMERCIAL VERSION R141 XXX 161 AND R142 XXX161

TEST / CHARACTERISTICS	VALUES / REMARKS
------------------------	------------------

#### ELECTRICAL CHARACTERISTICS

	R141 XXX 161	R142 XXX 161
Impedance	50Ω	75Ω
Operating Frequency	DC to 1.5 GHz	
Typical V.S.W.R. (1.5 GHz)		
• Straight Models	∅ 2.6	1.21
	∅ 5	1.14
	∅ 6	1.05
• Right Angle Models	∅ 5 & ∅ 6	1.17
Testing Voltage (VRMS)	1500	
Operating Voltage (VRMS)	500	
Insulation Resistance (MΩ)	5000	
Contact Resistance (MΩ)	10	

#### MECHANICAL CHARACTERISTICS

Durability	100 Matings
------------	-------------

#### ENVIRONMENTAL CHARACTERISTICS

Temperature Range	-40 °C + 85 °C
-------------------	----------------

#### MATERIALS AND PLATING

	Material	Plating
Male and Female Bodies	Brass	Nickel
Coupling Nut	Die Cast Zinc	-
Outer Contact	Brass	-
Insulators	Polypropylene	-
Male and Female Center Contacts	Brass	Gold

### ECO VERSION R141A XXX XXX AND R142A XXX XXX

TEST / CHARACTERISTICS	VALUES / REMARKS
------------------------	------------------

#### ELECTRICAL CHARACTERISTICS

	R141A XXX XXX	R142A XXX XXX
Impedance	50Ω	75Ω
Frequency Range	DC to 1 GHz	
Typical V.S.W.R. (Straight Models)	1.3 at 1 GHz	
Temperature Range	-40 °C / +85 °C	
Durability	100 Mating Cycles	

#### MATERIALS AND PLATING

	Material	Plating
Connector Body	Brass / Die Cast Zinc	Nickel
Insulators	PTFE / Polypropylene	-
Female Center Contacts	Phosphor Bronze	Gold 0.1μm Typical (Center Contact)

#### PACKAGING

Packaging	100 Pieces Bulk Unit Packaging
-----------	--------------------------------

#### Notes

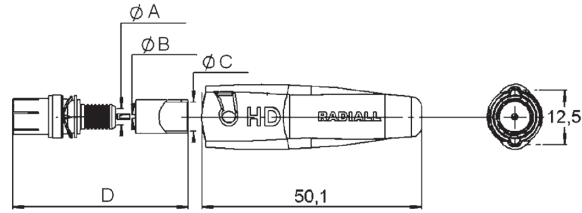
Standard packaging = 100 pieces  
All dimensions are given in mm.



Composite BNC 75 HDTV

## PLUGS

### STRAIGHT PLUGS CRIMP TYPE FOR FLEXIBLE CABLES



CABLE GROUP	CABLE GROUP DIA.	PART NUMBER	COLOR	DIMENSIONS			
				A	B	C	D
Mini RG59 Belden 1855A, DRAKA 0.6/2.8 CAE HD 0628	0.6/2.8	R142 079 750	Black	2.85	0.65	5.42	26.7
		R142 079 751	Red				
		R142 079 752	Green				
		R142 079 753	Blue				
		R142 079 754	Yellow				
		R142 079 755	Grey				
		R142 079 756	White				
		R142 079 757	Brown				
		R142 079 758	Orange				
		R142 079 759	Violet				
RG59 BELDEN 1505A DRAKA 0.8/3.7 ARGOSY Image 720 CAE HD 08370	0.8/3.7	R142 079 760	Black	3.75	0.85	6.6	25.7
		R142 079 761	Red				
		R142 079 762	Green				
		R142 079 763	Blue				
		R142 079 764	Yellow				
		R142 079 765	Grey				
		R142 079 766	White				
		R142 079 767	Brown				
		R142 079 768	Orange				
		R142 079 769	Violet				
RG6 BELDEN 1694A DRAKA 1.0/4.8 ARGOSY Image 1000 CAE 10460	1.0/4.8	R142 079 770	Black	4.85	1.05	7.1	23.7
		R142 079 771	Red				
		R142 079 772	Green				
		R142 079 773	Blue				
		R142 079 774	Yellow				
		R142 079 775	Grey				
		R142 079 776	White				
		R142 079 777	Brown				
		R142 079 778	Orange				
		R142 079 779	Violet				



BNC 75 HDTV

## PLUGS

### STRAIGHT PLUGS CRIMP TYPE FOR FLEXIBLE CABLES

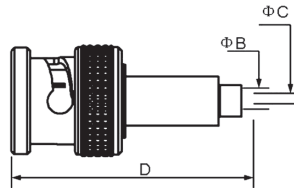


FIG. 1

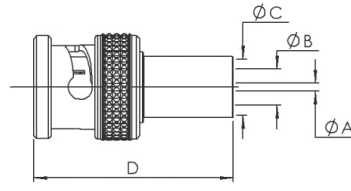
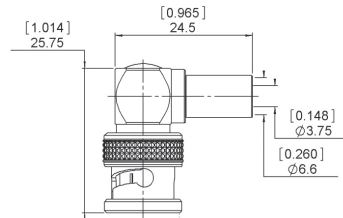


FIG. 2

CABLE GROUP	CABLE GROUP DIA.	PART NUMBER	FIG.	DIMENSIONS MM (INCH)				PACKAGING	NOTE
				A	B	C	D		
RD179 BELDEN 179DT, DRAKA 0.31/1.45 AF, CAE HD 03140	0.3/1.4	R142 077 742	1	-	1.55	0.4	29.7	100	-
Mini RG59 Belden 1855A, Draka 0.6/2.8 AF, CAE HD 0628	0.6/2.8	R142 077 702	2	0.85 (.03)	2.85 (.11)	5.42 (.21)	27.68 (1.09)	100	-
Mini RG59 Argosy Image 360	0.6/2.95	R142 077 712			3.00 (.12)				-
RG59 Belden 1505A, Draka 0.8/3.7 AF, CAE HD 08370, Argosy Image 720	0.8/3.7	R142 077 722			3.75 (.15)	6.60 (.26)	26.68 (1.05)		-
RG6 Belden 1694A, Draka 1.0/4.8 AF, CAE HD 10460, Argosy Image 1000	1.0/4.8	R142 085 702		0.90	3.95	6.60	28.68		Hexagonal Crimp Tool 1.73/6.48
RG11 Belden 7731, Draka 1.6/7.3 AF, CAE HD16720, Argosy Image 2000	1.6/7.3	R142 077 747		1.05 (.04)	4.85 (.19)	7.50 (.30)	26.68 (1.05)		-
				1.70	7.45	11.05	32		-

### RIGHT ANGLE PLUG CRIMP TYPE FOR FLEXIBLE CABLE



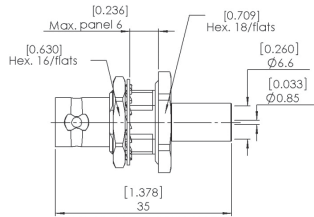
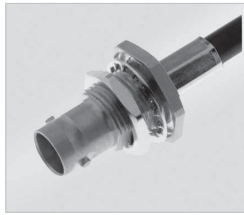
CABLE GROUP	CABLE GROUP DIA.	PART NUMBER	PACKAGING
RG59 Belden 1505A, Draka 0.8/3.7 AF, CAE HD 08370, Argosy Image 720	0.8/3.7	R142 187 720	100



BNC 75 HDTV

## JACKS AND RECEPTACLES

### STRAIGHT BULKHEAD JACK CRIMP TYPE FOR FLEXIBLE CABLE



CABLE GROUP	CABLE GROUP DIA.	PART NUMBER	PANEL DRILLING	PACKAGING
RG59 Belden 1505A, Draka 0.8/3.7 AF, CAE HD 08370, Argosy Image 720	0.8/3.7	R142 334 700	P16	100

### PCB FEMALE RECEPTACLES

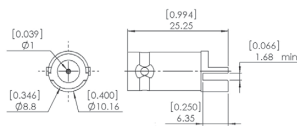


FIG. 1

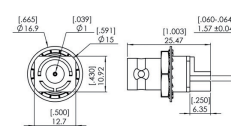


FIG. 2

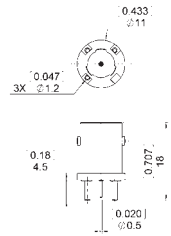
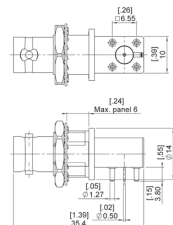


FIG. 3

PART NUMBER	FIG.	CAPTIVE CENTER CONTACT	PANEL DRILLING	PACKAGING	NOTE
R142 568 703	1	Yes	-	100	Edge Mount PCB
R142 567 703	2		-		Bulkhead Edge Mount PCB
R142 500 740	3		P20	60	Straight PCB, Zamak

### RIGHT ANGLE PCB FEMALE RECEPTACLES



PART NUMBER	CAPTIVE CENTER CONTACT	NOTE
R142 676 700	Yes	Bulkhead



BNC 75 HDTV

## ADAPTERS IN SERIES ADAPTERS

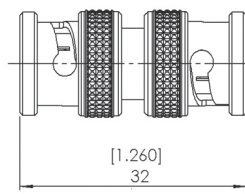


FIG. 1

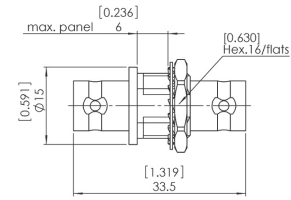


FIG. 2

PART NUMBER	FIG.	CAPTIVE CENTER CONTACT	PANEL DRILLING	NOTE	PACKAGING
R142 703 703	1	Yes	-	Male - Male	100
R142 720 700	2		P16	Female - Female	

## BETWEEN SERIES ADAPTERS

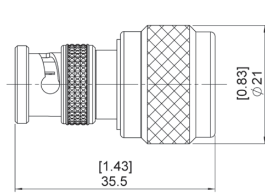


FIG. 1

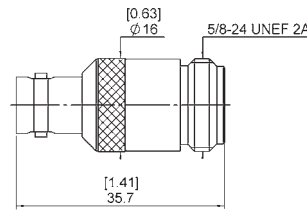


FIG. 2

PART NUMBER	FIG.	CAPTIVE CENTER CONTACT	NOTE
R192 417 010	1	Yes	BNC HD Male - N Male
R192 418 010	2		BNC HD Female - N Female



BNC 50Ω

## STRAIGHT PLUGS STRAIGHT PLUGS CLAMP TYPE

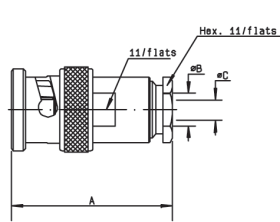


FIG. 1

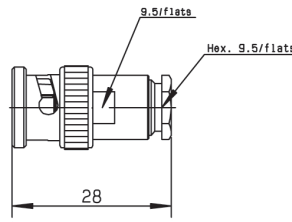


FIG. 2

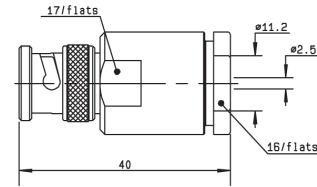


FIG. 3

CABLE GROUP	CABLE GROUP DIA.	PART NUMBER	FIG.	DIMENSIONS (MM)			CAPTIVE CENTER CONTACT	NOTE
				A	B	C		
RG178 / RG196	2/50/S + D	R141 003 000	1	27	2.2	0.6	Yes	-
RG174 / RG316 / RD316 / RG179	2.6/50+75/S+D	R141 004 000			3.1			-
PPD Cable	3.5/50	R141 005 000	2	28	3.7	1.2	No	-
RG58 / RG141	5/50/S	R141 007 000						-
RG58 / RG141 / RG142 / RG223 / RG400	5/50/S + D	R141 008 000	1	28	5.6	1.2	Yes	-
		R141 009 000			5.6	1.2		-
		R141 010 000			-	1.05		-
RG59 / RG62	6/75+93	R141 012 000	3	27.5	6.6	1.05	No	-
RG213 / RG393 / RG214 / RG216	10 + 11/50/S + D	R141 018 000					-	-
RG402	.141"	R141 052 000	1	29	3.65	1.2	No	Semi-Rigid Cable

## STRAIGHT PLUGS FULL CRIMP TYPE FOR FLEXIBLE CABLES

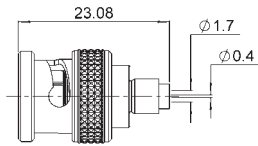


FIG. 1

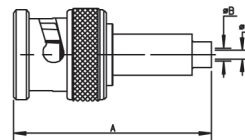


FIG. 2

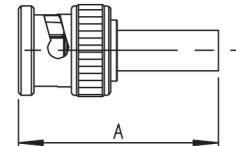


FIG. 3

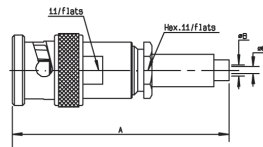


FIG. 4

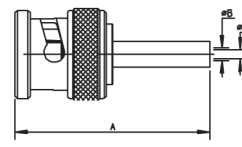


FIG. 5

CABLE GROUP	CABLE GROUP DIA.	PART NUMBER	FIG.	DIMENSIONS (MM)			CAPTIVE CENTER CONTACT	NOTE
				A	B	C		
RG178 / RG196	2/50/S	R141 070 520	1	23	1.7	0.4	Yes	Reverse Crimp
RG174 / RG316	2.6/50/S	R141 075 000	2	30.3	1.8	0.6		-
		R141 075 161						Commercial Version
		R141A 075 161	3	26	1.7	0.6		Single Piece Body / ECO Version
-	3.8/93/S	R141 077 000	2	28	2.7	0.4		-
RG58 / RG14	5/50/S	R141 072 000	4	39	3.1	-		-
		R141 082 000	5	28				Single Piece Body
		R141 082 161	3	30	3.1	1		Single Piece Body / Commercial Version
		R141A 082 161						ECO Version
RG142 / RG223 / RG400	5/50/D	R141 083 000	5	28	3	1.05		Single Piece Body



BNC 50Ω

## RIGHT ANGLE PLUGS AND STRAIGHT JACKS

### RIGHT ANGLE PLUGS CLAMP TYPE FOR FLEXIBLE CABLES

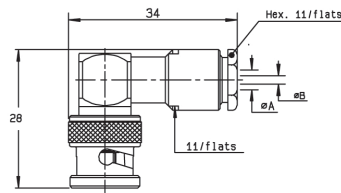
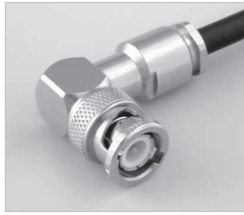


FIG. 1

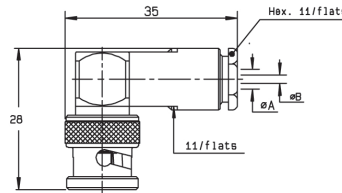


FIG. 2

CABLE GROUP	CABLE GROUP DIA.	PART NUMBER	FIG.	DIMENSIONS (MM)		CAPTIVE CENTER CONTACT	NOTE
				A	B		
RG178 / RG196	2/50/S	R141 153 000	1	2.2	0.6	Yes	100 Pieces
RG174 / RG316 / RD316 / RG179	2.6/50+75/S+D	R141 154 000		3.1			
RG58 / RG141 / RG142 / RG223 / RG400	5/50/S + D	R141 156 000	2	5.6	1.05		Unit Packaging

### RIGHT ANGLE PLUGS FULL CRIMP TYPE FOR FLEXIBLE CABLES

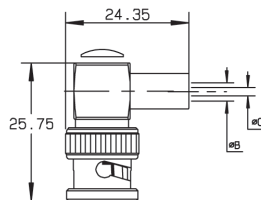


FIG. 1

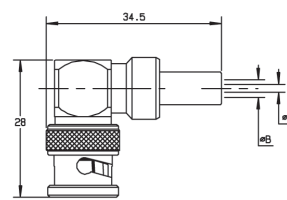


FIG. 2

CABLE GROUP	CABLE GROUP DIA.	PART NUMBER	FIG.	DIMENSIONS (MM)		CAPTIVE CENTER CONTACT	NOTE
				A	B		
RG174 / RG316	2.6/50/S	R141 181 161	1	3.25	1.7	Yes	Commercial Version
RG58 / RG141	5/50/S	R141 182 000	2	5.5	1.05		Single Piece Body
		R141 182 161	1	5.5	3.15		Commercial Version
RG142 / RG223 / RG400	5/50/D	R141 182 177	2	5.55	3.2	Non Magnetic	
		R141 183 000		5.8	1.05	Single Piece Body	

### STRAIGHT JACKS FOR FLEXIBLE CABLES

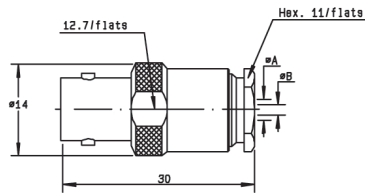


FIG. 1

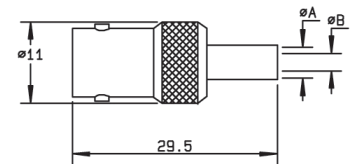


FIG. 2

CABLE GROUP	CABLE GROUP DIA.	PART NUMBER	FIG.	DIMENSIONS (MM)		CAPTIVE CENTER CONTACT	NOTE
				A	B		
RG58 / RG141 / RG142 / RG223 / RG400	5/50/S + D	R141 207 000	1	5.6	1.05	No	Clamp Type
		R141 208 000					
RG174 / RG316	2.6/50/S	R141 217 000	2	5.5	1.05	Yes	Full Crimp Type
RG58 / RG141	5/50/S	R141 237 000					Single Piece Body / Full Crimp Type
		R141 237 161					Commercial Version / Full Crimp Type
RG142 / RG223 / RG400	5/50/D	R141 220 000					Single Piece Body / Full Crimp Type



BNC 50Ω

## SQUARE FLANGE JACKS

### STRAIGHT SQUARE FLANGE JACKS CLAMP TYPE FOR FLEXIBLE CABLES

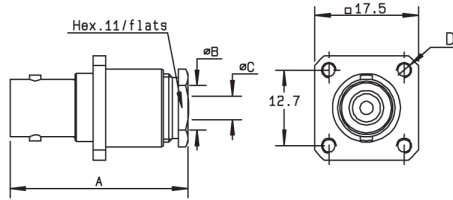
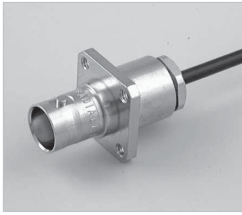


FIG. 1

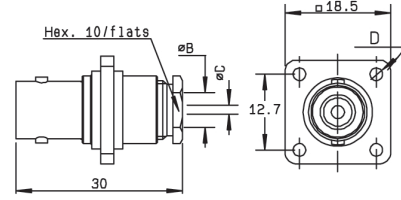


FIG. 2

CABLE GROUP	CABLE GROUP DIA.	PART NUMBER	FIG.	DIMENSIONS (MM)				CAPTIVE CENTER CONTACT	PANEL DRILLING	NOTE		
				A	B	C	D					
RG178 / RG196	2/50/S + D	R141 253 000	1	29.5	2.2	0.6	3-56-UNF-2B	Yes	P01	-		
RG174 / RG316 / RD316 / RG179	2.6/50+75/S+D	R141 254 000			3.1				-	2.7	P02	-
		R141 278 000			2				3	2.6	P01	Insulated Flange
RG58 / RG141	5/50/S	R141 257 000	1	30	5.6	1.05	2.5	No	P01	-		
		R141 256 000	2	-	5.6	1.05			P02	Insulated Flange		
RG58 / RG141 / RG142 / RG223 / RG400	5/50/S + D	R141 258 000	1	30	5.6	1.05	3-56-UNF-2B		P01	Unit Packaging		
RG59	6/75	R141 261 000		30	6.5	1	2.5	P10	-			

### STRAIGHT SQUARE FLANGE JACKS FULL CRIMP TYPE FOR FLEXIBLE CABLES

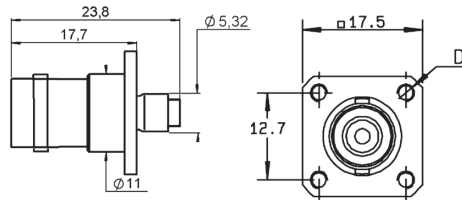


FIG. 1

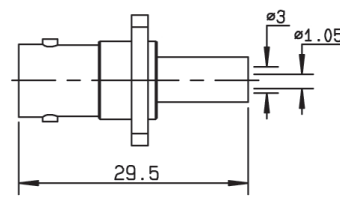


FIG. 2

CABLE GROUP	CABLE GROUP DIA.	PART NUMBER	FIG.	DIMENSIONS D (MM)	CAPTIVE CENTER CONTACT	PANEL DRILLING	NOTE
RG174 / RG316	2.6/50/S	R141 290 200	1	M3 x 0.5	Yes	P04	Reverse Crimping / Unit Packaging
RG58 / RG141	5/50/S	R141 292 000	2	3 x 56 UNEF 2B		P17	Single Piece Body



BNC 50Ω

## BULKHEAD JACKS

### STRAIGHT BULKHEAD JACKS CLAMP TYPE

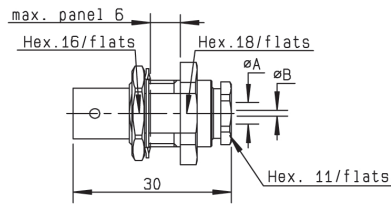


FIG. 1

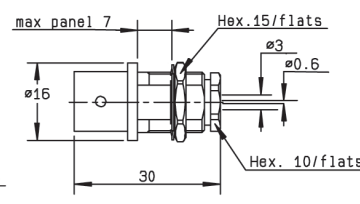


FIG. 2

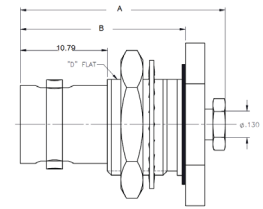


FIG. 3

CABLE GROUP	CABLE GROUP DIA.	PART NUMBER	FIG.	DIMENSIONS (MM)		CAPTIVE CENTER CONTACT	PANEL DRILLING	NOTE	
				A	B				
RG178 / RG196	2/50/S	R141 323 000	1	2.2	0.6	Yes	P11	Panel Sealed	
RG174 / RG316 / RD316 / RG179	2.6/50+75/S+D	R141 304 000	2	-	-			-	-
		R141 324 000	1	3.1	0.6			Totally Sealed	
RG174 / RG316 / RD316	2.6/50/S + D	R141 324 200	1	3.1	0.6	No	-	Panel Sealed	
RG58 / RG141 / RG142 / RG223 / RG400	5/50/S + D	R141 327 000	1	5.6	1.05	No	-	Panel Sealed	
RG401	.141"	R141 338 007	1	3.68	1.27	Yes	-	Panel Sealed / Non Magnetic	
		R141 338 000	1	3.65	1.05	No	-	-	
RG174 / RG316 / RG179	2.6/50+75S	6501-6571-103	3	27.42	20.98	Yes	P11	Panel Sealed	
RD316	2.6/50D	6501-7551-219		25.4	20.47				

### STRAIGHT BULKHEAD JACKS CRIMP TYPE FOR FLEXIBLE CABLES

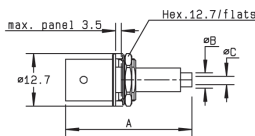


FIG. 1

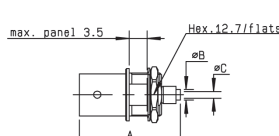


FIG. 2

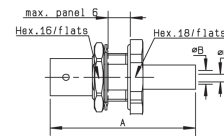


FIG. 3

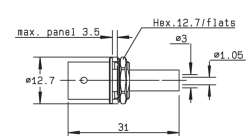


FIG. 4

CABLE GROUP	CABLE GROUP DIA.	PART NUMBER	FIG.	DIMENSIONS (MM)			CAPTIVE CENTER CONTACT	PANEL DRILLING	NOTE
				A	B	C			
RG178	2/50/S	R141 303 503	2	26.4	2	0.4	Yes	-	Reverse Crimping / Commercial Version
RD178	2/50/D	R141 301 000	1	33.35	1.09	0.6		P14	Reverse Crimping / Commercial Version
RG174 / RG316	2.6/50/S	R141 306 000	1	34	1.7	0.6	No	P11 or P16	Panel Sealed
		R141 306 503	2	26	2.95				ECO Version
		R141 331 500	3	38.5	1.7				Single Piece Body
RG58 / RG141	5/50/S	R141A 306 000	1	31	1.7	0.6	Yes	P11 or P16	Panel Sealed / Single Piece Body
		R141 308 000	4	-	-				-
		R141 332 500	3	35.5	3.1				1.05



BNC 50Ω

## FLANGE RECEPTACLES

### FLANGE RECEPTACLES

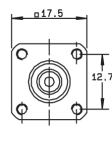


FIG. 1

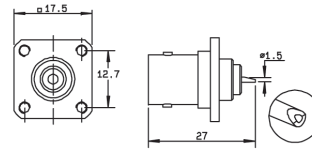


FIG. 2

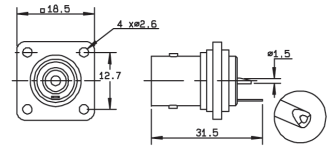


FIG. 3

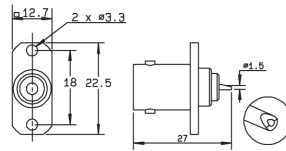


FIG. 4

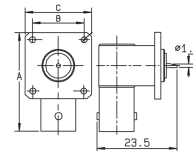
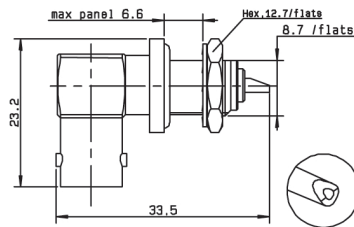


FIG. 5

PART NUMBER	FIG.	DIMENSIONS (MM)			CAPTIVE CENTER CONTACT	PANEL DRILLING	FLANGE HOLES	NOTE
		A	B	C				
R141 403 000	1	-	-	-	Yes	P07	4 x M2.5	-
R141 404 000	2	-	-	-		P06		-
R141 406 000	1	-	-	-		P07	4 x M2.6	-
R141 407 000	2	-	-	-		P06		-
R141 410 000	3	-	-	-		P02	-	Insulated Flange / Solder Tag
R141 453 000	4	-	-	-		P18	-	2 Hole Flange
R141 654 000	5	26.9	12.7	17.5	P05	4 x M2.6	Right Angle Receptacle	

## BULKHEAD RECEPTACLES

### RIGHT ANGLE BULKHEAD RECEPTACLE WITH SOLDER POT

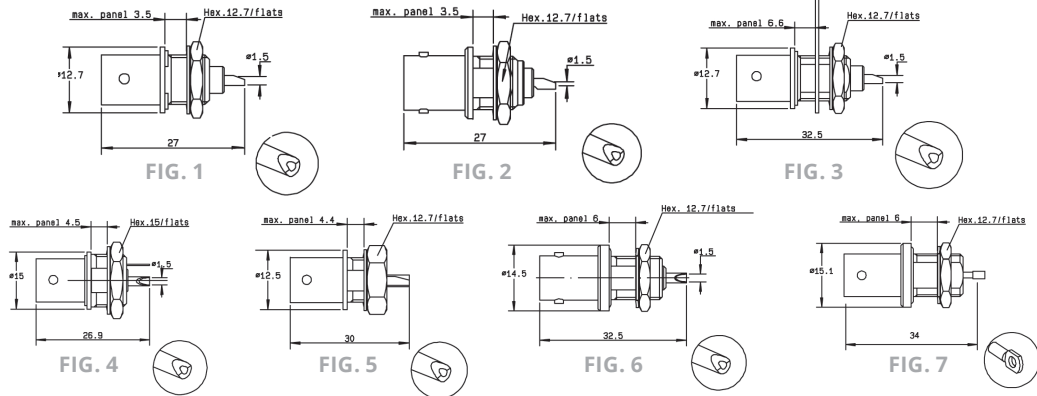


PART NUMBER	CAPTIVE CENTER CONTACT	PANEL DRILLING
R141 680 000	Yes	P14



BNC 50Ω

**STRAIGHT BULKHEAD RECEPTACLES WITH SOLDER POT**



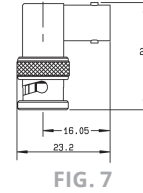
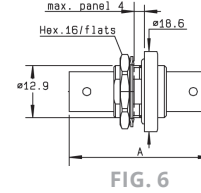
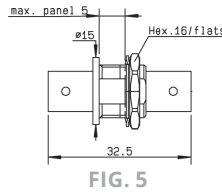
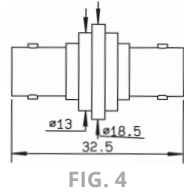
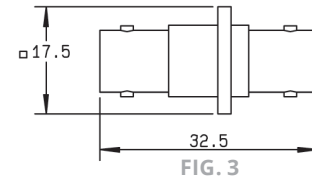
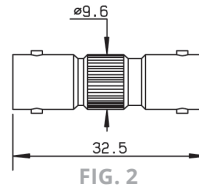
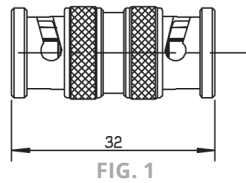
PART NUMBER	FIG.	A (LENGTH)	CAPTIVE CENTER CONTACT	PANEL DRILLING	NOTE
R141 554 000	1	-	Yes	P12	-
R141 557 000	2	-			-
R141 559 000	3	-			Solder Tag
R141 563 161	2	-			Silver Plated Center Contact / Commercial Version
R141 572 000	4	-			Insulated Receptacle + Solder Tag
R141 574 000	5	-			Commercial Version / Insulated
R141 574 161					Fully Sealed / Q200-5 Insulator
R141 603 000	6	-			Fully Sealed
R141 605 000					Not Sealed / ECO Version
R141A 605 000	3	28			P21
R141 625 000	7	-		P14	Hermetically Sealed





BNC 50Ω

**ADAPTERS**  
**IN SERIES ADAPTERS**



PART NUMBER	FIG.	CAPTIVE CENTER CONTACT	DIMENSIONS A (MM)	FLANGE HOLES	PANEL DRILLING	NOTE	
R141 703 000	1	Yes	-	-	-	Male - Male	
R141 704 000	2		-	-	-	Female - Female	
R141 710 000	3		-	-	4 x M2.5	Female - Female Square Flange	
R141 717 000	4		-	-	4 x M2.6	Female - Female Square Insulated Flange	
R141 720 000	5		-	-	-	Female - Female Bulkhead	
R141A 720 000			-	-	-	P13	Female - Female Bulkhead / ECO Version
R141 723 000			-	-	-	-	Female - Female Insulated Bulkhead
R141 723 161			-	-	-	P13 or P16	Female - Female Insulated Bulkhead / Commercial Version
R141 730 000			-	-	35.7	-	-
R141 753 000	6		-	35.3	-	P13	Female - Female Hermetically Sealed Bulkhead
R141 770 000	7		-	-	-	-	Male - Female Right Angle



BNC 50Ω

## ADAPTERS AND CAPS

### CROSS AND TEE IN SERIES ADAPTERS

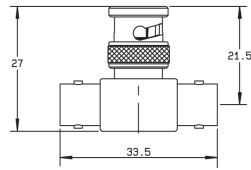


FIG. 1

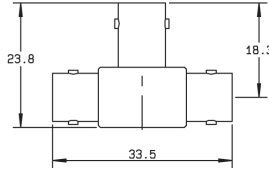


FIG. 2

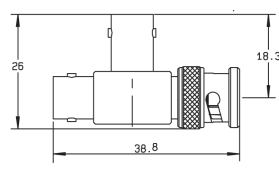


FIG. 3

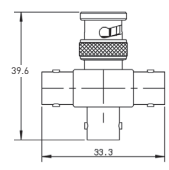


FIG. 4

PART NUMBER	FIG.	CAPTIVE CENTER CONTACT	NOTE
R141 780 000	1	Yes	Male / Female - Female Tee
R141 782 000	2		Female / Female - Female Tee
R141 789 000	3		Female / Female - Male Tee
R141 799 000	4		Male / Female - Female - Female Cross / Unit Packaging

### MALE AND FEMALE CAPS

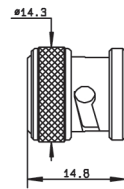


FIG. 1

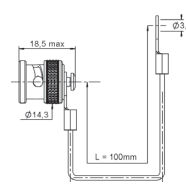


FIG. 2

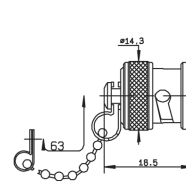


FIG. 3

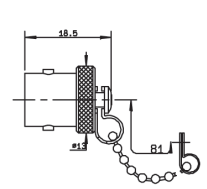


FIG. 4

PART NUMBER	FIG.	NOTE
R141 802 000	1	Male
R141 805 000	2	Male with Cord
R141 812 000	3	Male with Chain
R141 842 000	4	Female with Chain
R141 862 000	3	Male Short Circuit / With Chain



BNC 75Ω

## STRAIGHT PLUGS

### STRAIGHT PLUGS CLAMP TYPE FOR FLEXIBLE CABLES

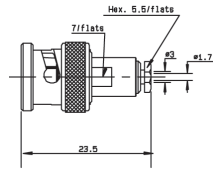


FIG. 1

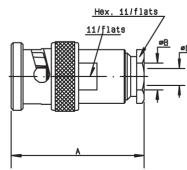


FIG. 2

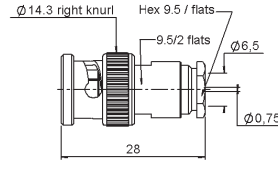


FIG. 3

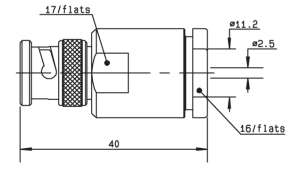


FIG. 4

CABLE GROUP	CABLE GROUP DIA.	PART NUMBER	FIG.	DIMENSIONS (MM)			CAPTIVE CENTER CONTACT	NOTE
				A	B	C		
RG179	2.6/75/S	R142 004 000	1	-	-	-	Yes	-
RG59 / RG62	6/75/S	R142 016 000	2	28	6.6	0.75		Unit Packaging
		R142 016 161	3	-	-	-	Commercial Version	
RG6A / U	8/75/S + D	R142 017 000	2	45.5	9.1	1.5	Yes	Unit Packaging
RG216 / RG11 / RG12 / RG144	10 + 11/75/S + D	R142 018 000	4	-	-	-		-
RG6A / U	GORE Cable	6500-7071-046	2	23.87	4.31	2.79		-

### STRAIGHT PLUGS FULL CRIMP TYPE FOR FLEXIBLE CABLES

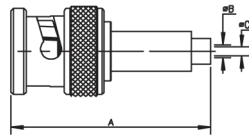


FIG. 1

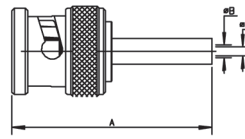


FIG. 2

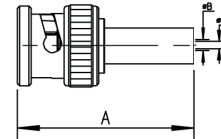


FIG. 3

CABLE GROUP	CABLE GROUP DIA.	PART NUMBER	FIG.	DIMENSIONS (MM)			CAPTIVE CENTER CONTACT	NOTE
				A	B	C		
RG179	2.6/75/S	R142 076 000	1	31	1.8	0.4	Yes	-
		R142 076 161	3					Commercial Version
		R142A 076 161						Single Piece Body / ECO Version
BT3002	2.6/75/D	R142 081 120	2	29	2.1	0.34	Yes	Single Piece Body
		R142 081 130		29	2.1	0.34		Single Piece Body / Unit Packaging
		R142A 081 130		29	2.1	0.34		Single Piece Body / ECO Version
ST212	-	R142 091 161	3	30	2.1	0.6	Yes	-
BT2002	5/75/D	R142 083 000	2	27.3	5.5	0.75	Yes	Single Piece Body
RG59 / RG62	6/75/S	R142 085 000		28	6.6			0.75
		R142 085 161	3	28	3.9	No	Single Piece Body / ECO Version	
		R142A 085 161		29	4		0.8	Single Piece Body / Commercial Version
-	7/75/S	R142 086 161	2	30.8	5.15	1.35	Yes	Single Piece Body
-	7.5/75/D	R142 090 000		28	5.25	0.85		Single Piece Body
RG11 / RG12 / RG144	10/75/S	R142 095 000		28	11.05	1.35		Single Piece Body



BNC 75Ω

## RIGHT ANGLE PLUGS AND JACKS

### RIGHT ANGLE PLUGS CLAMP TYPE FOR FLEXIBLE CABLES

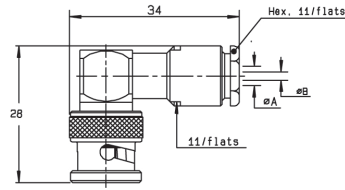


FIG. 1

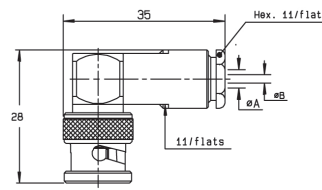


FIG. 2

CABLE GROUP	CABLE GROUP DIA.	PART NUMBER	FIG.	DIMENSIONS (MM)		CAPTIVE CENTER CONTACT
				A	B	
RG179	2.6/75/S	R142 154 000	1	3.1	0.6	Yes
RG59 / RG62	6/75/S	R142 157 000	2	6.6	0.75	

### RIGHT ANGLE PLUGS FULL CRIMP TYPE FOR FLEXIBLE CABLES

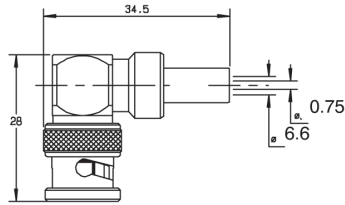


FIG. 1

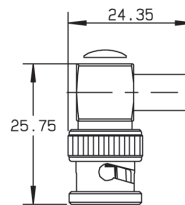
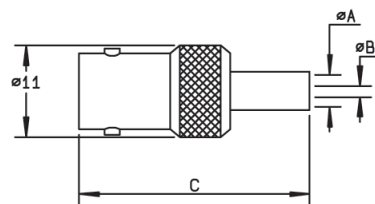


FIG. 2

CABLE GROUP	CABLE GROUP DIA.	PART NUMBER	FIG.	CAPTIVE CENTER CONTACT	NOTE
RG59 / RG62	6/75/S	R142 184 000	1	Yes	-
		R142 184 161	2		Commercial Version

### STRAIGHT JACKS FULL CRIMP TYPE FOR FLEXIBLE CABLES



CABLE GROUP	CABLE GROUP DIA.	PART NUMBER	DIMENSIONS (MM)			CAPTIVE CENTER CONTACT	NOTE
			A	B	C		
RG179	2.6/75/S	R142 217 000	1.75	0.4	32.5	Yes	-
RG59 / RG62	6/75/S	R142 242 000	6.6	0.75	29.5		Single Piece Body
		R142 242 161			29		Single Piece Body / Commercial Version



BNC 75Ω

## JACKS AND BULKHEAD JACKS

### STRAIGHT SQUARE FLANGE JACKS CLAMP TYPE FOR FLEXIBLE CABLES

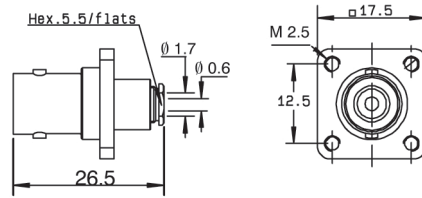
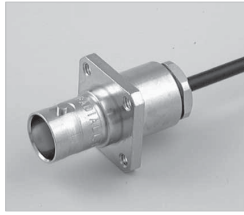


FIG. 1

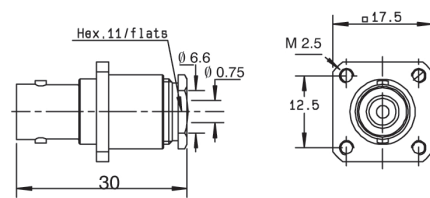
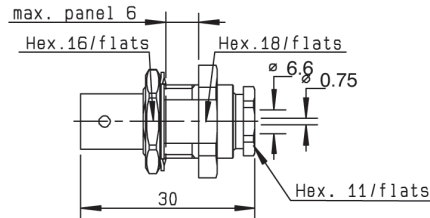


FIG. 2

CABLE GROUP	CABLE GROUP DIA.	PART NUMBER	FIG.	CAPTIVE CENTER CONTACT	PANEL DRILLING	NOTE
RG179	2.6/75/S	R142 202 000	1	Yes	P01	Unit Packaging
RG59 / RG62	6/75/S	R142 268 000	2			

### STRAIGHT BULKHEAD JACK CLAMP TYPE FOR FLEXIBLE CABLES



CABLE GROUP	CABLE GROUP DIA.	PART NUMBER	CAPTIVE CENTER CONTACT	PANEL DRILLING	NOTE
RG59 / RG62	6/75/S	R142 329 000	Yes	P11	Panel Sealed

### STRAIGHT BULKHEAD JACKS CRIMP TYPE FOR FLEXIBLE CABLES

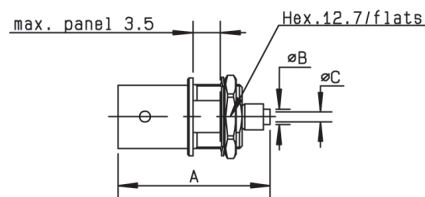


FIG. 1

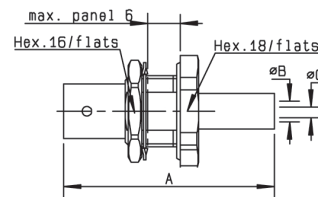


FIG. 2

CABLE GROUP	CABLE GROUP DIA.	PART NUMBER	FIG.	DIMENSIONS (MM)			CAPTIVE CENTER CONTACT	PANEL DRILLING	NOTE
				A	B	C			
RG179	2.6/75/S	R142 306 500	1	26	2.95	0.4	Yes	P14	Reverse Crimping / Commercial Version
		R142A 306 500					No		Reverse Crimping / ECO Version
		R142 306 503					Yes		Reverse Crimping
BT3002	3.6/75/D	R142 331 011	2	38	1.75	0.4	-	P11 or P16	Panel Sealed / Silver Plated
RG59 / RG62	6/75/S	R142A 325 106		36	2.1	0.5	No		Panel Sealed / ECO Version
		R142 334 161		35	6.6	0.75	Yes		Panel Sealed / Commercial Version
		R142A 334 161	35	3.8	0.7			Panel Sealed / ECO Version	



BNC 75Ω

## RECEPTACLES

### RECEPTACLES WITH SOLDER POT

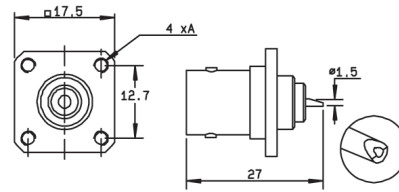


FIG. 1

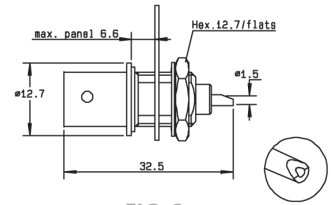
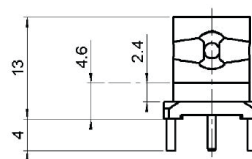
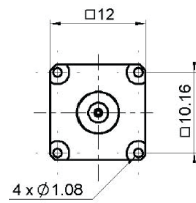


FIG. 2

PART NUMBER	FIG.	CAPTIVE CENTER CONTACT	PANEL DRILLING	FLANGE HOLES A	NOTE
R142 412 000	1	Yes	P06	4 x M2.5	Square Flange + Unit Packaging
R142 562 000	2		P14	-	Bulkhead Female Receptacle / Unit Packaging

### STRAIGHT PCB FEMALE RECEPTACLES



PART NUMBER	CAPTIVE CENTER CONTACT	PANEL DRILLING
R142 426 000	Yes	P08

### RIGHT ANGLE PCB FEMALE RECEPTACLE

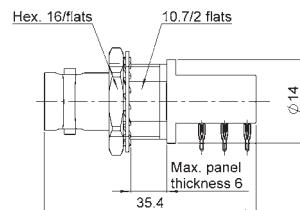


FIG. 1

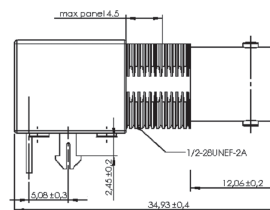


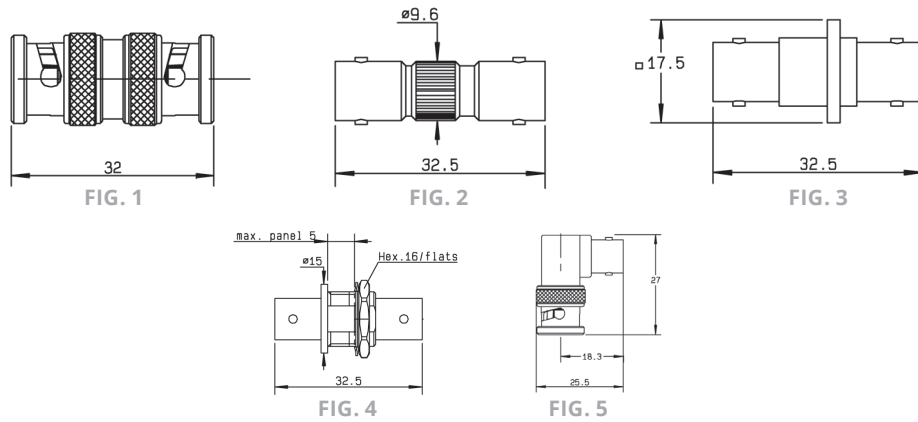
FIG. 2

PART NUMBER	FIG.	CAPTIVE CENTER CONTACT	PANEL DRILLING	NOTE
R142 684 130	1	Yes	P09 and P16	Press-Fit Pins
R142 676 430	2		Yes	Harpoon Legs



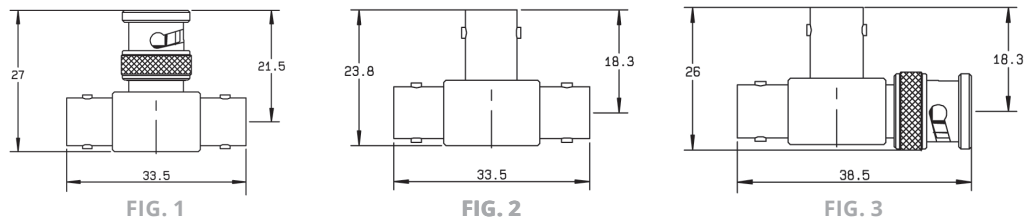
BNC 75Ω

## ADAPTERS IN SERIES ADAPTERS



PART NUMBER	FIG.	CAPTIVE CENTER CONTACT	PANEL DRILLING	NOTE
R142 703 000	1	Yes	-	Male - Male
R142 704 000	2		-	Female - Female
R142 710 000	3		P01	Female - Female Square Flange
R142 720 000	4		P11	Female - Female Bulkhead
R142 723 000	4		P11 or P16	Female - Female Insulated Bulkhead
R142 770 000	5		-	Male - Female Right Angle

## TEE IN SERIES ADAPTERS



PART NUMBER	FIG.	CAPTIVE CENTER CONTACT	NOTE
R142 780 000	1	Yes	Male / Female - Female Tee
R142 782 000	2		Female / Female - Female Tee
R142 789 000	3		Female / Female - Male Tee



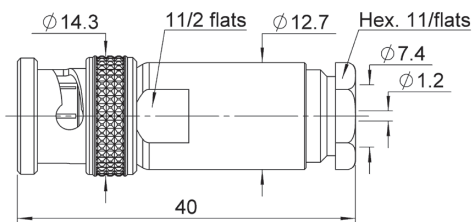
BNC-TRX

### CHARACTERISTICS

TEST / CHARACTERISTICS	VALUES / REMARKS	
Frequency Range	DC - 10 GHz	
Impedance	50Ω	
Working Voltage	500 Vrms	
Dielectric Withstanding Voltage • Between Center Conductor and Inner Screen • Between Inner Screen and Outer Screen	Unmated Connector 1500 Vrms 1000 Vrms	Mated Connector 3000 Vrms 1000 Vrms
Temperature Range	-55 °C / +125 °C	

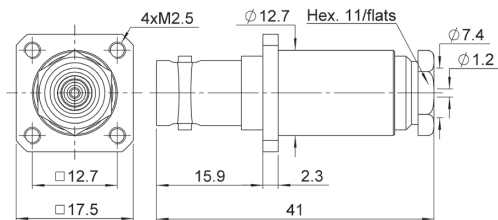
### PLUG, JACK AND RECEPTACLE

#### STRAIGHT PLUG CLAMP TYPE



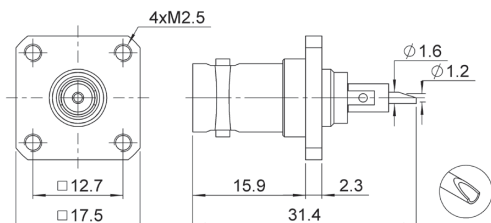
CABLE GROUP DIA.	PART NUMBER
7.3/50/D	R266 010 000

#### STRAIGHT JACK CLAMP TYPE



CABLE GROUP DIA.	PART NUMBER	PANEL DRILLING
7.3/50/D	R266 260 000	P10

#### RECEPTACLE



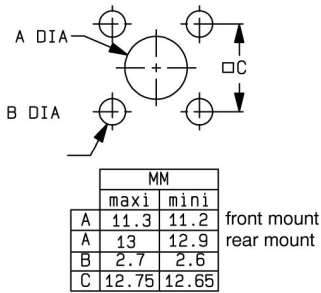
PART NUMBER	PANEL DRILLING
R266 403 000	P10



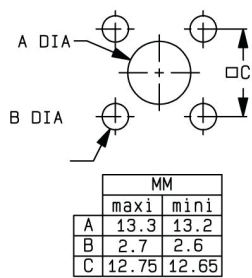
BNC

**PANEL DRILLING**

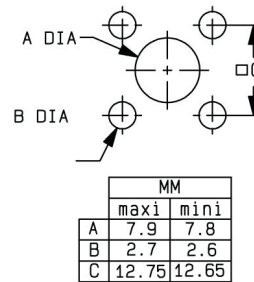
**P01**



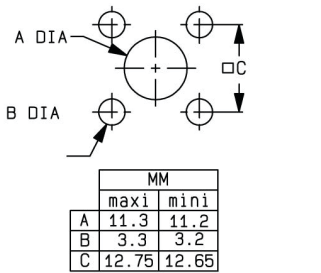
**P02**



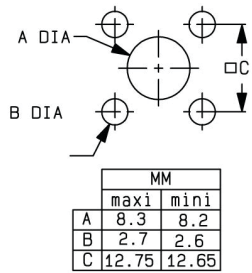
**P03**



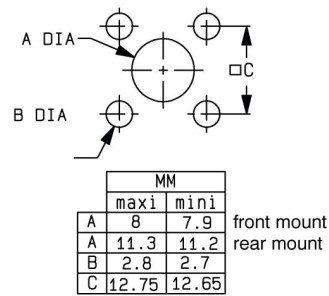
**P04**



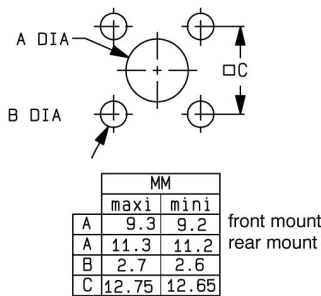
**P05**



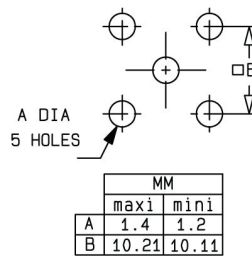
**P06**



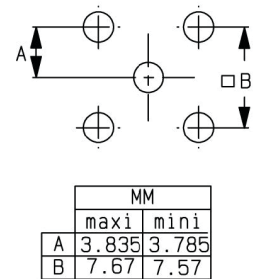
**P07**



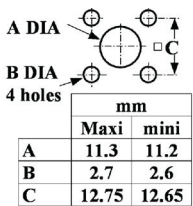
**P08**



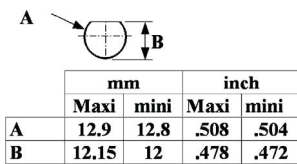
**P09**



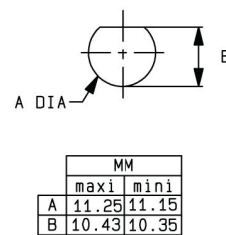
**P10**



**P11**



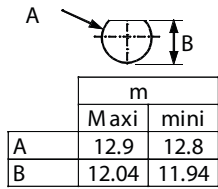
**P12**



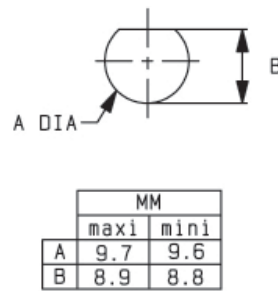


BNC

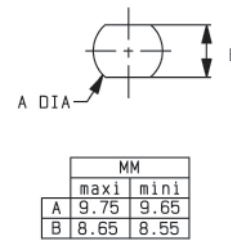
P13



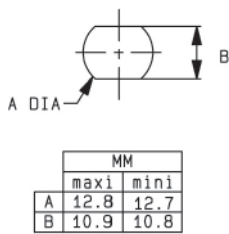
P14



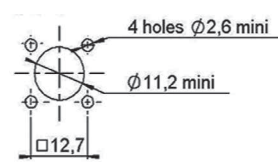
P15



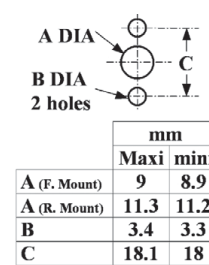
P16



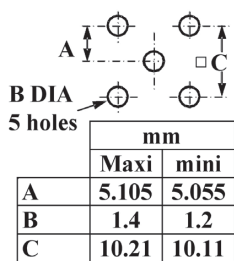
P17



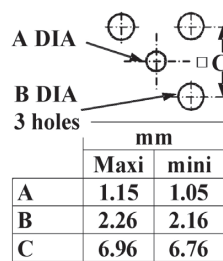
P18



P19



P20



P21

