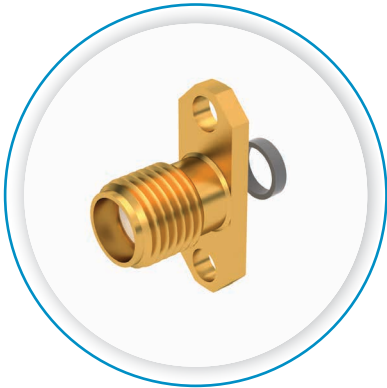
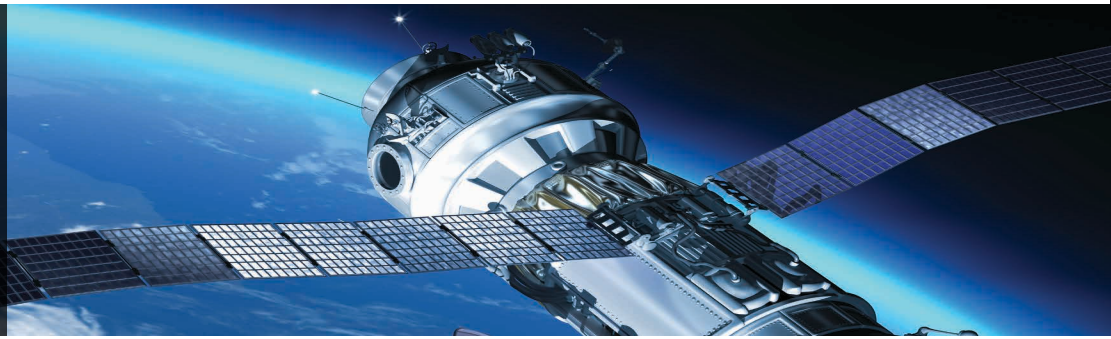




# HERMETIC RANGE

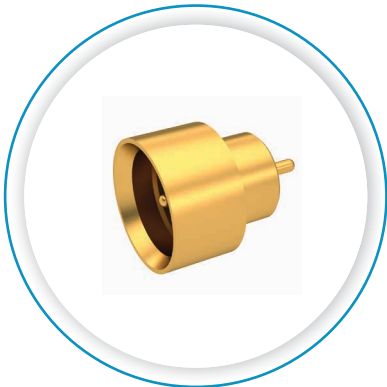
The most advanced and reliable level of hermeticity



To meet the most stringent performance requirements of specific applications, Radiall has designed products with the highest level of hermeticity. They ensure low RF leakage, even in changing and harsh environments.

Radiall's hermetically sealed RF connectors carry microwave signals in and out of electronic packages and ensure that no outside elements, such as liquid, air or gas, can enter or leak through. These reliable products maintain the best electrical performance without RF leakage.

Radiall's hermetic connectors meet the needs of harsh environments that require products resistant to high temperatures, corrosion, shock, vibration, etc. The design provides durable connectors with excellent mechanical strength and no degradation or aging over time.



Adaptive to pressure differences



Stable over time



Resistant to extreme & changing temperatures



Resistant to external interferences, like corrosion

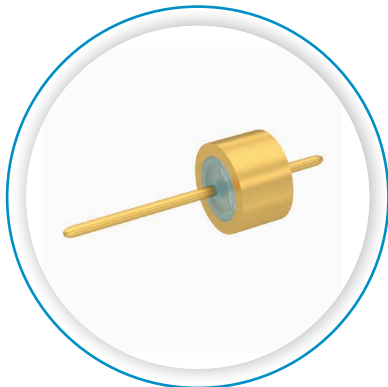


Reliable against shocks & vibrations

Radiall's hermetic product line offers a wide range of standard and custom connectors to provide excellent customer solutions. Hermetic products are available for the SMA and SMA 2.9, SMC, SMB, BMA, BNC, TNC, N, C, SMPM, SMP, QRE and 2.4 mm families.

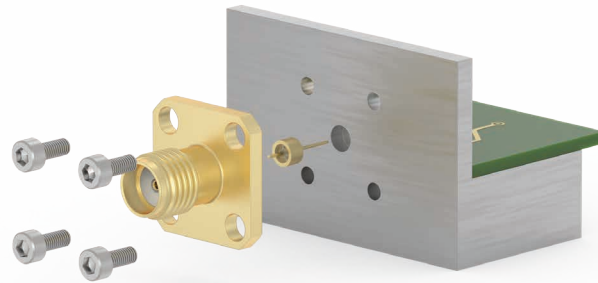
Designed to fit applications requiring an extremely rugged and reliable seal in high pressure environments, Radiall hermetic connectors are perfectly suited for use in underground applications, vacuum chambers, laboratory equipment and commercial and military aircraft.





*Synergy hermetic connectors feature glass-to-metal technology that provides a truly reliable hermeticity.*

Synergy hermetic connectors are designed with a fused glass-to-metal seal that is soldered into the connector body to seal the connector internally. This technology creates a perfect barrier between two different environments. Low-loss special glass is used for best electrical performance and provides optimal results when exposed to extreme temperature shocks, especially when moving to high temperatures and pressure changes.



*Example of insertion of a hermetic solution*

#### FEATURES & BENEFITS

- High level of hermeticity : leakage rate below 10<sup>-8</sup> atm/cm<sup>3</sup>/sec
- High level of EMI shielding
- Up to 65 Ghz

#### APPLICATIONS

- Satellites
- Measuring/laboratory equipment
- Civil and military airborne applications