



Mob: +91 7217885948

www.rfconnector.in

pradeep@rfconnector.in



www.rfconnector.in



SMB/SMB-LOCK/SMC

R114/R117/R112



Mob: +91 7217885948

www.rfconnector.in

pradeep@rfconnector.in



www.rfconnector.in

Plot no. 845, DSIIDC Industrial Area KHASRA NO. 33/23 (0-7) & 37/4 (0-10) Gali no. 6, near Harnandi dharam kanta
Mundka Industrial Area, New Delhi, Delhi, 110041



Section 6 Table of Contents

SMB

Introduction..... 6-4 to 6-5
Interface.6-6
Characteristics6-7 to 6-8
Plugs6-8 to 6-11
Jacks 6-10 to 6-12
Bulkhead Jacks 6-12 to 6-14
Receptacles. 6-14 to 6-15
PCB Receptacles. 6-15 to 6-16
Adapters. 6-17
Panel Drilling6-22
Assembly Instructions.6-22

SMB-LOCK

Introduction..... 6-18
Interface. 6-18
Characteristics 6-19
Plugs6-20

SMB LIMITED DETENT (SMB-A)

Receptacles.6-21

SMB SLIDE-ON (SUBGLIS)

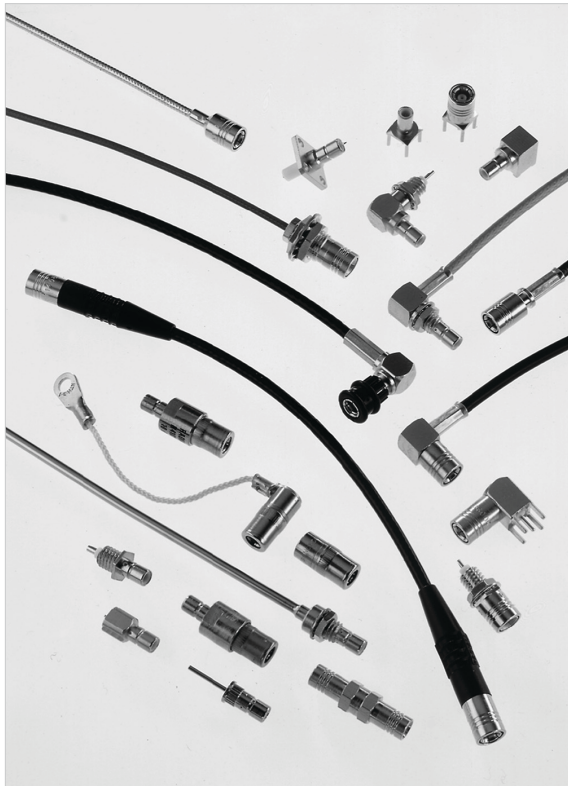
Plugs and Receptacles.....6-21

SMC

Introduction.....6-23
Interface.6-23
Characteristics6-24
Plugs6-25
Jacks 6-25 to 6-27
Receptacles.....6-27 to 6-28
Adapters.6-28
Panel Drilling6-28



SMB



50Ω	DC - 4 GHz
-----	------------

INTRODUCTION

GENERAL

- Subminiature coaxial connectors
- Snap-on coupling
- Plugs have female contacts
- Jacks have male contacts
- Low weight and reduced outline dimensions
- Captive contact (except contrary specification)

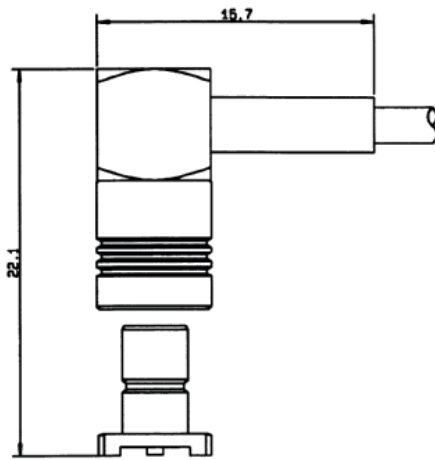
APPLICABLE STANDARDS

- SMB series MIL-C-39012
MIL-C-39012/67-72
- IEC 169-10
- CECC 22130
- BS 9210 N0007

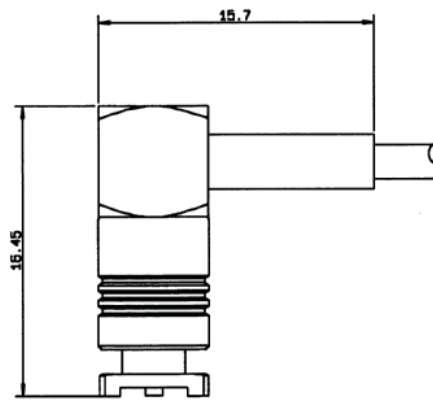
APPLICATIONS

- Mobile communication systems
- Civil and military telecommunications
- Aeronautics
- Automotive

PROFILE



UNMATED



MATED



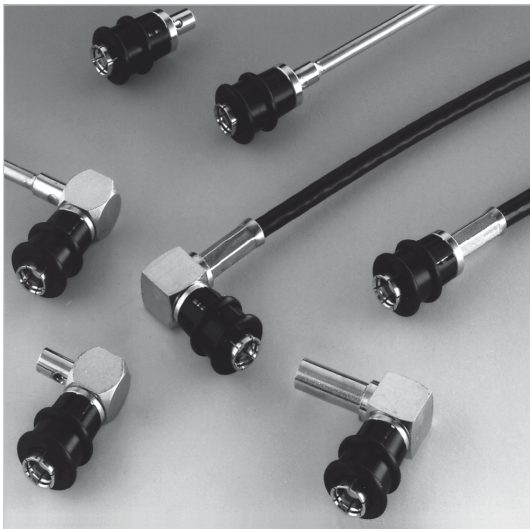
SMB

SMB snap-on subminiature coaxial connectors provide a fast and reliable connection for high density packaging for applications up to 4 GHz.

Radiall offers a very large range of SMB connectors, including cable plugs and jacks with bulkhead and panel mount configurations, bulkhead and panel mount receptacles; through hole, SMT and edge card receptacles and in-series and between series adapters.

SMB series also features versions with lower mating forces than standard. Four types of interconnection mechanisms are available:

- **SMB: Standard** snap-on connection
The design permits quick engagement and disengagement.
- **SMB limited detent (SMB-A):** Snap-on connection with low mating force
The design permits quick engagement and disengagement, and is suitable for printed circuit boards. Radiall offers a range of PCB and bulkhead receptacles with female center contact. The SMB-A receptacles are completely intermateable with standard SMB jacks.
- **SMB slide-on (SUBGLIS):** Slide-on connection
The design is suitable for back plane and blind mate applications. In this case, we recommend the association of a mobile connector (floating jack / receptacle) with a fixed connector (panel plug / jack, receptacle). The SUBGLIS connectors are completely intermateable with standard SMB and SMB-A connectors and for that, they can be used for test applications.
- **SMB Lock:**
Plugs (with female center contact) have a coupling nut allowing a reliable lock-on connection (50 N min). This range allows a visual control of the locking system.

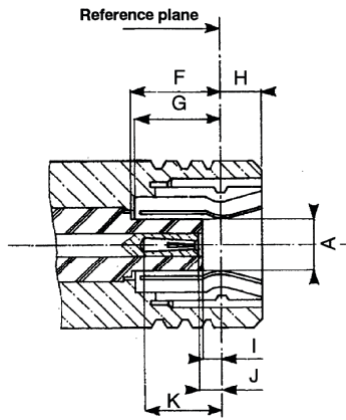


These four types of SMB connectors have the same electrical performance.

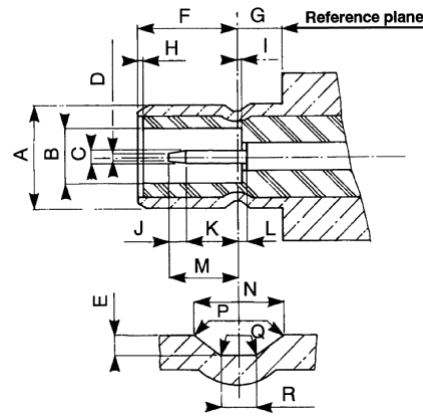


SMB

INTERFACE



PLUG
(with Female Contact)



JACK
(with Male Contact)

LETTER	MM		INCH	
	MIN	MAX	MIN	MAX
A DIA	-	2.06	-	.081
F	3.58	-	.141	-
G	3.58	-	.141	-
H	-	1.63	-	.064
I	0.18	-	.007	-
J	0.18	0.94	.007	.037
K	2.97	-	.117	-

LETTER	MM		INCH	
	MIN	MAX	MIN	MAX
A DIA	-	3.71	-	.146
B DIA	2.08	-	.082	-
C DIA	0.48	0.53	.019	.021
D DIA	-	0.25	-	.010
E	0.15	0.25	.006	.010
F	3.33	3.58	.131	.141
G	1.65	-	.065	-
I	-	0.18	-	.007
J	0.25	-	.010	-
K	1.32	-	.052	-
L	-	0.18	-	.007
M	-	2.97	-	.117
N	0.69	0.94	.027	.037
P	0.05	0.15	.002	.006
Q	-	0.13	-	.005
R	0.28	0.38	.011	.015

CLAMP TYPE CONNECTORS: R 114 xxx 000 = braid retention with cylindrical gasket
 R 114 xxx 133 = braid retention with V groove gasket



SMB

CHARACTERISTICS

TEST / CHARACTERISTICS	MIL-C-39012 A	VALUES / REMARKS
------------------------	---------------	------------------

ELECTRICAL CHARACTERISTICS

Impedance			-	50Ω		
Frequency Range			-	DC - 4 GHz		
V.S.W.R. (typ.) • Straight Models	Cable Group:	Frequency	3-14	1 GHz	2.5 GHz	4 GHz
		.085"	-	1.12	1.22	1.33
• Right Angle Models		2	-	1.10	1.22	1.33
		2.6	-	1.12	1.22	1.35
• Right Angle Models		.085"	-	1.10	1.18	1.26
		2	-	1.10	1.20	1.25
Insertion Loss (typ.) dB • Straight Models	Cable Group:	Frequency	3-27			
		.085"	-	0.05	0.07	0.15
• Right Angle Models		2	-	0.05	0.10	0.25
		2.6	-	0.05	0.05	0.05
• Right Angle Models		.085"	-	0.05	0.07	0.12
		2	-			
RF Leakage			3-26	-55 dB min from 2 to 3 GHz		
Insulation Resistance			3-11	1000 MΩ min		
Contact Resistance			3-16	Initial	After Test	
• Center Contact (mΩ)			-	6	8	
• Outer Contact (mΩ)			-	1	1.5	
Working Voltage						
• Cable Group			-	2/50	2.6/50	
• At Sea Level			-	250 V rms	335 V rms	
• At 70000 ft (21000 m)			-	60 V rms	85 V rms	
Dielectric Withstanding Voltage						
• Cable Group			3-17	2/50	2.6/50	
• At Sea Level			-	750 V rms	1000 V rms	
• At 70000 ft (21000 m)			-	185 V rms	250 V rms	
RF Withstanding Voltage (5 MHz Sine Wave)			3-23			
• Cable Group			-	2/50	2.6/50	
• At Sea Level			-	500 V rms	700 V rms	

MECHANICAL CHARACTERISTICS

Durability		3-15	500 Matings
Mating / Unmating		3-5-1	Axial force: 62 N max (14 Lbf)
Cabling Retention Force	Cable Group:	3-24	58 N (13Lbf) 110 N (25Lbf)
	• 2/50 • 2.6/50		
Center Contact Retention		-	Axial: 10 N (2.25 Lbf)

ENVIRONMENTAL CHARACTERISTICS

Temperature Range			
• Standard Models		-	-65 °C / + 165 °C
• Hermetic Sealed Models		-	-65 °C / +165 °C
• Models for Semi-Rigid Cables		-	-65 °C / +105 °C
Combined Climate Tests		-	MIL-STD-202, Method 102, Condition C
Thermal Shock		3-20	MIL-STD-202, Method 107, Condition B
High Temperature Endurance		-	MIL-STD-202, Method 108
Corrosion (Salt Spray)		3-13	MIL-STD-202, Method 101, Condition B, 5%
Vibrations		3-18	MIL-STD-202, Method 204, Condition B, 15g
Shocks		3-19	MIL-STD-202, Method 213, Condition B, 75g
Low Pressure		3-22	MIL-STD-202, Method 105, Condition C
Hermetic Seal		-	Applied Vacuum 10 ⁻⁶ mm of Hg (Torr) Leakage Rate < 10 ⁻⁶ atm/cm ³ /s

MATERIALS AND PLATING

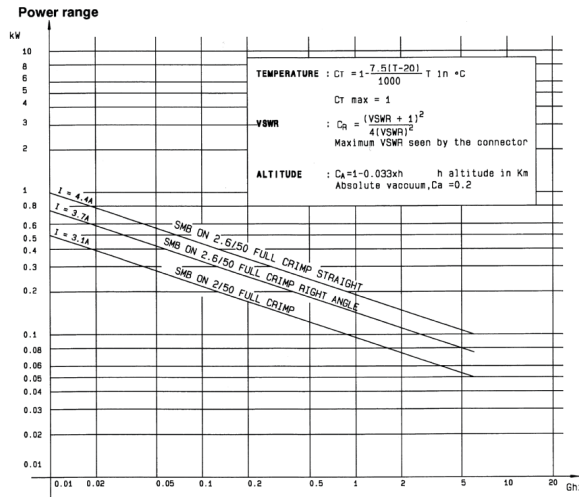
	Material	Plating
Body and Center Pin Contact	Half Hard Brass as per QQ-B-626	Gold or Nickel (Body)
Center Socket Contact	Beryllium Copper as per QQ-C-530	Gold (Center Contact)
Ferrules	Brass	-
Insulators	PTFE Teflon	-
Gaskets	Silicone Elastomer	-

All dimensions are given in mm.
Standard packaging: 100 pieces



SMB

POWER RATING



PLUGS

STRAIGHT PLUGS CRIMP TYPE FOR FLEXIBLE CABLES

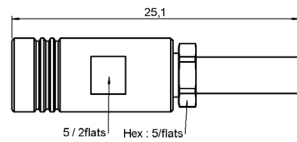


FIG. 1

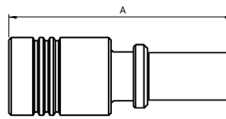


FIG. 2

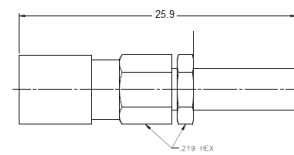


FIG. 3

CABLE GROUP	CABLE GROUP DIA.	PART NUMBER	FIG.	DIMENSIONS A (MM)	CAPTIVE CENTER CONTACT	FINISH	NOTE
RG178 / RG196	2/50/S	R114 073 000	1	-	Yes	Gold	-
RG174 / RG316 / RG179	2.6/50+75/S	R114 075 000		-			
		R114 082 000	19.8				
RD316	2.6/50/D	R114 083 000	2	18.4			Full Crimp
RG188 / RG179 / RG187 / RG316 / RG174	2.6/50+75/S	R114 086 200	3	21.35		-	
RG178 / RG196	2/50/S	2002-1571-002		-			
		2002-7571-002		-			
RD178	2/50/D	2002-1571-005		-			
		2002-7571-005		-			
RG174 / RG316	2.6/50/S	2002-1571-003		-			
		2002-7571-003		-			
RD316	2.6/50/D	2002-1571-019		-			
		2002-7571-019	-				



SMB

PLUGS AND JACKS

STRAIGHT PLUGS CLAMP TYPE FOR FLEXIBLE CABLES

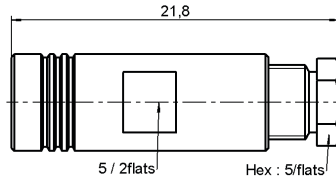
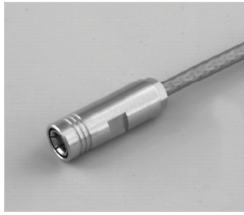


FIG. 1

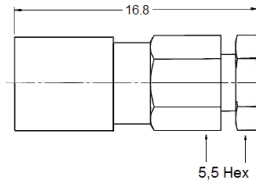


FIG. 2

CABLE GROUP	CABLE GROUP DIA.	PART NUMBER (GOLD)	PART NUMBER (NICKEL)	FIG.	CAPTIVE CENTER CONTACT
RG178 / RG196	2/50/S	R114 003 000	N/A	1	Yes
RG174 / RG316 / RG179	2.6/50+75/S	R114 005 000			
RG178 / RG196	2/50/S	2002-1551-002	2002-7551-002	2	
RD178	2/50/D	2002-1551-005	-		
RG174 / RG316	2.6/50/S	2002-7551-003	2002-7551-003		
RD316	2.6/50/D	2002-7551-019	2002-7551-019		

STRAIGHT PLUG FOR SEMI RIGID CABLES

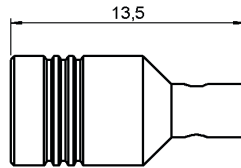


FIG. 1

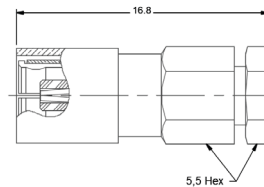


FIG. 2

CABLE GROUP	CABLE GROUP DIA.	PART NUMBER (GOLD)	PART NUMBER (NICKEL)	FIG.	CAPTIVE CENTER CONTACT	NOTE
RG405	.085"	R114 053 000	-	1	No	Solder Type
		2002-1541-010	2002-7541-010		Yes	Solder Clamp
RG402	.141"	2002-1541-003	2002-7541-009	2		



SMB

RIGHT ANGLE PLUGS AND JACKS CRIMP TYPE FOR FLEXIBLE CABLES

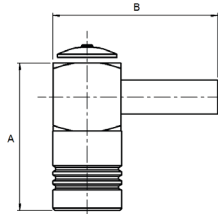
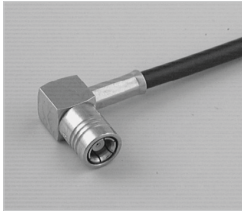


FIG. 1

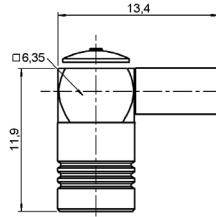


FIG. 2

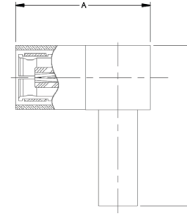


FIG. 3

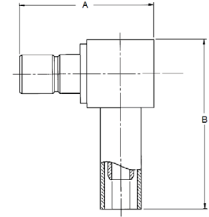


FIG. 4

CABLE GROUP	CABLE GROUP DIA.	PART NUMBER (GOLD)	PART NUMBER (NICKEL)	FIG.	DIMENSIONS (MM)		CAPTIVE CENTER CONTACT	NOTE
					A	B		
RG178 / RG196	2/50/S	R114 183 000		1	13.7	15.3	Yes	-
RG174 / RG316 / RG179	2.6/50+75/S	R114 185 000	N/A	2	-	-		Short Version
		R114 186 000		1	13.7	15.3		-
		R114 186 100			15.1	15.4		Full Crimp
		R114 187 000			13.7			-
RD316	2.6/50/D	R114 182 000						-
RG178 / RG196	2/50/S	2105-1521-002	2105-7521-002	3	13.2	16		-
		2141-1521-002	-	4	12.7			-
RD178	2/50/D	2105-1521-005	2105-7521-005	3	13.2			-
RG174 / RG316 / RG179	2.6/50/S	2105-1521-003	2105-7521-003	3	12.7			-
		2141-1521-003	2141-7521-003	4	12.7		-	
RD316	2.6/50/D	2105-1521-019	2105-7521-019	3	13.2		-	
		2141-1521-019	2141-7521-019	4	12.7		-	



SMB

RIGHT ANGLE PLUGS AND JACKS CLAMP TYPE FOR FLEXIBLE CABLES

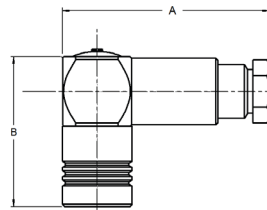
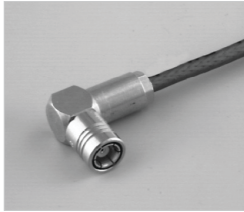


FIG. 1

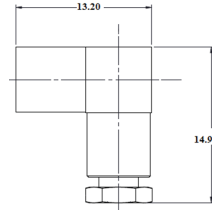


FIG. 2

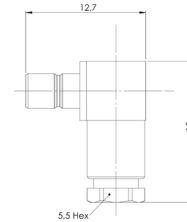


FIG. 3

CABLE GROUP	CABLE GROUP DIA.	PART NUMBER (GOLD)	PART NUMBER (NICKEL)	FIG.	DIMENSIONS (MM)		CAPTIVE CENTER CONTACT
					A	B	
RG178 / RG196	2/50/S	R114 163 000	N/A	1	19	13.7	Yes
	2.2/50/D	R114 163 420			16.7		
RG174 / RG316 / RG179	2.6/50+75/S	R114 165 000			19		
RG178 / RG197	2/50/S	2005-1551-002	2005-7551-002	2	-	-	
		2041-1551-002	-	3	-	-	
RG174 / RG316 / RG179	2.6/50/S	2005-1551-003	2005-7551-003	2	-	-	
		2041-1551-003	2041-7551-003	3	-	-	
RD316	2.6/50/D	2005-1551-019	-	2	-	-	

RIGHT ANGLE PLUGS AND JACKS FOR SEMI RIGID CABLES

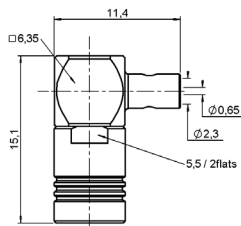


FIG. 1

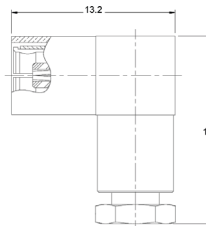


FIG. 2

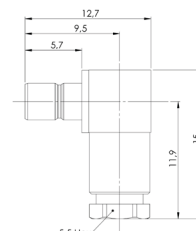


FIG. 3

CABLE GROUP	CABLE GROUP DIA.	PART NUMBER (GOLD)	PART NUMBER (NICKEL)	FIG.	CAPTIVE CENTER CONTACT	NOTE
RG405	.085"	R114 169 000	N/A	1	Yes	Cable Bending Required Solder Type for Semi Rigid Cable Solder Clamp
		2005-1541-010	2005-7541-010	2		
		2041-1541-010	2041-7541-010	3		
RG402	.141"	2005-1541-009	2005-7541-009	2	Yes	Solder Clamp
		2041-1541-009	-	3		



SMB

JACKS AND BULKHEAD JACKS

STRAIGHT JACKS CRIMP TYPE FOR FLEXIBLE CABLES

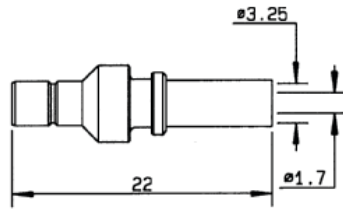


FIG. 1

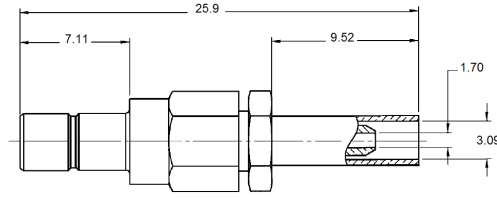


FIG. 2

CABLE GROUP	CABLE GROUP DIA.	PART NUMBER (GOLD)	PART NUMBER (NICKEL)	FIG.	CAPTIVE CENTER CONTACT	NOTE
RG174 / RG316 / RG179	2.6/50+75/S	R114 238 000	-	1	Yes	Full Crimp
RG178 / RG197	2/50/S	2001-1571-002	2001-7571-002	2		Crimp Type
RD178	2/50/D	2001-1571-005	-			
RG174 / RG316 / RG179	2.6/50/S	2001-1571-003	2001-7571-003			
RD316	2.6/50/D	2001-1571-019	2001-7571-019			

STRAIGHT BULKHEAD JACKS CRIMP TYPE FOR FLEXIBLE CABLES

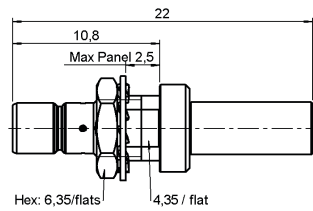


FIG. 1

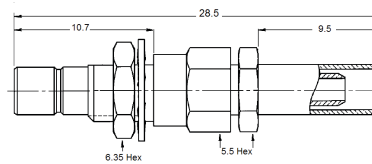


FIG. 2

CABLE GROUP	CABLE GROUP DIA.	PART NUMBER (GOLD)	PART NUMBER (NICKEL)	FIG.	CAPTIVE CENTER CONTACT	PANEL DRILLING	NOTE
RG174 / RG316 / RG179	2.6/50+75/S	R114 313 000	N/A	1	Yes	P08	Rear Mount / Fill Crimp
RG178 / RG197	2/50/S	2003-1571-002	2003-7571-002	2			
RD178	2/50/D	2003-1571-005	2003-7571-005				
RG174 / RG316 / RG179	2.6/50/S	2003-1571-003	2003-7571-003				
RD316	2.6/50/D	2003-1571-019	2003-7571-019				



SMB

BULKHEAD JACKS

STRAIGHT BULKHEAD JACKS CLAMP TYPE FOR FLEXIBLE CABLES

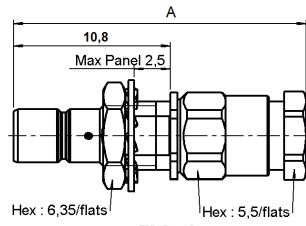


FIG. 1

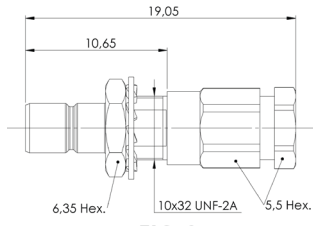


FIG. 2

CABLE GROUP	CABLE GROUP DIA.	PART NUMBER (GOLD)	PART NUMBER (NICKEL)	FIG.	DIMENSIONS A (MM)	CAPTIVE CENTER CONTACT	PANEL DRILLING	NOTE
RG178 / RG196	2/50/S	R114 303 000	N/A	1	25.3	Yes	P08	Rear Mount
		R114 303 313			20.1			
RG174 / RG316 / RG179	2.6/50+75/S	R114 305 000		25.3				
RG178 / RG197	2/50/S	2003-1551-002	2003-7551-002	2	-			
RD178	2/50/D	2003-1551-005	-		-			
RG174 / RG316 / RG179	2.6/50/S	2003-1551-003	2003-7551-003		-			
RD316	2.6/50/D	2003-1551-019	-		-			

STRAIGHT BULKHEAD JACK SOLDER TYPE FOR SEMI-RIGID CABLE

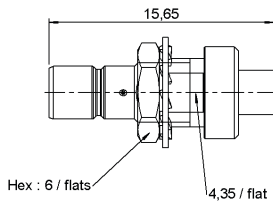
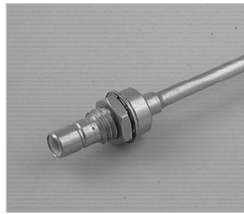


FIG. 1

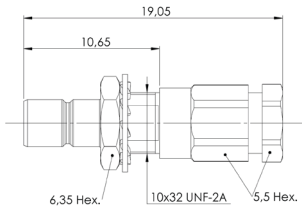
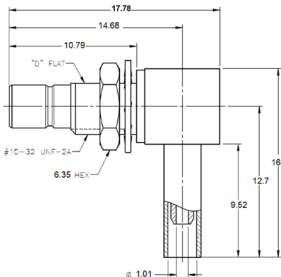


FIG. 2

CABLE GROUP	CABLE GROUP DIA.	PART NUMBER (GOLD)	PART NUMBER (NICKEL)	FIG.	CAPTIVE CENTER CONTACT	PANEL DRILLING	NOTE
RG405	.085"	R114 222 000	-	1	Yes	P08	-
		2003-1541-010	2003-7541-010	2			
RG402	.141"	2003-1541-009	-				Solder Clamp Type

RIGHT ANGLE BULKHEAD CRIMP TYPE FOR FLEXIBLE CABLES

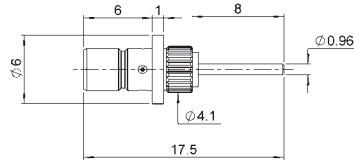


CABLE GROUP	CABLE GROUP DIA.	PART NUMBER (GOLD)	PART NUMBER (NICKEL)	CAPTIVE CENTER CONTACT	PANEL DRILLING
RG178 / RG197	2/50/S	2106-1521-002	2106-7521-002	Yes	P08
RD178	2/50/D	2106-1521-005	-		
RG174 / RG316 / RG179	2.6/50/S	2106-1521-003	2106-7521-003		
RD316	2.6/50/D	2106-1521-019	2106-7521-019		



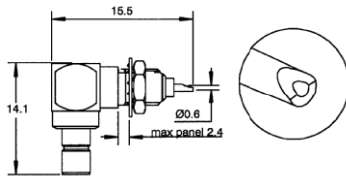
SMB

STRAIGHT PRESS IN RECEPTACLE (MALE)



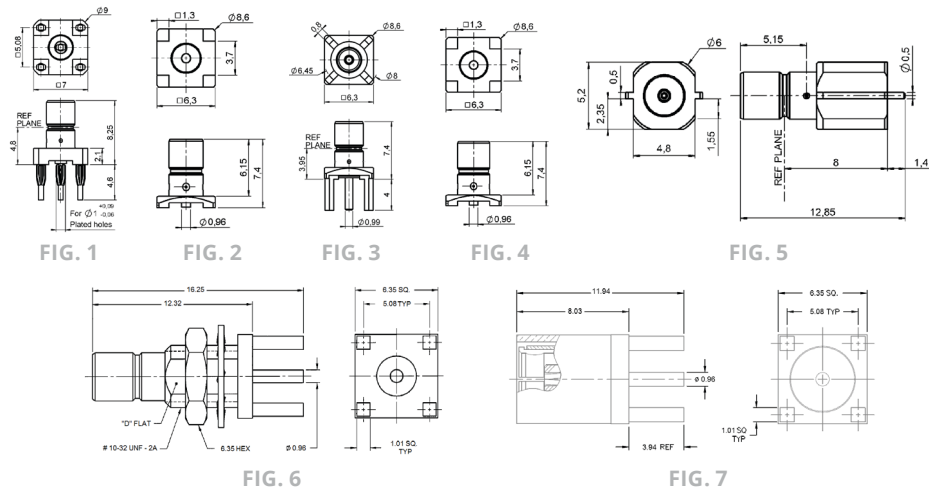
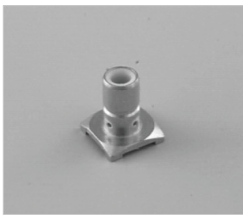
PART NUMBER	CAPTIVE CENTER CONTACT	PANEL DRILLING	FINISH
R114 504 225	Yes	P10	Nickel

RIGHT ANGLE BULKHEAD RECEPTACLES (MALE CENTER CONTACT)



PART NUMBER	CAPTIVE CENTER CONTACT	PANEL DRILLING	FINISH	NOTE
R114 670 000	Yes	P08	Gold	Solder Pot Contact
2012-1511-000			Nickel	
2012-7511-000				

STRAIGHT PCB RECEPTACLES (MALE AND FEMALE)



PART NUMBER (GOLD)	PART NUMBER (NICKEL)	FIG.	CAPTIVE CENTER CONTACT	ASSEMBLY INSTRUCTION	PANEL DRILLING	NOTE			
R114 416 020	N/A	1	Yes	-	P02	Press Fit Pins			
R114 423 000		5		M01	-	-	SMT Edge Card		
R114 424 000		2					-	-	SMT
R114 424 100									SMT / Tape & Reel 100 Pieces
R114 424 120									SMT / Tape & Reel 500 Pieces
R114 425 000		4					-	P05	Female Plug
R114 426 000		3		-	-	-	-		
R114 426 064							-		
2009-1511-000							-	P04	No Standoff
2009-1511-050							-		Standoff Legs
2025-1511-000	-	No Standoff							
2109-1511-000	2109-7511-000	6	-	-	-	No Standoff			



SMB

RIGHT ANGLE PCB RECEPTACLES (MALE CENTER CONTACT)

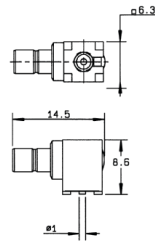
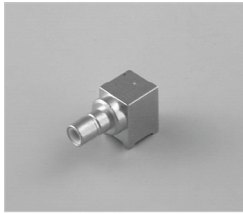


FIG. 1

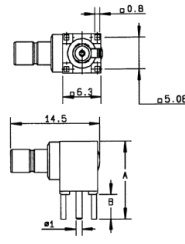


FIG. 2

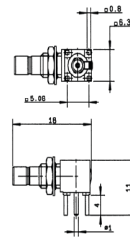


FIG. 3

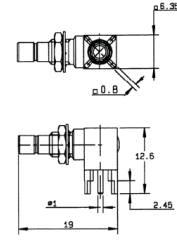


FIG. 4

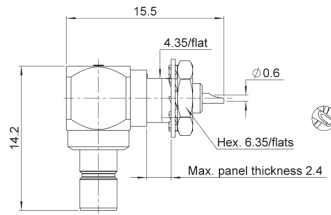


FIG. 5

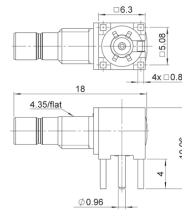


FIG. 6

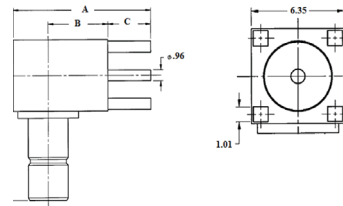


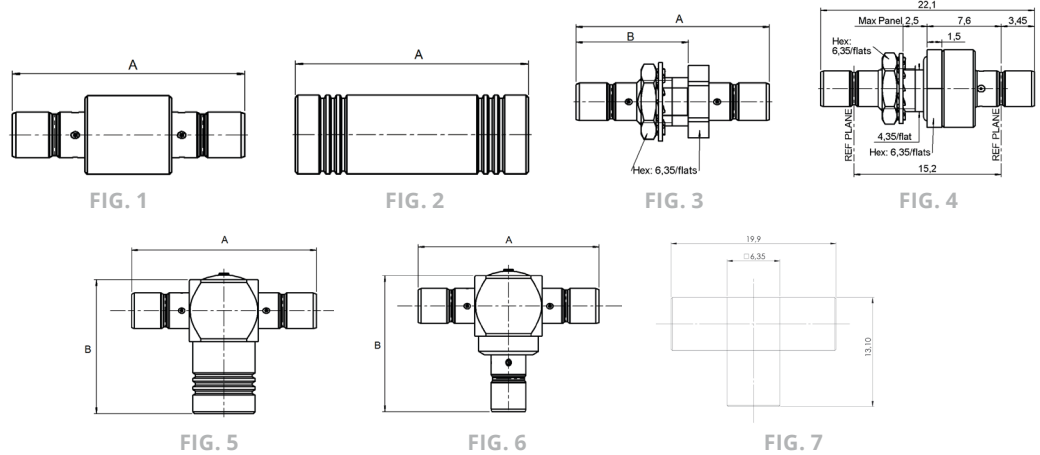
FIG. 7

PART NUMBER (GOLD)	PART NUMBER (NICKEL)	FIG.	DIMENSIONS (MM)				CAPTIVE CENTER CONTACT	ASSEMBLY INSTRUCTIONS	PANEL DRILLING	NOTE
			A	B	C	D				
R114 664 000	N/A	1	-	-	-	-	Yes	M01	Packaging 100 / Reel	
R114 664 120									SMT / Packaging 500 / Reel	
R114 665 000		2	12.6	4	-	-		-	P03	-
R114 665 020		3	-	-	-	-				Packaging Unit Rear Mount
R114 673 020		4	-	-	-	-				Packaging 100 Pieces
R114 673 120		5	-	-	-	-				Packaging 200 Pieces
R114 670 000		6	-	-	-	-				-
R114 673 823	7	10.7	3.8	3.9	12.7	-				
2010-1511-000	2010-7511-000	7	12.7	5.5	3.9	14.2	-	-		



SMB

ADAPTERS IN SERIES ADAPTERS



PART NUMBER (GOLD)	PART NUMBER (NICKEL)	FIG.	DIMENSIONS		CAPTIVE CENTER CONTACT	PANEL DRILLING	NOTE	
			A	B				
R114 703 000	N/A	1	-	-	Yes	-	Male - Male	
R114 704 000		2	19	-		-	Female - Female	
R114 720 000		3	-	11		P08	Bulkhead Male - Male	
R114 753 000		4	-	-			Hermetically Sealed Male - Male	
R114 780 000		5	-	14		-	Tee Female / Male - Male	
R114 781 000		6	19	12.7		-	Tee Male / Male - Male	
5207-1501-000	5207-7501-000	3	17.5	10.7		-	Bulkhead Male - Male	
5222-1501-000	5222-7501-000	1	-	-		-	Male - Male	
5213-1501-000	5213-7501-000	5	19	12.9		-	Tee Female / Male - Male	
5215-1501-000	5215-7501-000	2	17.5	-		-	Female - Female	
5216-1501-000	5216-7501-000	7	-	-		-	Tee Female / Female - Female	
5208-1501-000	5208-7501-000							



SMB-LOCK

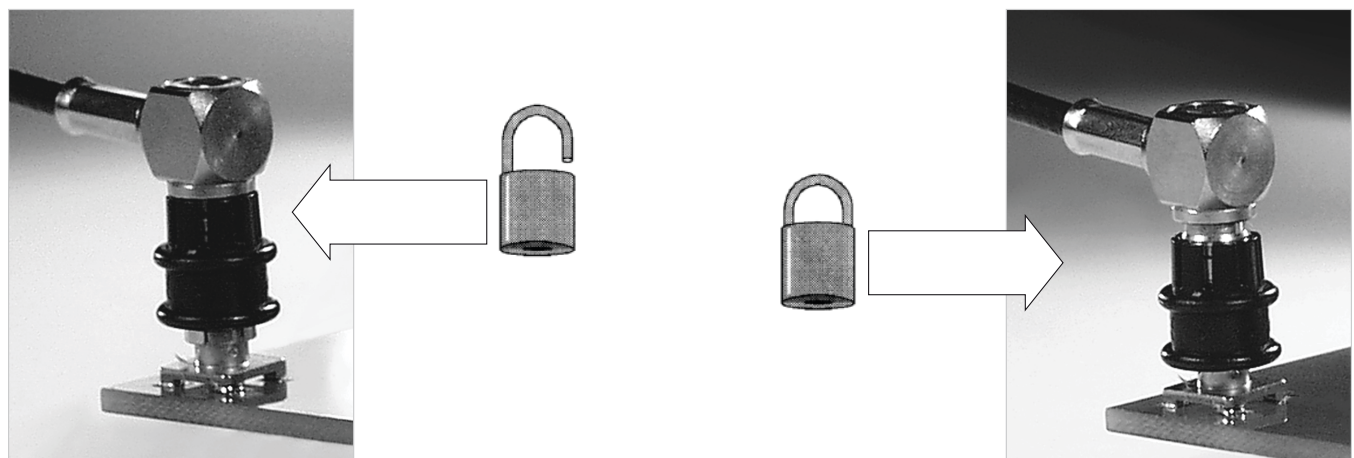
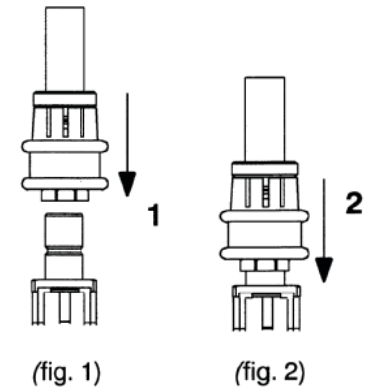
INTRODUCTION

Radiall offers SMB LOCK plugs with a 2-step connection system:

1. Snap the plug on the male connector (fig. 1)
2. Lock by pushing down the coupling nut (fig. 2)

This range:

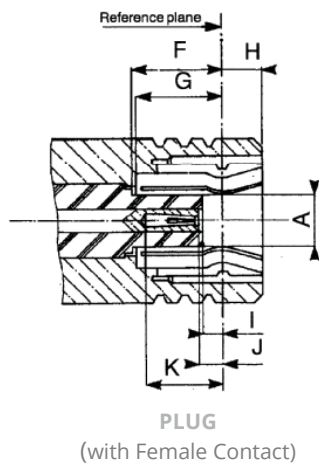
- Is intermateable with the standard SMB male connectors
- Benefits from a low intermodulation
- Replaces the standard SMB and screw-on connectors in all applications requiring:
 - A fast connection • A reliable lock-on connection • Long durability
- Possibility to visually control the locking system



- The connector allows a 360° cable rotation
- Coupling nut

The coupling nut is made with POM (halogen free). Its standard color is black.

INTERFACE



LETTER	MM		INCH	
	MIN	MAX	MIN	MAX
A DIA	-	2.06	-	.081
F	3.58	-	.141	-
G	3.58	-	.141	-
H	-	1.63	-	.064
I	0.18	-	.007	-
J	0.18	0.94	.007	.037
K	2.97	-	.117	-



SMB-LOCK

CHARACTERISTICS

TEST / CHARACTERISTICS	VALUES / REMARKS
------------------------	------------------

ELECTRICAL CHARACTERISTICS

Impedance		50Ω	
Operating Frequency		DC to 4 GHz	
Typical V.S.W.R. • Straight Models	.085"	2 GHz	4 GHz
	∅ 2.6/50	1.15	1.20
• Right Angle Models	.085"	1.20	1.25
	∅ 2.6/50	1.05	1.15
		1.15	1.25
RF Insertion Loss • Straight Models	.085"	0.20vF (GHz)	
	∅ 2.6/50	0.25vF (GHz)	
• Right Angle Models	.085"	0.25vF (GHz)	
	∅ 2.6/50	0.50vF (GHz)	
Testing Voltage (V RMS)	.085"	750	
	∅ 2.6/50	1000	
Working Voltage (V RMS)	.085"	335	
	∅ 2.6/50	335	
Insulation Resistance (MΩ)		1000	

MECHANICAL CHARACTERISTICS

Life		500 Matings min	
Cable Retention Force	.085"	220 N	
	∅ 2.6/50	110 N	
	∅ 5/50/S	110 N	
Coupling Nut Retention Force		50 N min	
Vibrations		MIL STD 202 F Method 240D, Condition B	

ENVIRONMENTAL CHARACTERISTICS

Temperature Range	-35 °C / + 125 °C
-------------------	-------------------

MATERIALS AND PLATING

	Material	Plating
Bodies	Brass	BBR
Center Contact	Beryllium Copper	Gold
Outer Contact	Bronze	-
Insulator	PTFE	-
Coupling Nut	POM (Halogen Free)	-

Notes

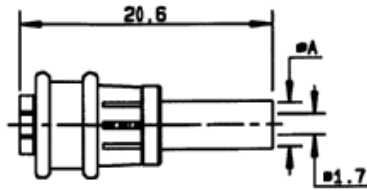
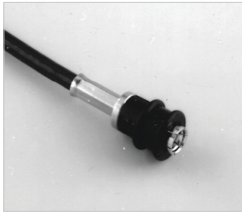
Standard packaging: 100 pieces (For unit packaging, add "W" after the P/N).



SMB-LOCK

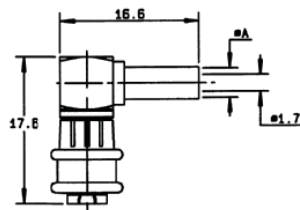
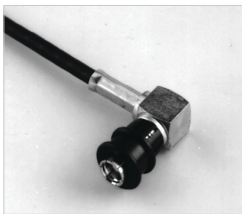
PLUGS

STRAIGHT PLUG FULL CRIMP TYPE FOR FLEXIBLE CABLES



CABLE GROUP	CABLE GROUP DIA.	PART NUMBER	DIMENSIONS A (MM)	CAPTIVE CENTER CONTACT
RG174 / RG188 / RG316	2.6/50/S	R117 082 807	3.25	Yes

RIGHT ANGLE PLUG CRIMP TYPE FOR FLEXIBLE CABLES



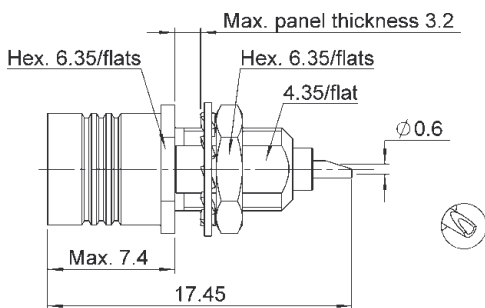
CABLE GROUP	CABLE GROUP DIA.	PART NUMBER	DIMENSIONS A (MM)	CAPTIVE CENTER CONTACT
RG174 / RG188 / RG316	2.6/50/S	R117 186 807	3.25	Yes

RECEPTACLES

- Lower mating/unmating force (from 2.5 N to 6N)
- Receptacles intermateable with SMB connectors
- Gold finish

The SMB limited detent connectors have the same electrical characteristics as standard SMB connectors.

BULKHEAD PLUG RECEPTACLE (REAR FIXING)

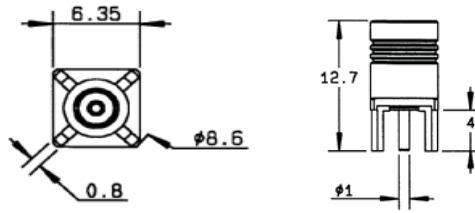


PART NUMBER	PANEL DRILLING	FINISH
R115 556 000	P08	Gold



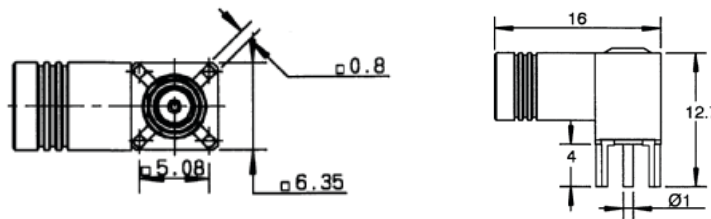
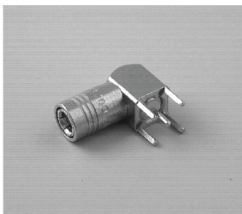
SMB-A and SUBGLIS

SMB LIMITED DETENT (SMB-A)
STRAIGHT PCB RECEPTACLES (FEMALE CENTER CONTACT)



PART NUMBER	CAPTIVE CENTER CONTACT	PANEL DRILLING	FINISH	PACKAGING
R115 427 000	Yes	P05	Gold	Unit

RIGHT ANGLE PCB RECEPTACLE (FEMALE CENTER CONTACT)



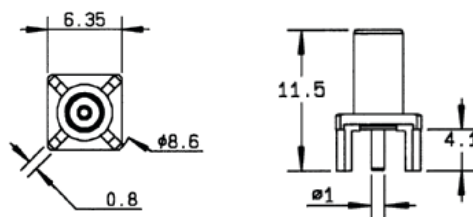
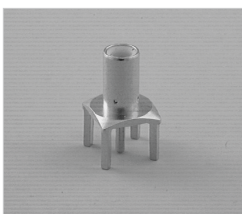
PART NUMBER	CAPTIVE CENTER CONTACT	PANEL DRILLING	FINISH	PACKAGING
R115 666 000	Yes	P04	Gold	Unit

SMB SLIDE-ON (SUBGLIS)

Slide-on connectors (mating/unmating force: 2.2 N to 4.9 N)

The SMB slide-on connectors are completely intermateable with standard SMB and SMB limited detent connectors and can be used for test applications. The SMB slide-on connectors have the same electrical characteristics as standard SMB connectors.

PCB RECEPTACLES



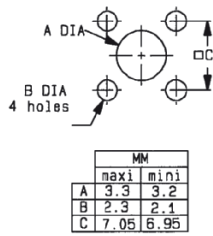
PART NUMBER	CAPTIVE CENTER CONTACT	PANEL DRILLING	FINISH	PACKAGING	NOTE
R116 426 000	Yes	P03	Gold	Unit	Male Center Contact



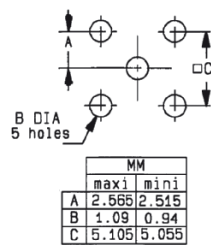
SMB

PANEL DRILLING

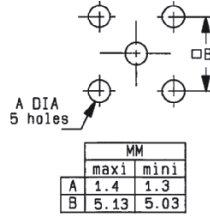
P01



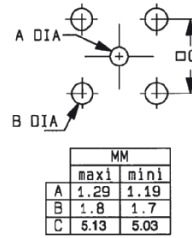
P02



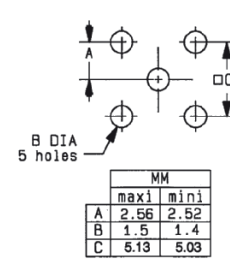
P03



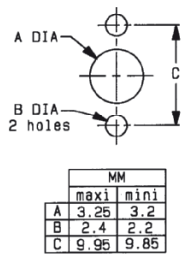
P04



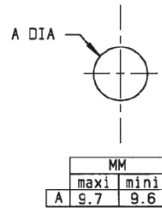
P05



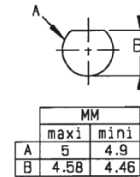
P06



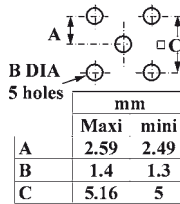
P07



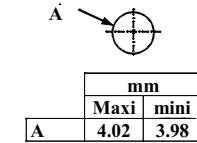
P08



P09



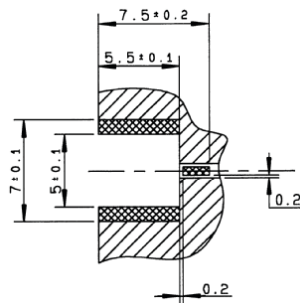
P10



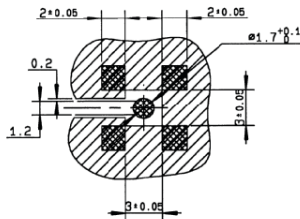
ASSEMBLY INSTRUCTIONS

M01

PART NUMBER
R114 423 000

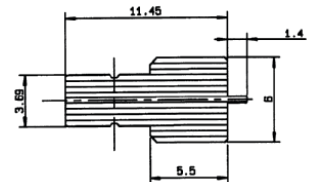


PART NUMBER
R114 424 000
R114 424 100
R114 664 000
R114 664 120

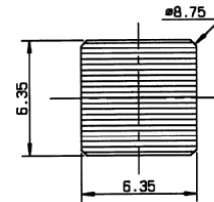


VIDEO SHADOW

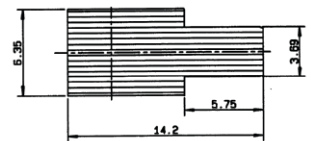
PART NUMBER
R113 423 000



PART NUMBER
R114 424 000
R114 424 100

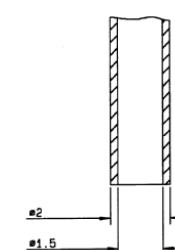


PART NUMBER
R114 664 000
R114 664 120



VACCUM NOZZLE DIMENSIONS:

PART NUMBER
R114 424 000





SMC



50Ω	DC - 10 GHz
-----	-------------

INTRODUCTION

GENERAL

- Subminiature coaxial connectors
- Screw-on coupling
- Plugs have female contacts
- Jacks have male contacts
- Low weight
- Reduced outline dimensions

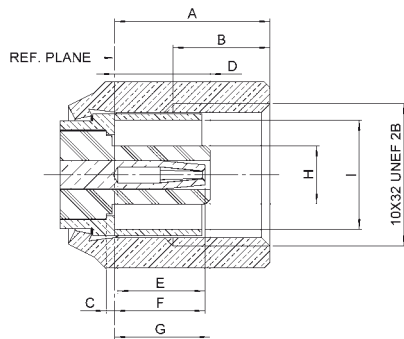
APPLICABLE STANDARDS

- MIL-C-39012

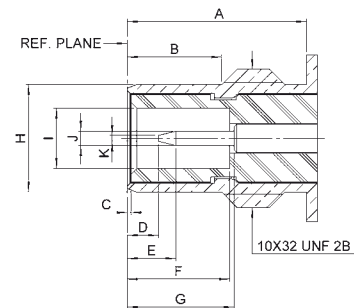
APPLICATIONS

- Civil and military telecommunications
- Aeronautics
- Missiles
- Edge mounting applications

INTERFACE



PLUG



JACK

LETTER	MM		INCH	
	MIN	MAX	MIN	MAX
A	5.14	5.55	.202	.219
B	3.20	4.20	.126	.165
C	0.25	0.35	.010	.014
D	2.95	3.00	.116	.118
E	2.80	3.20	.110	.126
F	2.80	3.40	.110	.134
G	3.15	3.40	.124	.134
H	2.00	2.05	.079	.081
I	3.75	3.80	.148	.150

LETTER	MM		INCH	
	MIN	MAX	MIN	MAX
A	6.00	6.20	.236	.244
B	3.15	3.35	.124	.132
C	0.05	0.20	.002	.008
D	0.65	1.50	.026	.059
E	1.30	2.05	.051	.081
F	3.40	3.71	.134	.146
G	3.40	3.95	.134	.156
H	3.65	3.69	.144	.145
I	2.08	2.13	.082	.084
J	0.48	0.52	.019	.020
K	-	0.20	-	.008



SMC

CHARACTERISTICS

TEST / CHARACTERISTICS	MIL-C-39012 PARAGRAPH	VALUES / REMARKS
------------------------	-----------------------	------------------

ELECTRICAL CHARACTERISTICS

Impedance	-	50Ω
Frequency Range	-	DC - 10 GHz
V.S.W.R. (typ.) • Straight • Right Angle	Cable 3-14	2/50 1.25 + 0.04 F (GHz) 1.40 + 0.06 F (GHz)
Insertion Loss • Straight • Right Angle	3-27	2.6/50 1.20 + 0.04 F (GHz) 1.30 + 0.04 F (GHz)
RF Leakage	3-26	0.25 dB max. at 4 GHz 0.5 dB max. at 4 GHz
Insulation Resistance	3-11	-60 dB min between 2 and 3 GHz 1000 MΩ min
Contact Resistance • Center Contact (mΩ) • Outer Contact (mΩ)	3-16 - -	Initial 6 1
Voltage Rating (volts RMS) • At Sea Level • At 70000 ft (21000 m)	Cable - - -	After Environment 8 1.5
Dielectric Withstanding Voltage • At Sea Level • At 70000 ft (21000 m)	Cable 3-17 - -	2.6/50 250 V rms 60 V rms
RF High Potential Withstanding Voltage (Frequency 5 MHz) • At Sea Level	Cable 3-23 -	2.6/50 750 V rms 185 V rms
		2.6/50 500 V rms 700 V rms

MECHANICAL CHARACTERISTICS

Durability	3-15	500 Matings
Force to Engage and Disengage	3-5-1	Torque: 16 inch-ounces max - 11.3 Ncm
Mating Torque	-	35 to 50 inch-ounces - 25 to 35 Ncm
Coupling Nut Proof Torque	-	100 inch-ounces - 71 Ncm
Coupling Nut Retention Force	3-25	35 lbs min - 156 N min
Cabling Retention Force	Cable 3-24	2/50 13 lbs - 58 N
Contact Captivation	-	2.6/50 25 lbs - 110 N Axial Force: 4 lbs - 18 N Torque: Not Applicable

ENVIRONMENTAL CHARACTERISTICS

Operating Temperature Range • Standard Models and Hermetic • Models for Semi-Rigid Cables	-	-65 °C / + 165 °C -65 °C / +105 °C
Temperature Cycling	-	MIL-STD-202, Method 102, Condition C
Thermal Shock	3-20	MIL-STD-202, Method 107, Condition B
High Temperature Test	-	MIL-STD-202, Method 108
Corrosion (Salt Spray)	3-13	MIL-STD-202, Method 101, Condition B, 5%
Vibration	3-18	MIL-STD-202, Method 204, Condition D, 20g
Shock	3-19	MIL-STD-202, Method 213, Condition C, 100g
Moisture Resistance	3-21	Not Applicable
Barometric Pressure	3-22	MIL-STD-202, Method 105, Condition C
Hermetic Test	-	Down to 10 ⁻⁶ mm Hg (Torr) Leak rate <1 x 10 ⁻⁶ atm/cm ³ /sec

MATERIALS AND PLATING

	Material	Plating
Bodies and Male Contacts	Brass, Half Hard per QQ-B-626	Gold to Satisfy the Corrosion Requirements (Bodies)
Female Contacts and Interfaces	Beryllium Copper per QQ-C-530	Gold (Center contact)
Ferrules	Brass	-
Insulators	PTFE Teflon	-
Gasket	Silicone Rubber	-

All dimensions are given in mm.



SMC

PLUGS AND JACK STRAIGHT PLUGS

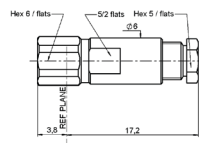


FIG. 1

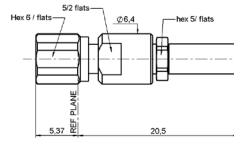


FIG. 2

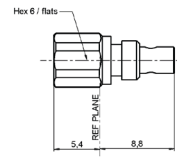


FIG. 3

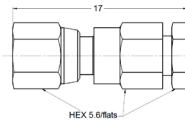


FIG. 5

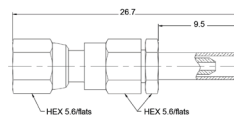


FIG. 6

CABLE GROUP	CABLE GROUP DIA.	PART NUMBER (GOLD)	PART NUMBER (NICKEL)	FIG.	NOTE
RG178 / RG196	2/50/S	R112 003 000	N/A	1	Clamp Type
RG174 / RG316 / RG179	2.6/50+75/S	R112 005 000			
RG405	.085"	R112 075 000		2	Crimp Type
RG405	.085"	R112 053 000		3	Solder Type
RG178 / RG196	2/50/S	1002-1571-002	1002-7571-002	5	Crimp Type
		1002-1551-002	1002-7551-002		
RD178	2/50/D	1002-1551-005	1002-7551-005	4	Clamp Type
		1002-1571-005	1002-7571-005		
RG174 / RG316 / RG179	2.6/50/S	1002-1551-003	1002-7551-003	4	Clamp Type
		1002-1571-003	1002-7571-003		
RD316	2.6/50/D	1002-1551-019	1002-7551-019	4	Clamp Type
		1002-1571-019	1002-7571-019		
RG405	.085"	1002-1541-010	1002-7541-010	4	Solder Clamp
RG402	.141"	1002-1541-009	1002-7541-009		

RIGHT ANGLE PLUGS

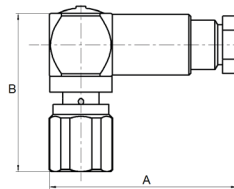


FIG. 1

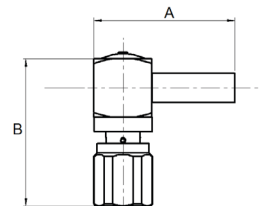


FIG. 2

CABLE GROUP	CABLE GROUP DIA.	PART NUMBER (GOLD)	PART NUMBER (NICKEL)	FIG.	DIMENSIONS (MM)		NOTE
					A DIA	B DIA	
RG174 / RG316 / RG179	2.6/50+75/S	R112 165 000	N/A	1	19	15.9	Crimp Type
RG178 / RG196	2/50/S	R112 183 000			16	15.5	
RG174 / RG316 / RG179	2.6/50+75/S	R112 186 000		2	15.3	15.9	
RG178 / RG196	2/50/S	1005-1551-002	1005-7551-002	1	14.9	13.9	Clamp Type
		1105-1521-002	1105-7521-002	2	16		Crimp Type
RD178	2/50/D	1005-1551-005	1005-7551-005	1	14.9		Clamp Type
		1105-1521-005	1105-7521-005	2	16		Crimp Type
RG174 / RG316 / RG179	2.6/50/S	1005-1551-003	1005-7551-003	1	14.9		Clamp Type
		1105-1521-003	1105-7521-003	2	16		Crimp Type
RD316	2.6/50/D	1005-1551-019	1005-7551-019	1	14.9		Clamp Type
		1105-1521-019	1105-7521-019	2	16		Crimp Type
RG405	.085"	1005-1541-010	1005-7541-010	1	14.9		Solder Clamp
RG402	.141"	1005-1541-009	1005-7541-009				



SMC

JACKS AND RECEPTACLES

STRAIGHT JACK

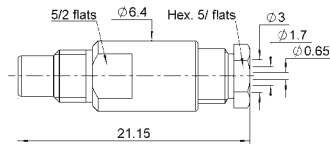


FIG. 1

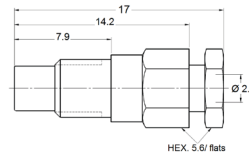


FIG. 2

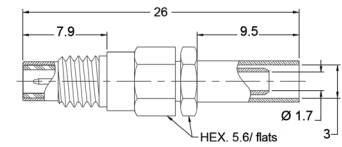


FIG. 3

CABLE GROUP	CABLE GROUP DIA.	PART NUMBER (GOLD)	PART NUMBER (NICKEL)	NOTE
RG178 / RG196	2.6/50+75/S	R112 205 000	-	Clamp Type
RG178 / RG196	2/50/S	1001-1551-002	1001-7551-002	
RD178	2/50/D	1001-1571-002	1001-7571-002	Crimp Type
		1001-1551-005	1001-7551-005	Clamp Type
RG174 / RG316 / RG179	2.6/50/S	1001-1571-005	1001-7571-005	Crimp Type
		1001-1551-003	1001-7551-003	Clamp Type
RD316	2.6/50/D	1001-1571-003	1001-7571-003	Crimp Type
		1001-1551-019	1001-7551-019	Clamp Type
RG405	.085"	1001-1571-019	1001-7571-019	Crimp Type
RG402	.141"	1001-1571-010	1001-7571-010	Solder Clamp
		1001-1571-009	1001-7571-009	

BULKHEAD STRAIGHT AND RIGHT ANGLE JACKS

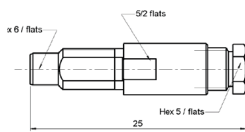


FIG. 1

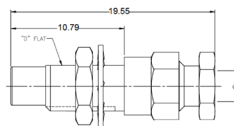


FIG. 2

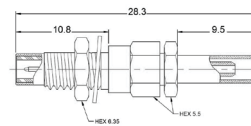


FIG. 3

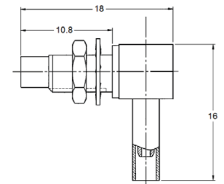


FIG. 4

CABLE GROUP	CABLE GROUP DIA.	PART NUMBER (GOLD)	PART NUMBER (NICKEL)	FIG.	PANEL DRILLING	NOTE
RG178 / RG196	2/50/S	R112 303 000	-	1	P03	-
RG174 / RG316 / RG179	2.6/50+75/S	R112 305 000	-			
RG178 / RG196	2/50/S	1003-1551-002	1003-7551-002	2		Clamp Type
		1003-1571-002	1003-7571-002	3		Crimp Type
		1006-1551-002	1006-7551-002	4		Clamp Type
		1106-1521-002	1106-7521-002			Crimp Type
RD178	2/50/D	1003-1551-005	1003-7551-005	2		Clamp Type
		1003-1571-005	1003-7571-005	3		Crimp Type
		1006-1551-005	1006-7551-005	4		Clamp Type
		1106-1521-005	1106-7521-005			Crimp Type
RG174 / RG316 / RG179	2.6/50/S	1003-1551-003	1003-7551-003	2		Clamp Type
		1003-1571-003	1003-7571-003	3		Crimp Type
		1006-1551-003	1006-7551-003	4	Clamp Type	
		1106-1521-003	1106-7521-003		Crimp Type	

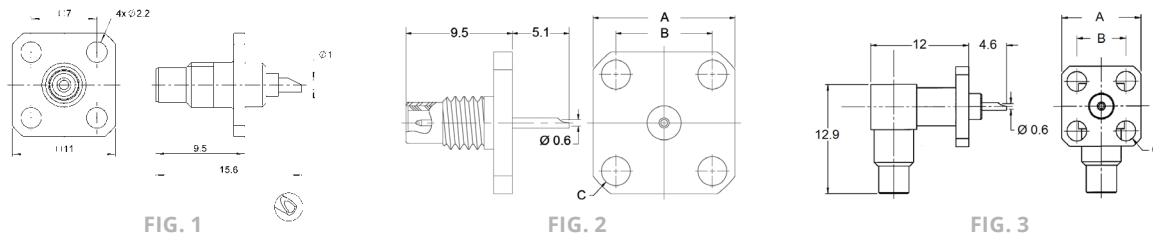


SMC

BULKHEAD STRAIGHT AND RIGHT ANGLE JACKS (CONTINUED)

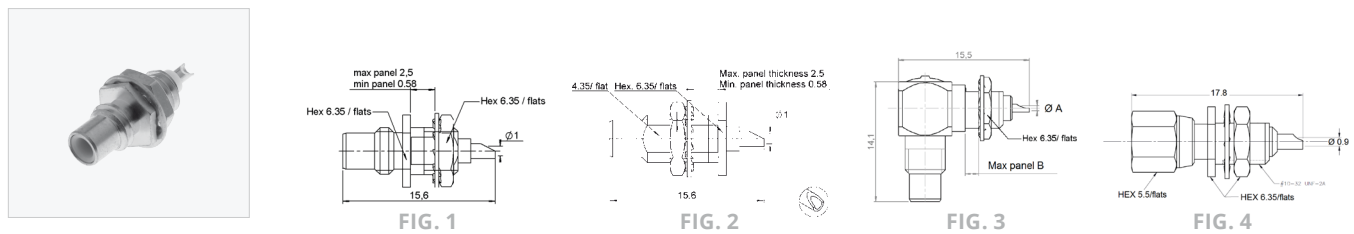
CABLE GROUP	CABLE GROUP DIA.	PART NUMBER (GOLD)	PART NUMBER (NICKEL)	FIG.	PANEL DRILLING	NOTE
RD316	2.6/50/D	1003-1551-019	1003-7551-019	2	P03	Clamp Type
		1003-1571-019	1003-7571-019	3		Crimp Type
		1006-1551-019	1006-7551-019	4		Clamp Type
		1106-1521-019	1106-7521-019			Crimp Type
RG405	.085"	1003-1541-010	1003-7541-010	2		Solder Clamp
		1006-1541-010	1006-7541-010	4		
RG402	.141"	1003-1541-009	1003-7541-009	2		
		1006-1541-009	1006-7541-009	4		

SQUARE FLANGE RECEPTACLES



PART NUMBER (GOLD)	PART NUMBER (NICKEL)	FIG.	DIMENSIONS (MM)			PANEL DRILLING
			A	B	C	
R112 403 000	N/A	1	-	-	-	P01
1484-1511-000	1484-7511-000	2	9.5	5.9	2.4	-
1486-1511-000	1486-7511-000		-			
1490-1511-000	1490-7511-000	3	12.7	8.6	2.6	-
1488-1511-000	1488-7511-000		9.5	5.9	2.4	-

BULKHEAD RECEPTACLES WITH SOLDER POT CONTACT



PART NUMBER (GOLD)	PART NUMBER (NICKEL)	FIG.	DIMENSIONS (MM)		PANEL DRILLING	NOTE
			A	B		
R112 553 000	N/A	1	-	-	P03	Front Mount
R112 554 000		2	-	-		Rear Mount
R112 670 000		3	0.6	1.55		Front Mount
1004-1511-000	1004-7511-000	2	-	-		Rear Mount
1019-1511-000	1019-7511-000	1	-	-		Front Mount
1012-1511-000	1012-7511-000	3	0.9	2.4		
1017-1511-000	1017-7511-000	4	-	-		



SMC

RECEPTACLES AND ADAPTERS

PCB RECEPTACLES

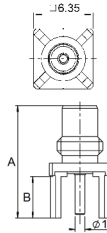
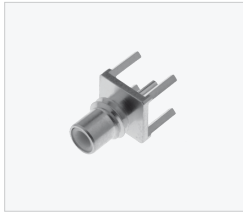


FIG. 1

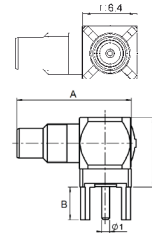


FIG. 2

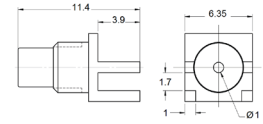


FIG. 3

PART NUMBER (GOLD)	PART NUMBER (NICKEL)	FIG.	DIMENSIONS (MM)			PANEL DRILLING	NOTE
			A	B	C		
R112 426 000	N/A	1	11.8	4.4	-	P02	Standoff Legs
R112 665 000		2	14.2	-	12.7		
1009-1511-000	1009-7511-000	1	11.4	4	-	P04	No Standoff
1010-1511-000	1010-7511-000	2	14		7		
1010-1511-001	1010-7511-001		8.8		-		
1109-1511-000	1109-7511-000	1	16.3		-	P04 + P03	
1110-1511-000	1110-7511-000	2	18	7			
1009-1511-005	1009-7511-005	3	-	-	-	P04	End Launch Type

IN SERIES ADAPTERS

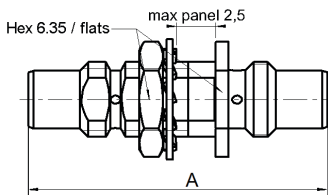


FIG. 1

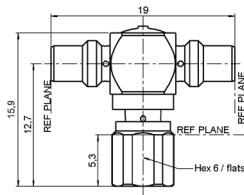
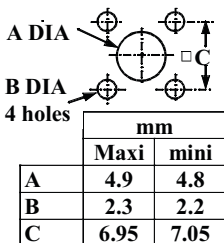


FIG. 2

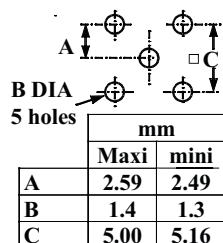
PART NUMBER (GOLD)	FIG.	DIMENSIONS A (MM)	PANEL DRILLING	NOTE
R112 720 000	1	19	P03	Male - Male Bulkhead
R112 780 000	2	-	-	Tee Male - Male / Female
5822-1501-000	1	17.5	P03	Female - Female

PANEL DRILLING

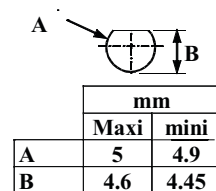
P01



P02



P03



P04

