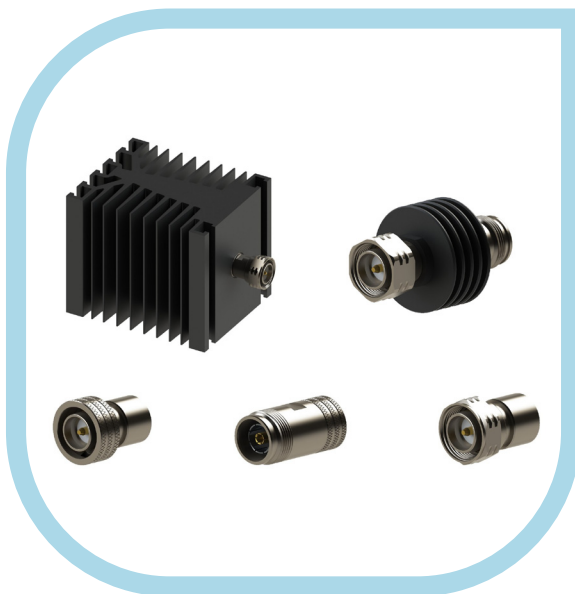




## 4.3-10 Termination & Attenuator Series

High performance microwave solution

Synergy offers a new series of microwave components equipped with 4.3-10 connectors which include terminations up to 100W and attenuators up to 15W, for applications such as telecom base station integration and microwave power testing.



Following the commercialization of the 4.3-10 series of connectors, Synergy developed a global range of microwave components equipped with 4.3-10, including terminations up to 100W and attenuators up to 15W. These terminations are available from low power (2W) up to high power (100W) at 6 GHz maximum frequency and provide outstanding electrical performance.

The design of the low power version supports outdoor usage: terminations are compliant with several environmental testing requirements (vibration, shock...) and are IP67 rated. Attenuators are available up to 15W with 6 GHz maximum frequency. These new attenuators are IP65 rated and feature a robust design which makes them perfectly suited for severe environmental conditions.

4.3-10 terminations & attenuators are part of Radiall's global 4.3-10 offer which includes a variety of coaxial connectors and all types of



**Synergy 4.3-10 terminations and attenuators are the perfect solution for integration of microwave components in telecom base stations and power testing.**

*High performance microwave solution*

Part Number	Gender	Connectors	Frequency (GHz)	Power (W)	Accessory
ST4041D1000	M	4.3-10 Screw	DC-4	2	
ST4041D1121	M	4.3-10 Screw	DC-4	2	Cord
ST4041D2000	M	4.3-10 Push	DC-4	2	
ST4041D2121	M	4.3-10 Push	DC-4	2	Cord
ST4041D5000	F	4.3-10	DC-4	2	
ST404758000	M	4.3-10 Screw	DC-6	30	
ST404759000	F	4.3-10	DC-6	30	
ST404768000	M	4.3-10 Screw	DC-6	50	
ST404769000	F	4.3-10	DC-6	50	
ST404778000	M	4.3-10 Screw	DC-6	100	
ST404779000	F	4.3-10	DC-6	100	

Part Number	Gender	Connectors	Frequency (GHz)	Attenuation	Power (W)
ST415603000	M/F	4.3-10 Screw	DC-6	3 dB	15
ST415606000	M/F	4.3-10 Screw	DC-6	6 dB	15
ST415610000	M/F	4.3-10 Screw	DC-6	10 dB	15
ST415620000	M/F	4.3-10 Screw	DC-6	20 dB	15

### Features & Benefits

- Global range of 4.3-10 terminations & attenuators up to 100W
- 6 GHz maximum frequency with excellent VSWR performance
- Robust design

### Applications

- Telecom base station integration
- Microwave power testing