



Microwave High Power Terminations

The best choice for High Performance and Quality

Synergy is renewing its range of High Power Terminations from 30 to 200 Watts, available with Type N, SMA, 7-16 and TNC connections. This comprehensive offer ensures outstanding performance and quality, at a competitive price.



Microwave global range



Conduction model

High Power Terminations from 30 to 200W up to 6 GHz:

- Available with 4 types of connections: Type N, SMA, 7-16 and TNC (male and female interfaces)
- Conduction version is available for applications where cooling fan form factors need to be adapted
- Custom design available upon request

Electrical Performance:

- Frequency range: DC-6 GHz
- VSWR max 1.3 @ 6 GHz
- Peak Power = 2 kW

Features

Competitive Offering

- Excellent performance: frequency, VSWR, and Peak Power
- Reduced size and form factors
- Competitive pricing, delivery, and service

Safe Range

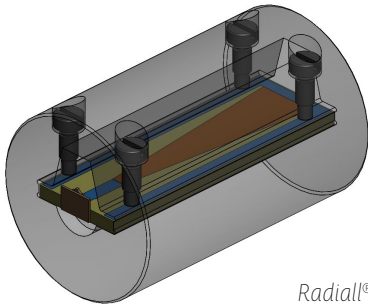
- RoHS compliant
- Complies with standard MIL39030
- Complies with ISO/IEC 17025
- Fully tested, approved, and certified by an Independent test laboratory



The Best choice
for High Performance
and Quality

Electrical Performance

Average Power at 25 °C (W)	30 to 200 W
Operating Frequency (GHz)	DC - 6
V.S.W.R	1, 2 up to 3 GHz 1, 3 up to 6 GHz
Impedance (Ω)	50
DC Resistance (Ω)	50 \pm 5%
Peak Power at 25 °C (1 μ s,1%) (kW)	2
Operating Temperature Range (°C)	-55 / +125
Storage Temperature Range (°C)	-55 / +125



Radiall®
Termination Module

