

HELICAL RHCP / LHCP ANTENNA

5150 - 5250 MHz

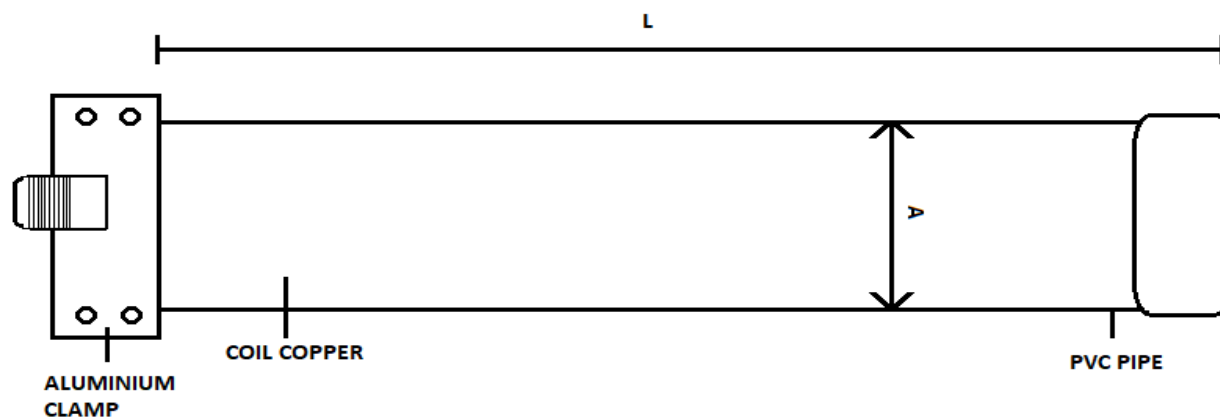
10 - 12 dbi Gain

General:

These SCH series Helical Antennas are light weight, Broadband and Rugged Helical Antennas , supplied with stainless steel mounting hardware.

For wide bandwidth operation with a low SWR, the matching section uses a rigid coaxial feed with helical antenna termination , N-Female, mounted at the end for easy antenna feed connectivity.

The antenna is designed to operate at D.C. ground.



ELECTRICAL DATA

Frequency Range (MHz)	5150 - 5250
Gain (dBi)	10 - 12 dbi
Bandwidth (MHz.)	100
Polarization	LHCP/RHCP.
Input Impedance (Ohms)	50
Beamwidth 3db (Degrees)	50
Front to Back Ratio	18
VSWR	1.5:1
Input Termination	N-Female
RF Power Handling Capacity (Watts)	200

MECHANICAL DATA

Materials	PVC
Mounting HW	Stainless
Weight (Kg)	0.3 Kg
Wind Rating (KMPH)	180
Radiating Material	Copper
Overall Length	200 cm
Maximum Mount Pipe Diameter	20-25 mm

Please Note: 1. Specifications are subject to change without any notice.
2. Customized in-band and out of band versions are available on request.