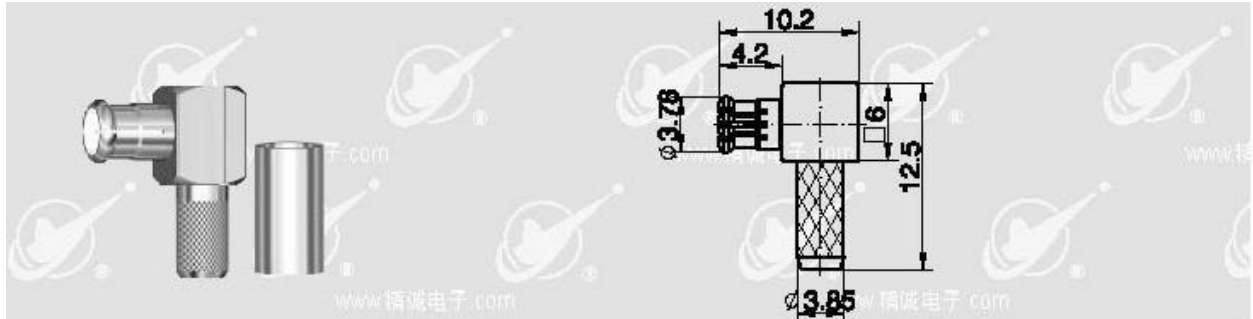


Synergy Telecom P Ltd.

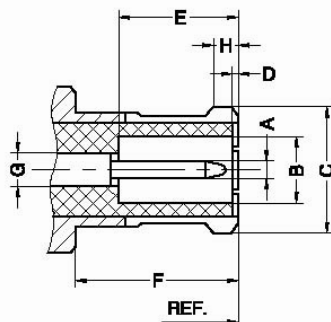
MCX(M) R/A BT 3002 CRIMP



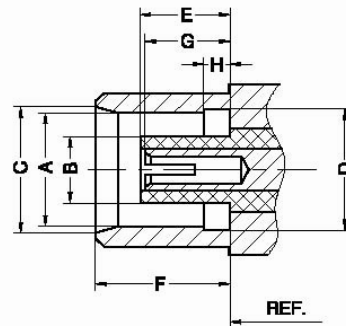
TYPE MCX RF coaxial Connector is a Kind of miniature Connectors with snap-on Coupling. Characteristic impedance has two types: 50Ω and 75Ω . The characteristic of connectors is in small volume, light weight, concise structure, easy to use. They are widely used in the Global position system, Digital personal computer network, all kinds of radio instruments, small-sized electronic equipments and WLAN system.

INTERFACE MATING DIMENSIONS

Pin connector



Socket connector



MAJOR TECHNICAL CHARACTERISTICS

Temperature Range	-55 ~ +155°C (PE Cable -40 ~ +85°C)	
Impedance	50Ω, 75Ω	
Frequency Range	DC ~ 6GHz	
Working Voltage	250V (50Ω) 170V (75Ω) at sea level	
Withstanding Voltage	750V (50Ω) 250V (75Ω) at sea level	
Contact resistance		
	Center Contact	≦ 5 mΩ
	Outer Contact	≦ 2.5 mΩ
Insulation resistance		≧ 1000 MΩ
Center conductor retention force		≧ 0.28N
Insertion Loss		0.18dB/1GHz
Engagement force		≦ 20N
Disengagement force		≧ 8N
Voltage Standing Wave Ratio		
	Straight	≦ 1.20/1GHz
	Right angle	≦ 1.45/1GHz
Durability(mating)		≧ 500次 (cycles)

MATERIAL & PLATING

body	brass	gold plated
pin contact	Tin bronze	gold plated
socket contact	beryllium-copper	gold plated
resilient contact	beryllium-copper	gold plated
insulator	PTFE	
crimp ferrule	copper alloy	nickel or gold plated
o-ring sealing	6146 silicone rubber	

13-15 RPS flats, E-block, Vikaspuri, N Delhi-110018, India
Phone-91 11 28533349, Mobile-91 98101 38894, Fax -91 11 2853 1435,
E-mail : pradeep@rfconnectorhouse.com, Website : <http://www.rfconnector.info/>