

Roxtec ComSeal™ 10, 16 and 32

– CABINET SEALS FOR QUICK INSTALLATION

Complete sealing solution

The Roxtec ComSeal™ is an innovative cable entry solution for cables in cabinets. The frames are available in two different materials – light-weight aluminum and acid proof stainless steel, AISI 316 for corrosive environment.

Supplied as complete kits

The solutions are supplied as ready-made kits, including adaptable

sealing modules, which simplifies planning, purchasing and installation.

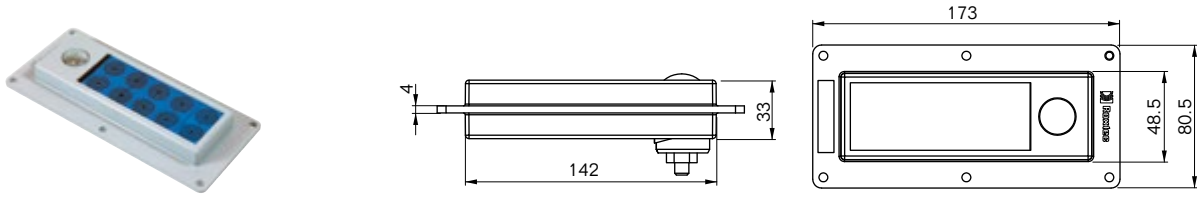
Quick installation

The seals can be attached either to the inside or the outside of a cabinet. This compensates for interfering equipment in cramped spaces and makes installation easy.

BENEFITS

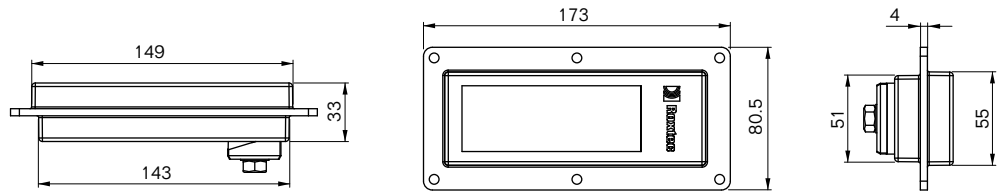
- Available in powder coated aluminum or acid proof stainless steel, AISI 316
- Approved for IP 55
- Multidiameter™ by Roxtec – adaptability through modules with removable layers
- UL Certified 3, 12, 12K

Roxtec ComSeal™ 10



Aluminum

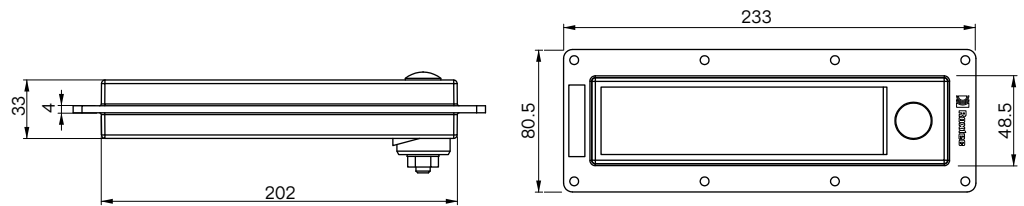
Kit	Multidiameter™ range and number of cables/pipes		Weight		Holecut width x length (mm)	Art No.
			(kg)	(lb)		
	0+3.5-16.5 0+0.138-0.650 (CM 20w40)	0+9.5-32.5 0+0.374-1.280 (CM 40 10-32)				
ComSeal™ 10/4	2 cables/pipes	2 cables/pipes	0.515	1.13	56 x149	105299
ComSeal™ 10/7	6 cables/pipes	1 cables/pipes	0.515	1.13	56 x149	105301
ComSeal™ 10/10	10 cables/pipes		0.515	1.13	56 x149	105302



Acid proof stainless steel

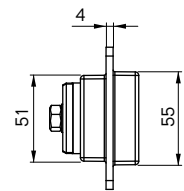
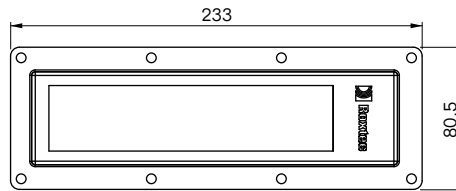
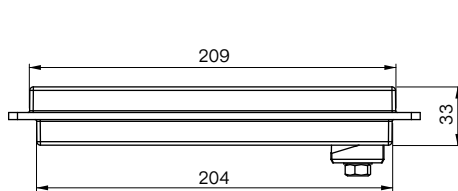
Kit	Multidiameter™ range and number of cables/pipes		Weight		Holecut width x length (mm)	Art No.
			(kg)	(lb)		
	0+3.5-16.5 0+0.138-0.650 (CM 20w40)	0+9.5-32.5 0+0.374-1.280 (CM 40 10-32)				
ComSeal™ 10/4 AISI 316	2 cables/pipes	2 cables/pipes	1.096	2.42	58.5 x151	105676
ComSeal™ 10/7 AISI 316	6 cables/pipes	1 cables/pipes	1.096	2.42	58.5 x151	105677
ComSeal™ 10/10 AISI 316	10 cables/pipes		1.096	2.42	58.5 x151	105678

Roxtec ComSeal™ 16



Aluminum

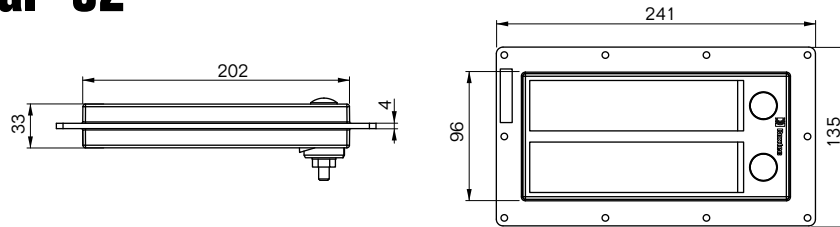
Kit	Multidiameter™ range and number of cables/pipes		Weight		Holecut width x length (mm)	Art No.
			(kg)	(lb)		
	0+3.5-16.5 0+0.138-0.650 (CM 20w40)	0+9.5-32.5 0+0.374-1.280 (CM 40 10-32)				
ComSeal™ 16/4		4 cables/pipes	0.666	1.47	56 x 209	105310
ComSeal™ 16/7	4 cables/pipes	3 cables/pipes	0.666	1.47	56 x 209	105312
ComSeal™ 16/10	8 cables/pipes	2 cables/pipes	0.666	1.47	56 x 209	105313
ComSeal™ 16/16	16 cables/pipes		0.666	1.47	56 x 209	105314



Acid proof stainless steel

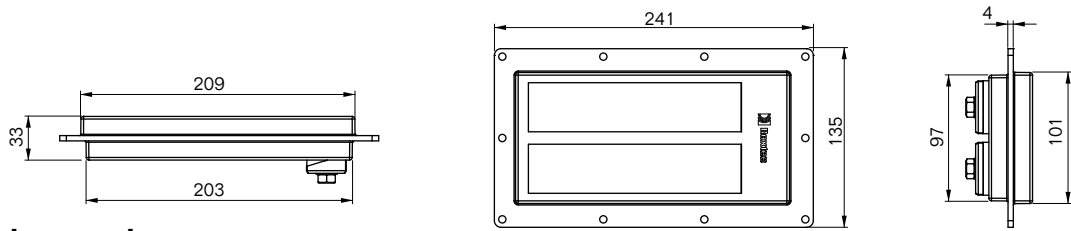
Kit	Multidiameter™ range and number of cables/pipes		Weight		Holecut width x length (mm)	Art No.
			(kg)	(lb)		
	0+3.5-16.5 0+0.138-0.650 (CM 20w40)	0+9.5-32.5 0+0.374-1.280 (CM 40 10-32)				
ComSeal™ 16/4 AISI 316		4 cables/pipes	1.407	3.11	58.5 x 211	105679
ComSeal™ 16/7 AISI 316	4 cables/pipes	3 cables/pipes	1.407	3.11	58.5 x 211	105680
ComSeal™ 16/10 AISI 316	8 cables/pipes	2 cables/pipes	1.407	3.11	58.5 x 211	105681
ComSeal™ 16/16 AISI 316	16 cables/pipes		1.407	3.11	58.5 x 211	105682

Roxtec ComSeal™ 32



Aluminum

Kit	Multidiameter™ range and number of cables/pipes		Weight		Holecut width x length (mm)	Art No.
			(kg)	(lb)		
	0+3.5-16.5 0+0.138-0.650 (CM 20w40)	0+9.5-32.5 0+0.374-1.280 (CM 40 10-32)				
ComSeal™ 32/8		8 cables/pipes	1.259	2.78	103 x 209	105316
ComSeal™ 32/14	8 cables/pipes	6 cables/pipes	1.259	2.78	103 x 209	105320
ComSeal™ 32/20	16 cables/pipes	4 cables/pipes	1.259	2.78	103 x 209	105321
ComSeal™ 32/32	32 cables/pipes		1.259	2.78	103 x 209	105322



Acid proof stainless steel

Kit	Multidiameter™ range and number of cables/pipes		Weight		Holecut width x length (mm)	Art No.
			(kg)	(lb)		
	0+3.5-16.5 0+0.138-0.650 (CM 20w40)	0+9.5-32.5 0+0.374-1.280 (CM 40 10-32)				
ComSeal™ 32/8 AISI 316		8 cables/pipes	2.180	4.81	107 x 213	105683
ComSeal™ 32/14 AISI 316	8 cables/pipes	6 cables/pipes	2.180	4.81	107 x 213	105684
ComSeal™ 32/20 AISI 316	16 cables/pipes	4 cables/pipes	2.180	4.81	107 x 213	105685
ComSeal™ 32/32 AISI 316	32 cables/pipes		2.180	4.81	107 x 213	105686

Each Roxtec ComSeal™ kit consists of:

- Roxtec ComSeal™ frame
- Roxtec CM modules
- Screws, nuts and washers
- Gasket
- Assembly gel/Lubricant



Roxtec International AB
 Box 540, 371 23 Karlskrona, SWEDEN
 PHONE +46 455 36 67 00, FAX +46 455 820 12
 EMAIL info@roxtec.com, www.roxtec.com