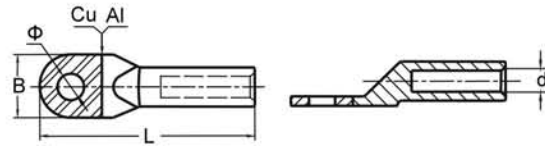




BIMETAL LUG

DTL



Material: E-Cu; Al-99.6%

Surface treatment: Bright

Products property: Due to the coupling effect when Aluminium comes in contact with Copper, corrosion will happen in a short time. Currently the best solution is to use Aluminium-Copper bimetal connectors. A bimetal lug should be used for termination. The friction welding is well done. And its barrel capped is filled with joint compound to avoid oxidization.

Type	Dimensions(mm)			
	L	d	B	φ
DTL10-6	62	4.8	13.5	6.5
DTL16-8	70	5.8	16	8.5
DTL25-8	75	7.2	17.5	8.5
DTL35-10	85	8.5	20	10.5
DTL50-10	90	9.7	23	10.5
DTL70-12	102	11.5	26	12.5
DTL95-12	112	13.5	28	12.5

Type	Dimensions(mm)			
	L	d	B	φ
DTL120-14	120	15	31	14.5
DTL150-14	125	16.5	35	14.5
DTL185-16	133	18.5	37.5	17
DTL240-16	140	21	40	17
DTL300-18	160	23.5	44.5	18.5
DTL400-20	170	27	50	21
DTL500-20	225	29	60	21



SYNERGY TELECOM (P) LTD.

13-15, 8th Floor, E-Block, Vittal Road, New Delhi - 110 018 (INDIA)
 Phone: +91-11-26533349 Fax: +91-11-26533435 Mobile: +91-9810558894
 Email: productenquiries@connecthouse.com, MSH@productenquiries@synergytel.com
 PRINCIPAL SITE: <http://www.synergytel.com> Skype Account: [productenquiries](https://www.skype.com)
 My trademark register ID: [synergytel.com](http://www.synergytel.com) www.connecthouse.com